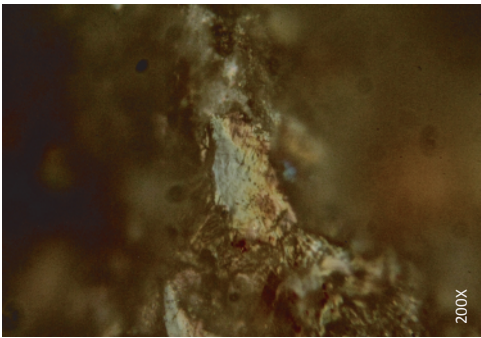


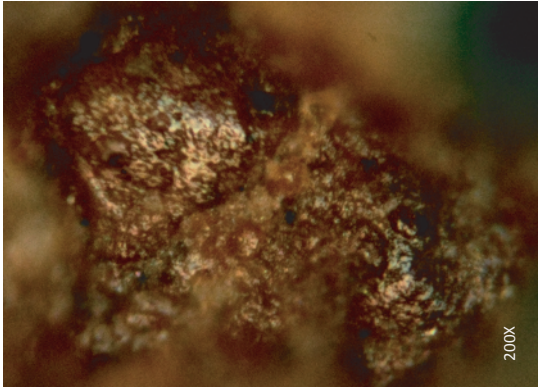
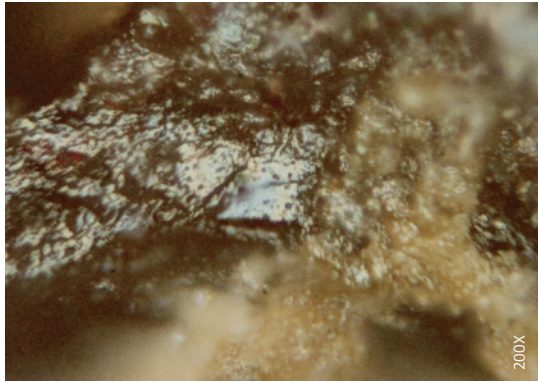
1. Aroeira 2014 - 237



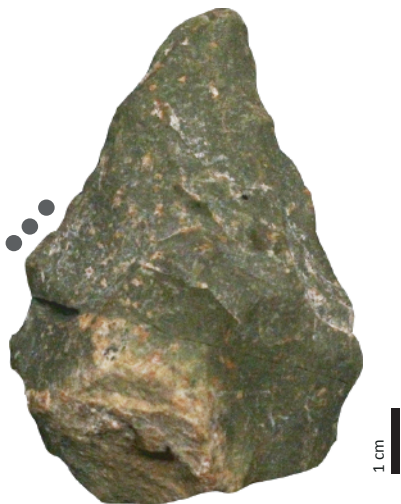
2. Aroeira 2015 - 771

Supplementary Figure 1: Evidence of wood polish resulting from percussion motion (1,2) visible on the epoxy resin casts of the tool edges (1) ; Macroscopic detail of the active edge (2, right).

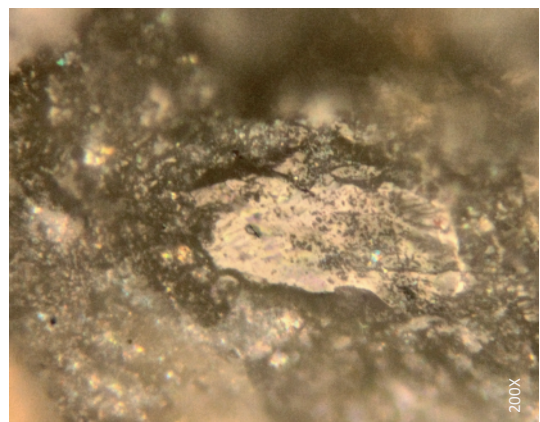
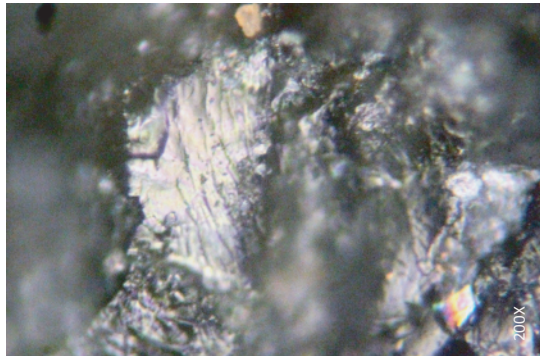
Figure supplémentaire 1: Polis de bois végétal résultant d'un travail de percussion (1, 2) visible sur une réplique du tranchant en résine époxy (1) ; Détail macroscopique du bord utilisé.



1. Aroeira 10

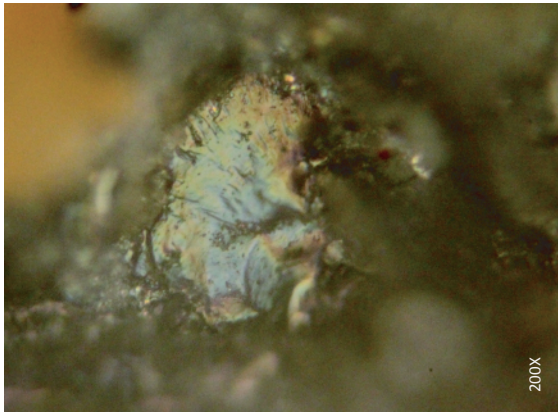


2. Aroeira 2014 - 405

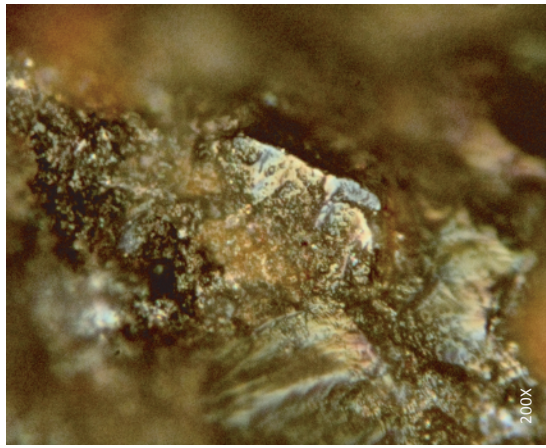
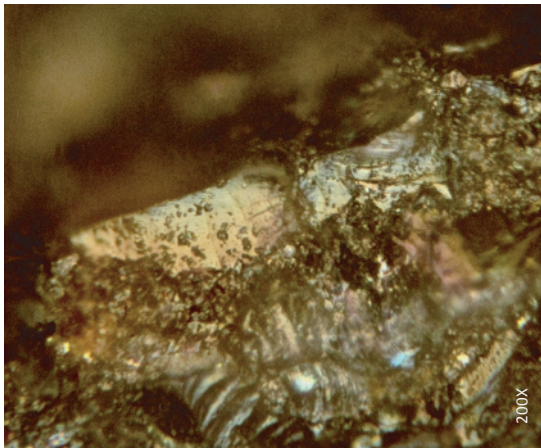


Supplementary Figure 2: Bifaces with evidence of wood sawing (1,2).

Figure supplémentaire 2: Bifaces portant des traces de sciage de bois végétal (1,2).



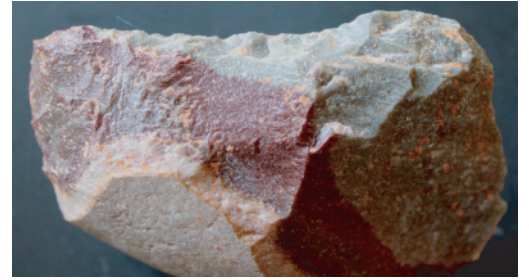
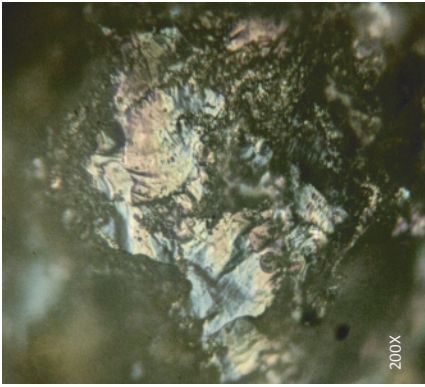
1. Aroeira 536



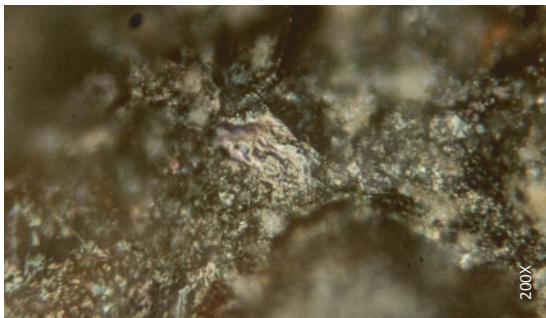
2. Aroeira 482

Supplementary Figure 3: Bifaces with use-wear from hard materials undetermined working motion (1, 2).

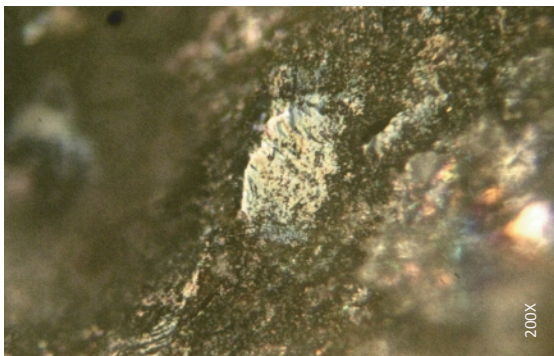
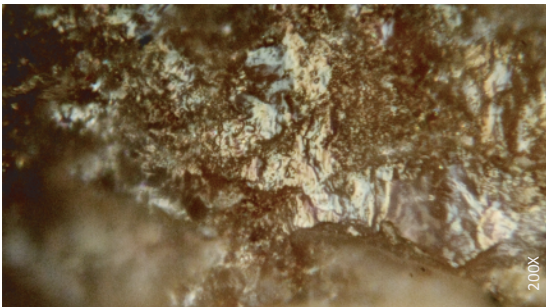
Figure supplémentaire 3: Bifaces avec des traces de travail sur des matériaux durs, dont le geste effectué reste indéterminé (1, 2).



1. Aroeira 2014 - 464



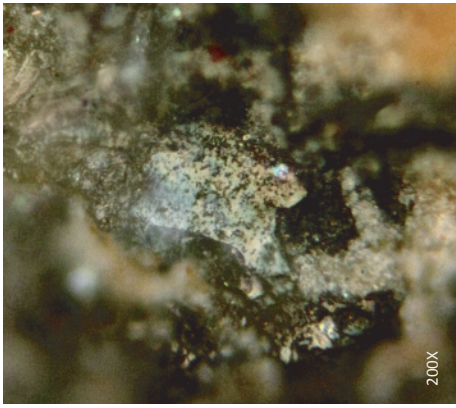
2. Aroeira 2013 - 51



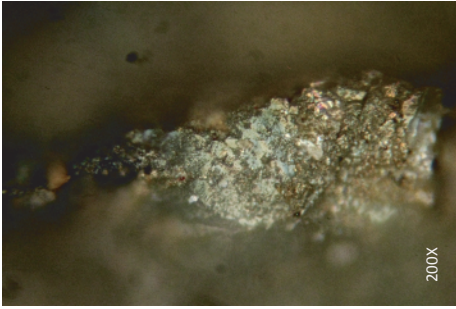
3. Aroeira 2014 - 602

Supplementary Figure 4: Flake used to saw wood (1). Detail of the numerous scars located on both sides of the active edge (1, right) ; Evidence of wood scraping on flake (2) ; Flake with polishes from wood undetermined working motion (3).

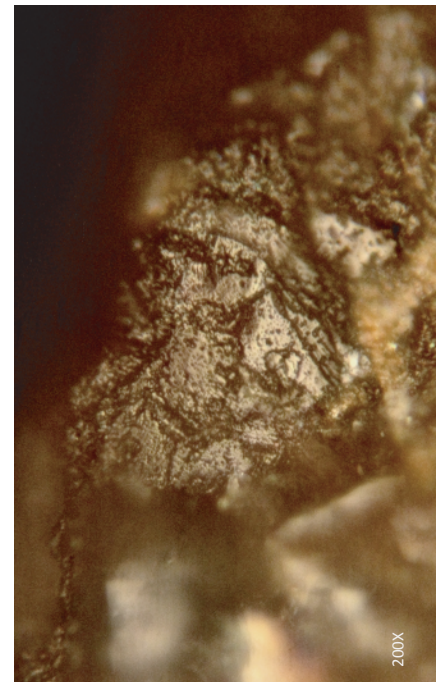
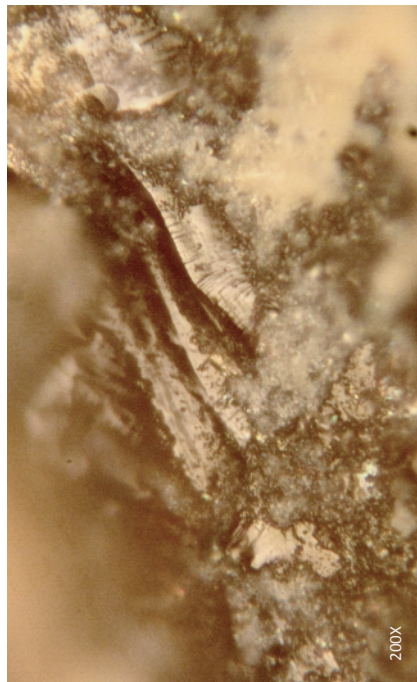
Figure supplémentaire 4: Eclat utilisée pour scier du bois végétal (1). Détail de nombreuses enlèvements sur les deux faces du tranchant utilisé (1, droite) ; Traces de grattage de bois végétal sur éclat (2) ; Eclat avec des polishes du travail de bois végétal selon une cinématique de travail indéterminée (3).



1. Aroeira 2014 - 485

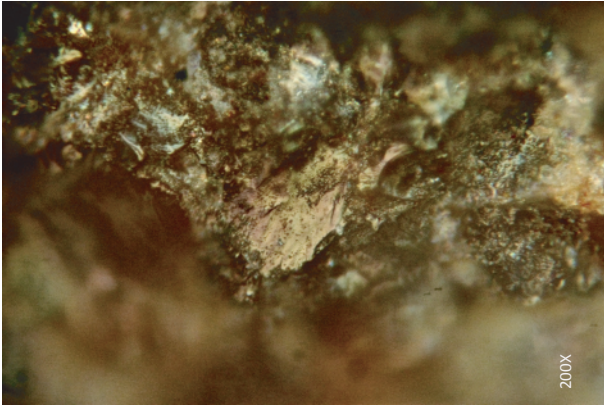


2. Aroeira 2014 - 392

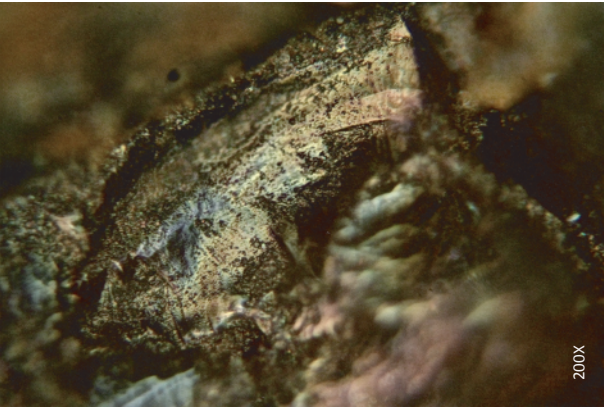


Supplementary Figure 5: Flakes showing polishes associated with numerous scars on both sides of the active edges, indicating cutting motions on hard materials (1, 2).

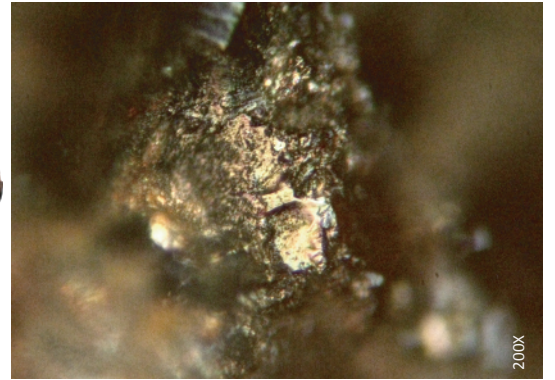
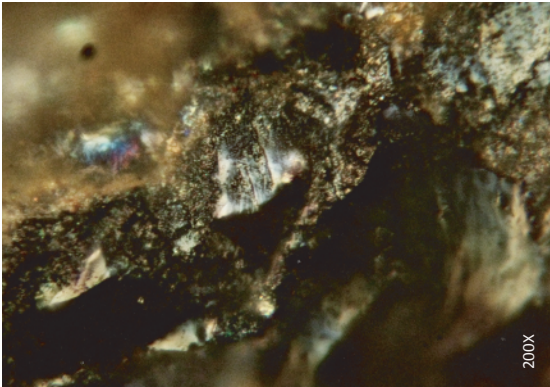
Figure supplémentaire 5: Eclats portant des poliss associées à de nombreux enlèvements sur les deux faces des tranchants utilisés, témoignant d'un travail de découpe sur des matériaux durs (1, 2).



1. Aroeira 2014 - 458



2. Aroeira 2013 - 16



3. Aroeira 2013 - 84

Supplementary Figure 6: Flakes used to scrape wood (1,2) ; Core with evidence of use-wear resulting from wood scraping (3).

Figure supplémentaire 6: Eclats utilisées pour gratter du bois vegetal (1,2) ; nucleus avec des traces de grattage de bois vegetal (3).