

Micronutilus n. gen., a new dwarf Bathonian
(Middle Jurassic) nautilid from Western France

Patrick BRANGER



DIRECTEURS DE LA PUBLICATION / PUBLICATION DIRECTORS :
Bruno David, Président du Muséum national d'Histoire naturelle
Étienne Ghys, Secrétaire perpétuel de l'Académie des sciences

RÉDACTEURS EN CHEF / EDITORS-IN-CHIEF: Michel Laurin (CNRS), Philippe Taquet (Académie des sciences)

ASSISTANTE DE RÉDACTION / ASSISTANT EDITOR: Adenise Lopes (Académie des sciences; cr-palevol@academie-sciences.fr)

MISE EN PAGE / PAGE LAYOUT: Audrina Neveu (Muséum national d'Histoire naturelle; audrina.neveu@mnhn.fr)

RÉVISIONS LINGUISTIQUES DES TEXTES ANGLAIS / ENGLISH LANGUAGE REVISIONS: Kevin Padian (University of California at Berkeley)

RÉDACTEURS ASSOCIÉS / ASSOCIATE EDITORS (*, *took charge of the editorial process of the article/a pris en charge le suivi éditorial de l'article*):

Micropaléontologie/*Micropalaeontology*

Lorenzo Consorti (Institute of Marine Sciences, Italian National Research Council, Trieste)

Paléobotanique/*Palaeobotany*

Cyrille Prestianni (Royal Belgian Institute of Natural Sciences, Brussels)

Métazoaires/*Metazoa*

Annalisa Ferretti* (Università di Modena e Reggio Emilia, Modena)

Paléochthyologie/*Palaeoichthyology*

Philippe Janvier (Muséum national d'Histoire naturelle, Académie des sciences, Paris)

Amniotes du Mésozoïque/*Mesozoic amniotes*

Hans-Dieter Sues (Smithsonian National Museum of Natural History, Washington)

Tortues/*Turtles*

Walter Joyce (Universität Freiburg, Switzerland)

Lépidosauromorphes/*Lepidosauromorphs*

Hussam Zaher (Universidade de São Paulo)

Oiseaux/*Birds*

Eric Buffetaut (CNRS, École Normale Supérieure, Paris)

Paléomammalogie (mammifères de moyenne et grande taille)/*Palaeomammalogy (large and mid-sized mammals)*

Lorenzo Rook (Università degli Studi di Firenze, Firenze)

Paléomammalogie (petits mammifères sauf Euarchontoglires)/*Palaeomammalogy (small mammals except for Euarchontoglires)*

Robert Asher (Cambridge University, Cambridge)

Paléomammalogie (Euarchontoglires)/*Palaeomammalogy (Euarchontoglires)*

K. Christopher Beard (University of Kansas, Lawrence)

Paléoanthropologie/*Palaeoanthropology*

Aurélien Mounier (CNRS/Muséum national d'Histoire naturelle, Paris)

Archéologie préhistorique (Paléolithique et Mésolithique)/*Prehistoric archaeology (Palaeolithic and Mesolithic)*

Nicolas Teyssandier (CNRS/Université de Toulouse, Toulouse)

Archéologie préhistorique (Néolithique et âge du bronze)/*Prehistoric archaeology (Neolithic and Bronze Age)*

Marc Vander Linden (Bournemouth University, Bournemouth)

RÉFÉRÉS / REVIEWERS: <https://sciencepress.mnhn.fr/fr/periodiques/comptes-rendus-palevol/referes-du-journal>

COUVERTURE / COVER:

Micronautilus evolutus n. gen., n. sp.

Comptes Rendus Palevol est indexé dans / *Comptes Rendus Palevol is indexed by:*

- Cambridge Scientific Abstracts
- Current Contents® Physical
- Chemical, and Earth Sciences®
- ISI Alerting Services®
- Geoabstracts, Geobase, Georef, Inspec, Pascal
- Science Citation Index®, Science Citation Index Expanded®
- Scopus®.

Les articles ainsi que les nouveautés nomenclaturales publiés dans *Comptes Rendus Palevol* sont référencés par / *Articles and nomenclatural novelties published in Comptes Rendus Palevol are registered on:*

- ZooBank® (<http://zoobank.org>)

Comptes Rendus Palevol est une revue en flux continu publiée par les Publications scientifiques du Muséum, Paris et l'Académie des sciences, Paris
Comptes Rendus Palevol is a fast track journal published by the Museum Science Press, Paris and the Académie des sciences, Paris

Les Publications scientifiques du Muséum publient aussi / *The Museum Science Press also publish:*

Adansonia, Geodiversitas, Zoosystema, Anthropolozologica, European Journal of Taxonomy, Naturae, Cryptogamie sous-sections *Algologie, Bryologie, Mycologie*.

L'Académie des sciences publie aussi / *The Académie des sciences also publishes:*

Comptes Rendus Mathématique, Comptes Rendus Physique, Comptes Rendus Mécanique, Comptes Rendus Chimie, Comptes Rendus Géoscience, Comptes Rendus Biologies.

Diffusion – Publications scientifiques Muséum national d'Histoire naturelle

CP 41 – 57 rue Cuvier F-75231 Paris cedex 05 (France)

Tél. : 33 (0)1 40 79 48 05 / Fax: 33 (0)1 40 79 38 40

diff.pub@mnhn.fr / <https://sciencepress.mnhn.fr>

Académie des sciences, Institut de France, 23 quai de Conti, 75006 Paris.

© This article is licensed under the Creative Commons Attribution 4.0 International License (<https://creativecommons.org/licenses/by/4.0/>)
ISSN (imprimé / print): 1631-0683/ ISSN (électronique / electronic): 1777-571X

Micronautilus n. gen., a new dwarf Bathonian (Middle Jurassic) nautilid from Western France

Patrick BRANGER

4 rue Franche, F-79410 Cherveux (France)
patrick.branger@wanadoo.fr

Submitted on 30 October 2019 | Accepted on 5 August 2022 | Published on 4 July 2023

urn:lsid:zoobank.org:pub:B2995358-3451-4662-9C7E-FDF4A51838A7

Branger P. 2023. — *Micronautilus* n. gen., a new dwarf Bathonian (Middle Jurassic) nautilid from Western France. *Comptes Rendus Palevol* 22 (22): 479–490. <https://doi.org/10.5852/cr-palevol2023v22a22>

ABSTRACT

The new genus *Micronautilus* n. gen. (type species *Micronautilus evolutus* n. gen., n. sp.) is described and assigned to the family Paracenoceratidae Spath, 1927. Known from only two species with a very small shell, this taxon is regarded to represent a natural lineage within the family. As currently known, the occurrence of *Micronautilus* n. gen. is limited to the Bathonian of Western France, extending from the Zigzag Zone to the Retrocostatum Zone. The origin of *Micronautilus* n. gen. is likely to lie in the upper Bajocian group of nautilids assigned to '*Cenoceras fuscum* (Crick, 1898). Paleoenvironmental data suggest that the dwarfism of this new taxon cannot be interpreted as a consequence of an isolated population or any specific environmental conditions.

RÉSUMÉ

Micronautilus n. gen., un nouveau genre de nautilidé nain dans le Bathonien (Jurassique moyen) du Poitou. Un nouveau genre de nautilite, *Micronautilus* n. gen. (espèce type *Micronautilus evolutus* n. gen., n. sp.) est décrit et rattaché à la famille des Paracenoceratidae Spath, 1927. Actuellement représenté par deux espèces de très petite taille, ce taxon est considéré comme une lignée bien individualisée au sein de la famille. Dans l'état actuel des connaissances, *Micronautilus* n. gen. semble confiné au Bathonien de l'ouest de la France, depuis la Zone à Zigzag jusqu'à la Zone à Retrocostatum. L'origine de *Micronautilus* n. gen. se trouve probablement au sein du groupe de nautilites du Bajocien supérieur assigné à '*Cenoceras fuscum* (Crick, 1898). Les données paléo-environnementales suggèrent que le nanisme de ce nouveau genre ne peut pas être interprété comme la conséquence d'une population isolée ni de conditions environnementales particulières.

KEY WORDS

Cephalopods,
Nautilida,
Jurassic,
Bathonian,
biostratigraphy,
dwarfism,
new genus,
new species.

MOTS CLÉS

Céphalopodes,
Nautilida,
Jurassique,
Bathonien,
biostratigraphie,
nanisme,
genre nouveau,
espèces nouvelles.

INTRODUCTION

During more than three decades of investigation of Jurassic strata in Western France (ranging mainly through Aalenian to Oxfordian stages), I collected hundreds of nautilids belonging to several well-known genera including *Cenoceras* (*sensu lato*) Hyatt, 1884, *Digoniceras* Hyatt, 1894 and *Paracenoceras* Spath, 1927. Closer examination of this material has already led to the designation of a new genus, *Pictonautilus* (Branger, 2004) and ongoing studies clearly show that several other new species, especially from the *Pseudaganides* group, are also present. Within the middle-upper Bathonian material, in addition to medium- to large-sized nautilids, it has been possible to recognize a distinct group of small nautilid conchs that exhibit adult shell characteristics. One of these unusual forms represents the smallest Jurassic nautilids yet described and is assigned here to *Micronautilus* n. gen.

MATERIAL AND METHOD

For more than thirty years, I visited many quarries and temporary road work sections throughout the well-known Jurassic strata in Western France. Fossils described in this paper have been collected within an accurate biochronological chart based on ammonites from the Submediterranean Realm (Cariou & Hantzpergue *in* GFEJ 1997). One locality in particular, Buffevent quarry (46°20'28"N, 0°30'21"W), was investigated in close detail (Branger 2009) and provided most of the specimens for this study (Figs 1; 2 below). Other localities are Saint-Maixent-l'École (46°25'37"N, 0°12'28"W); les Hauts-de-Rochefort quarry at Sainte-Éanne (46°23'30"N, 0°07'55"W) (Branger 1989); Trottebuie (46°25'37"N, 0°12'28"W) (Énay *et al.* 2012); Saint-Gelais (46°22'54"N, 0°22'37"W), les Lucs near Échiré (46°21'30"N, 0°25'36"W); Souché (46°19'10"N, 0°25'05"W) and Jard-sur-Mer (46°25'08"N, 1°38'21"W). The measurements of nautilid conchs employed here follow those of Tintant (1984a), namely: shell diameter (D), whorl height (H), whorl width (W) and width of the umbilical area (U). In addition, the depth (P) and the width (L) of the lateral lobe of the suture lines have also been estimated. Different ratios have also been used to compare the fossils: $h = H/D$; $w = W/D$; $u = U/D$.

Some shells have been identified as adults. This assertion is based by comparison with mature modifications seen in shells of recent nautilids already described by Collins & Ward (1987) and summarized by Klug (2004). The most evident feature is the septal crowding at the end of the phragmocone but we can also notice the change in coiling with reduction of relative whorl height accompanied by a more rounded venter.

All the material is from P. Branger's collection and is stored at the Musée Bernard d'Agesci in Niort (France).

ABBREVIATIONS

Measurements

D	shell diameter;
H	whorl height;

L	width;
P	depth;
U	width of the umbilical area;
W	whorl width.

Ratio

h	H/D;
u	U/D;
w	W/D.

SYSTEMATIC PALAEOLOGY

Class CEPHALOPODA Cuvier, 1795
 Subclass NAUTILIA Wade, 1988
 Order NAUTILIDA Agassiz, 1847
 Superfamily NAUTILOIDEA de Blainville, 1825
 Family PARACENOCERATIDAE Spath, 1927

Genus *Micronautilus* n. gen.

[urn:lsid:zoobank.org:act:1FE1AAB7-B83C-4526-8885-FE2F881A91F5](https://doi.org/10.1017/S0022278X23000115)

DIAGNOSIS. — Small sized adult nautilids (less than 60 mm in diameter) with a generally compressed shell showing a quite deep and narrow hyponomic sinus. The whorl section may be oval on the phragmocone, becoming subrectangular to subquadrate, depending on the species, rarely depressed at adult stage. The umbilicus is open with an umbilical area up to 20% of shell diameter, boarded by a subvertical wall. Septa are relatively close, mostly on the type-species; sutures always exhibit a shallow lateral lobe (Fig. 3A-C).

TYPE SPECIES. — *Micronautilus evolutus* n. sp. (Figs 1-5; Appendix 1).

COMPOSITION OF THE GENUS. — *Micronautilus evolutus* n. gen., n. sp. (type) and *Micronautilus minoti* n. gen., n. sp.

ETYMOLOGY. — The generic name *Micronautilus* refers to the very small diameter of these nautilid shells.

REMARKS

On account of its small size and unique shell shape, *Micronautilus* n. gen. cannot be mistaken with any other contemporaneous Jurassic nautilids and its taxonomic validity is unquestionable. At the same stratigraphic level, two other nautilid genera exhibit a compressed shell form: the earliest representatives of *Pseudaganides* Spath, 1927 (Figs 1-3; Appendix 2A) and *Pictonautilus* (Figs 1-3; Appendix 2B). However, both these genera are typically slightly larger than *Micronautilus* n. gen., moreover *Pseudaganides* exhibits a closed umbilicus ($U/D = 0$). Furthermore, as the suture lines of *Pseudaganides* are much more sinuous than *Micronautilus* n. gen. (Fig. 3E), these two taxa are not considered here to be closely related. *Micronautilus* n. gen. resembles *Pictonautilus* with regard to its shallow, weakly sinuous sutures (Fig. 3D). The angular margins of some *Micronautilus* n. gen. shells are also reminiscent of *Pictonautilus* but the latter exhibits sharp ventral edges. Coeval *Pictonautilus* displays an occluded umbilicus and its inner whorls remain rounded in section. *Pictonautilus clavifer* (Tintant, 1994), of early Bathonian age possesses a relatively stout, small-sized shell and an open umbilicus.

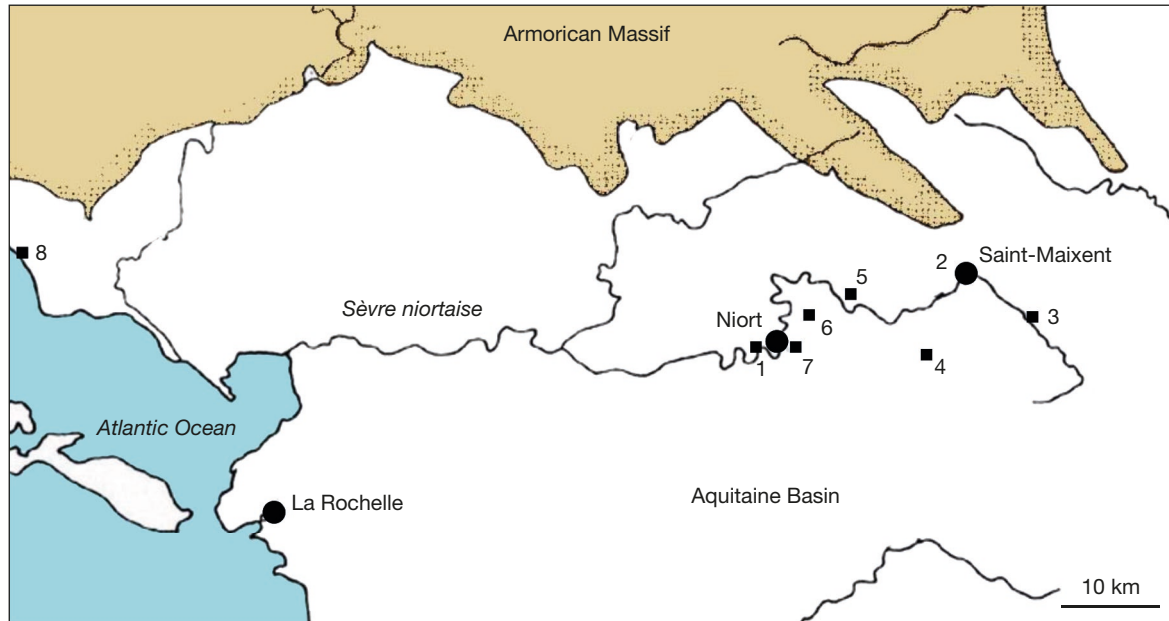


FIG. 1. — Geographical map reporting the position of the localities that provided specimens of *Micronautilus* n. gen. Numbers: 1, Buffevent; 2, Saint-Maixent-l'École; 3, Sainte-Éanne; 4, Trottebuie; 5, Saint-Gelais; 6, les Lucs; 7, Souché; 8, Jard-sur-Mer.

TABLE 1. — Measurements in millimetres for the shells of *Micronautilus evolutus* n. gen., n. sp.

No.	D	H	h	W	w	U	u	W/H	P	L	%
2021.BR.N.103 (holotype)	44	22	0.5	20	0.45	8.6	0.19	0.9	–	–	–
	42	21	0.5	20	0.47	7.7	0.17	0.95	3	12.5	24
	41	–	–	–	–	7.2	0.16	–	–	–	–
	38	–	–	–	–	6.28	0.16	–	–	–	–
	35	–	–	–	–	5.8	0.16	–	–	–	–
	33	–	–	–	–	5.3	0.14	–	–	–	–
	30	15.5	0.51	13.5	0.45	4.5	0.15	0.87	–	–	–
2021.BR.N.066	39	–	–	–	–	7.3	–	–	–	–	–
	38	19	0.5	18	0.47	6.3	0.19	0.94	2.5	12	20
	30	15	0.5	14	0.46	5.8	0.17	0.93	–	–	–
2021.BR.N.091	38	19	0.5	19	0.5	7.4	0.19	1	3	17	17.6
	31	16	0.51	15	0.48	6	0.19	0.93	–	–	–
2021.BR.N.135	38	18	0.47	17	0.44	5.5	0.14	0.94	1.5	13	11.5
	28	16	0.57	14	0.5	4	0.14	0.87	–	–	–
	27	14	0.51	13	0.49	–	–	0.92	–	–	–
2021.BR.N.136	44	21	0.47	19	0.43	9	0.2	0.9	–	–	–
	39	18	0.46	17.5	0.45	8	0.2	0.97	–	–	–
2021.BR.N.137	28	15	0.53	12	0.42	5	0.18	0.8	–	–	–
2021.BR.N.138	29	15	0.51	14	0.48	4	0.13	0.93	2	10	20
2021.BR.N.139	33	18	0.54	15.5	0.47	4	0.12	0.8	–	–	–

This taxon may be close to an ancestral form of *Micronautilus* n. gen. that originated during Bajocian time through dwarf species like ‘*Cenoceras fuscum*’ (Crick, 1898).

The important intraspecific variation in shell size of modern *Nautilus* Linnaeus, 1758 is well known and, despite of these differences, some of them are considered a single species (Saunders *et al.* 2017; Tajika *et al.* 2018). Nowadays the size variations seem to be linked to the geographical distribution

of these animals. The fossils described within the present study are all coming from a restricted area, consequently such an intraspecific diversity is doubtful for this material. Moreover, the features of shells are unlike of coeval species and nowhere in the world any similar species have ever been described.

According to the recent classification chart for post-Triassic Nautilida (King *et al.* 2016), *Micronautilus* n. gen. would logically be included within the family Paracenoceatidae.

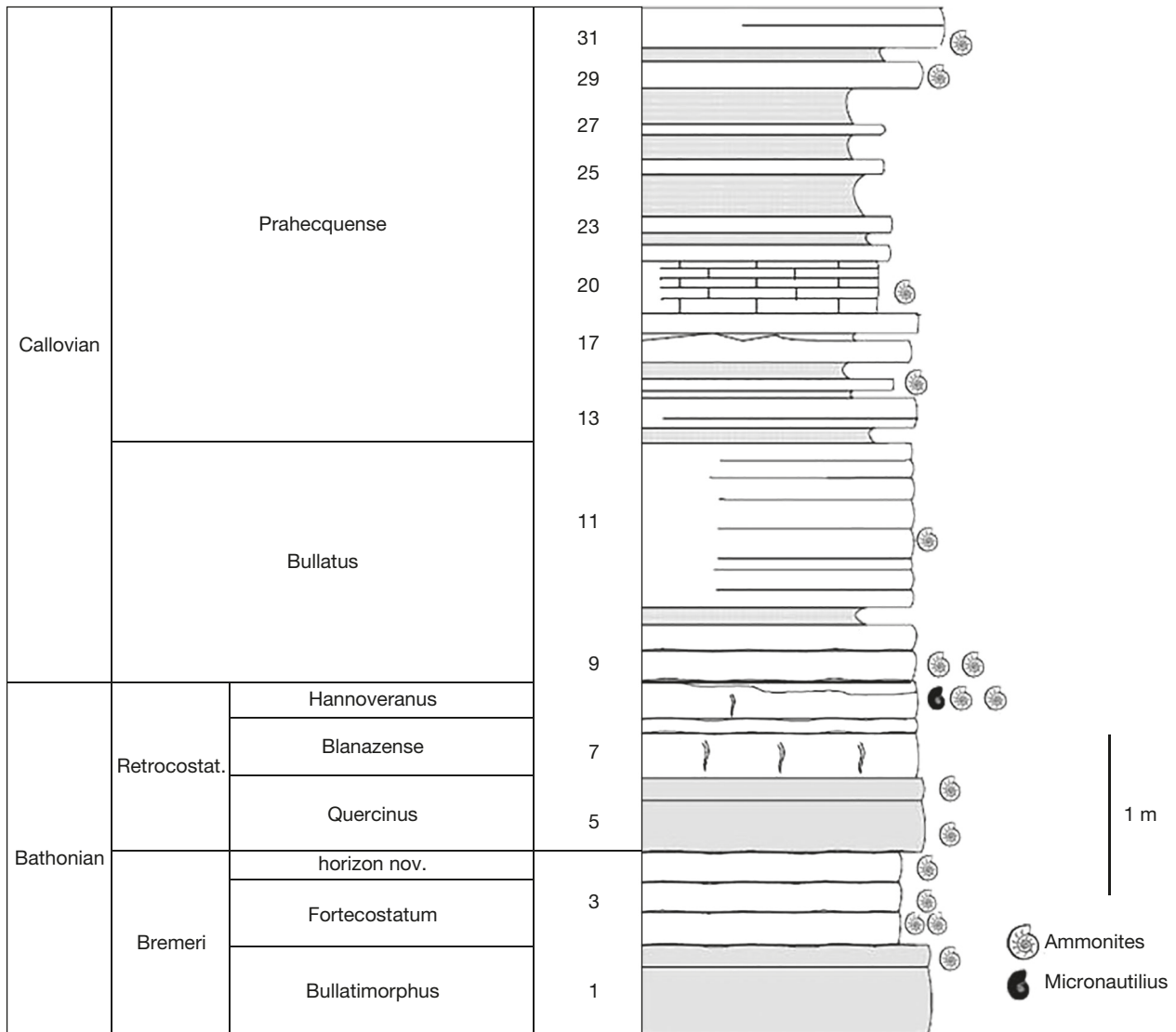


FIG. 2. — Stratigraphic section at Buffevent quarry from Branger (2009).

OCCURRENCE

Micronautilus n. gen. is only currently known from Bathonian limestones in Western France and ranges from the lower Bathonian Zigzag Zone to the upper Bathonian, Retrocostatum Zone.

Micronautilus evolutus n. gen., n. sp.
(Figs 1-5; Appendix 1A-E)

[urn:lsid:zoobank.org:act:FA6CB531-2520-41D7-B6B9-758B95FB3984](https://zoobank.org/act:FA6CB531-2520-41D7-B6B9-758B95FB3984)

?*Pictonautilus verciacensis* (Lissajous) – Branger 2004: 143, pl. 1, fig. 3.

Pictonautilus sp.? – Grulke 2016: 141.

DIAGNOSIS. — Small sized nautilid (less than 45 mm in diameter) with a compressed and subrectangular section of the shell. The umbilical area is always open and quite wide, up to 20% of shell

diameter. Septa are relatively closely spaced and sutures exhibit a shallow lateral lobe.

TYPE MATERIAL. — Holotype N103 from Buffevent quarry, Niort, Deux-Sèvres, France. It is figured in Fig. 1; Appendix 1A. Eight paratype specimens (figured in Fig. 2; Appendix 1B-E) obtained from several localities (Fig. 1) have also been studied: 2021.BR.N.091, 2021.BR.N.103, 2021.BR.N.136, 2021.BR.N.137, 2021.BR.N.138 are from Buffevent quarry near Niort, 2021.BR.N.139 is from Jard-sur-Mer (Vendée) and 2021.BR.N.066 from Saint-Maixent-l'École.

TYPE LOCALITY AND STRATUM TYPICUM. — *Micronautilus evolutus* n. gen., n. sp. is relatively common at the top of the Calcaire à silex formation (Welsch 1903) of late Bathonian (Retrocostatum Zone) age in Western France, especially in the vicinity of Niort. The taxon has not yet been described from any other area.

MEASUREMENTS. — see Table 1.

ETYMOLOGY. — The specific name *evolutus* relates to the relatively wide umbilicus of the shell.

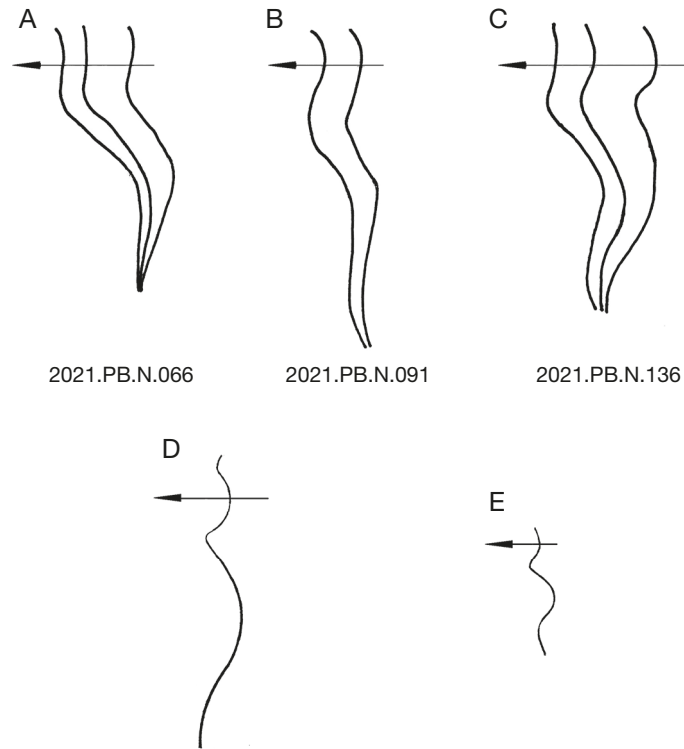


FIG. 3. — Suture lines of *Micronautilus evolutus* n. gen., n. sp. at the end of the phragmocone compared with *Pictonautilus* Branger, 2004 and *Pseudaganides* Spath, 1927: **A-C**, *Micronautilus evolutus* n. gen., n. sp.; **D**, *Pictonautilus verciacensis* (Lissajous, 1923), middle Bathonian, Bremeri Zone, Saint-Maixent-l'École (Deux-Sèvres); **E**, *Pseudaganides* n. sp. upper Bathonian, Retrocostatum Zone, Aiffres, Deux-Sèvres.

DESCRIPTION

Micronautilus evolutus n. gen., n. sp. is a very distinctive species characterized by a very small size at adult stage, ranging from 30 mm (estimated diameter) for 2021.BR.N.138 (Fig. 3A-C; Appendix 1C) up to 44 mm in 2021.BR.N.136 (Fig. 5A, B; Appendix 1E). The individuals are relatively evolute for Jurassic nautilids. The umbilicus is widely open since U/D can reach 20% of the diameter on full grown shells. At the very beginning of the embryonic shell, the whorl section is rounded and, until a diameter of about 1 cm is reached, the shell displays reticulate ornamentation. This diameter seems to be approximately the hatching size of the animal according to the weak depression, corresponding to the nepionic constriction, observed on inner whorls of the holotype (2021.BR.N.103). Further adoral, the whorl section becomes sub-rectangular to sub-trapezoidal, compressed with a maximum width located close to the umbilicus. Flanks are flat, sub-parallel, boarded by angular but never sharp ventral edges; the wall of the umbilicus is sub-vertical. The venter is very slightly rounded on the inner whorls and flattens before the beginning of the body chamber, tending to be a little concave on stratigraphically younger specimens. The shell is narrowly camerate, with twelve to thirteen chambers occurring in each half of a whorl when adult. The suture lines are partly hidden on the holotype (2021.BR.N.103) but, on the paratypes, exhibit wide and shallow lateral and ventral lobes (Fig. 3). The hyponomic sinus of the shell is quite deep and narrow. The position of the siphuncle has not been observed.

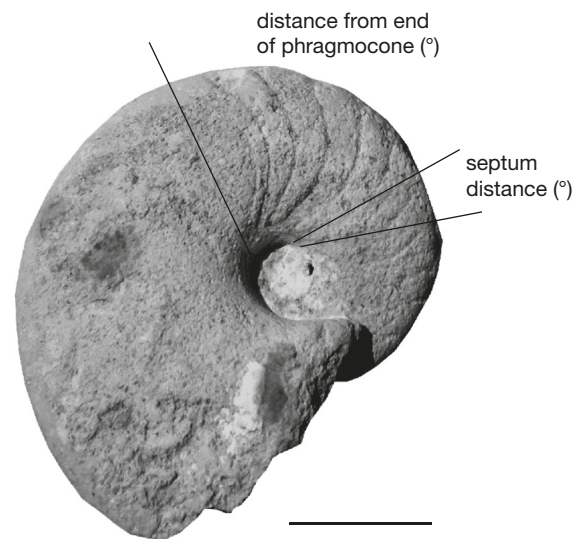


FIG. 4. — Measurement of the septal spacing in the studied *Micronautilus* n. gen. Scale bar: 1 cm.

REMARKS

As discussed above, apart from the two specimens figured under the name of ?*Pictonautilus verciacensis* (Branger, 2004) and *Pictonautilus* sp. (Grulke 2016: 141), *Micronautilus evolutus* n. gen., n. sp. has not previously been illustrated. At the same stratigraphic level, the closest small sized nautilid with a compressed shell belongs to the earliest representatives of *Pseudaganides* (ongoing studies from personal data).

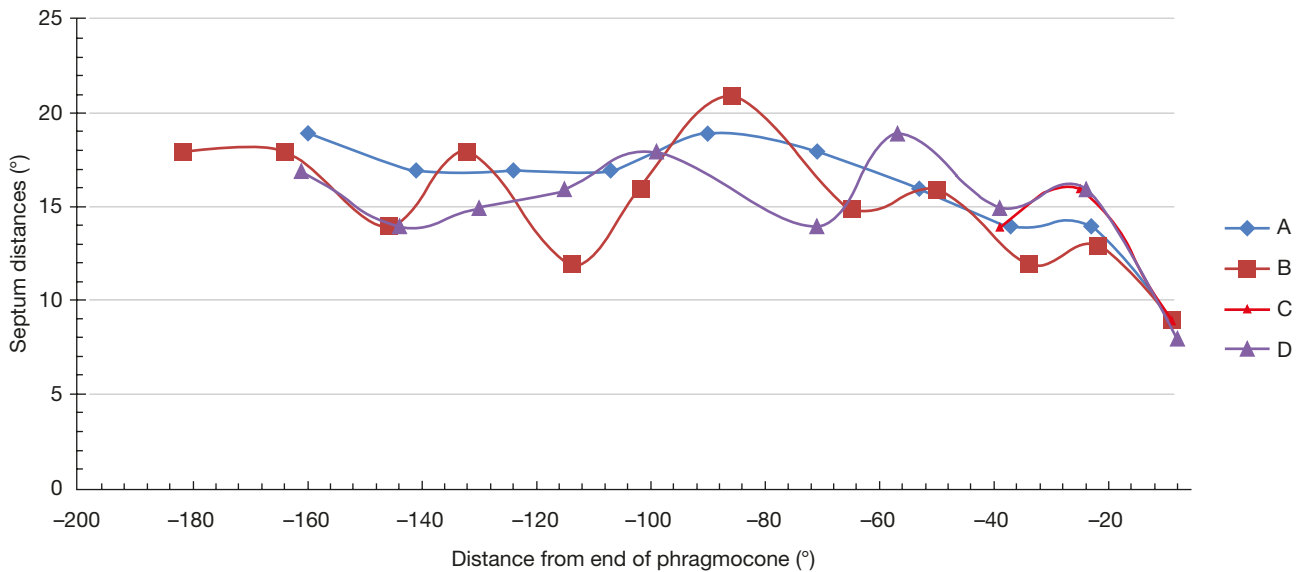


FIG. 5. — Septum distances of *Micronautilus evolutus* n. gen., n. sp.: **A**, 2021.BR.N.066; **B**, 2021.BR.N.091; **C**, 2021.BR.N.136; **D**, 2021.BR.N.138.

This genus is not considered here to be closely related due to its closed umbilicus and suture lines that are much more sinuous than *Micronautilus* n. gen.

Despite of their small size, the specimens of *M. evolutus* n. gen., n. sp. are regarded as mature shells because of two reasons. The first one is related to the crowding of the last septum at the end of the phragmocone. The septal spacing has been measured on four specimens, 2021.BR.N.066, 2021.BR.N.091, 2021.BR.N.136 and 2021.BR.N.138 (Figs 4; 5) according the method used by Kraft *et al.* (2008). As inner whorls are small and hidden by overlapping whorls, they cannot be observed clearly and the measurements have been only done from 180° to 20° before the last septum. All of them show an angular distance that varies from 12 to 20° (Fig. 4). The two last one are approximated like on the modern nautilus, the angular distance falls under 10°. The second indication of maturity is shown by the increase in the relative umbilical width close to adulthood size when U/D reaches 20% on the largest specimens (Table 1; Fig. 6).

Micronautilus minoti n. gen., n. sp.
(Figs 1-4; 7; Appendices 1F; 3A-D)

[urn:lsid:zoobank.org:act:106A89E8-AF1A-459D-9847-F18DC295B3D9](https://www.zoobank.org/act:106A89E8-AF1A-459D-9847-F18DC295B3D9)

DIAGNOSIS. — Small sized and rather compressed *Micronautilus* n. gen. with a maximum diameter reaching 60 mm. Shell section is oval on inner whorls becoming subrectangular to subquadrate on full grown individuals. Umbilicus is always open. Septa show a broad and shallow lateral lobe and a ventral lobe.

TYPE MATERIAL. — All the samples have been collected within the southern part of the Deux-Sèvres department (Fig. 1). Holotype 2021.BR.N.150 is from les Lucs (46°21'27"N, 0°25'31"W), temporary exposure near Échiré, it is figured in Fig. 1; Appendix 3A. Eight paratypes were sampled from various localities. 2021.BR.N.042 (Fig. 4; Appendix 3D), 2021.BR.N.152 (Fig. 2; Appendix 3B)

and 2021.BR.N.153 are from the old Trotte-Buie quarry, Mougou commune, 2021.BR.N.095 (Fig. 3A-C; Appendix 3C) was found in Souché (temporary roadworks near Niort), 2021.BR.N.135 (Fig. 6; Appendix 1F) and 2021.BR.N.151 come from les Hauts-de-Rochefort (Sainte-Éanne quarry), 2021.BR.N.155 is from Saint-Gelais.

TYPE LOCALITY AND STRATUM TYPICUM. — Most of the specimens have been collected from the “Banc pourri” (Welsch 1903), a stratigraphic level that extends all along the northern border of the Aquitaine basin. This level has yielded many ammonites, all of them have been reported from the lower Bathonian, Zigzag Zone (Sauvaget 1906; Énay *et al.* 2012). A single example, 2021.BR.N.135, a little younger, middle Bathonian, Progracilis Zone, is assigned to the same species.

MEASUREMENTS. — See Table 2.

ETYMOLOGY. — The specific name *minoti* is dedicated to Jean-Michel Minot, an amateur paleontologist who published the first exhaustive monograph on brachiopods from Western France (Minot & Branger 2007) and collected some interesting nautilids.

DESCRIPTION

Small sized nautilus, maximum diameter observed is about 60 mm. The section of the shell is compressed, oval on the phragmocone. It widens on the body chamber where the width can exceed slightly the height (W/H = 1.06 on 2021.BR.N.095), getting rectangular, sometimes quadrate. Venter is rounded on the inner whorls but flattens as the animal becomes adult. The umbilicus is always open (U/D = 0.15) but narrower than on *Micronautilus evolutus* n. gen., n. sp. with an umbilical wall that is subvertical at any stage. The suture line shows a broad and shallow lateral lobe whereas the ventral lobe is faint but clearly visible, at least from a diameter of 15 mm. Each half of a whorl shows nine chambers.

REMARK

Micronautilus minoti n. gen., n. sp. has not previously been figured and no former description corresponds to this new species. The shell of *Cenoceras fuscus* (Crick, 1898), upper

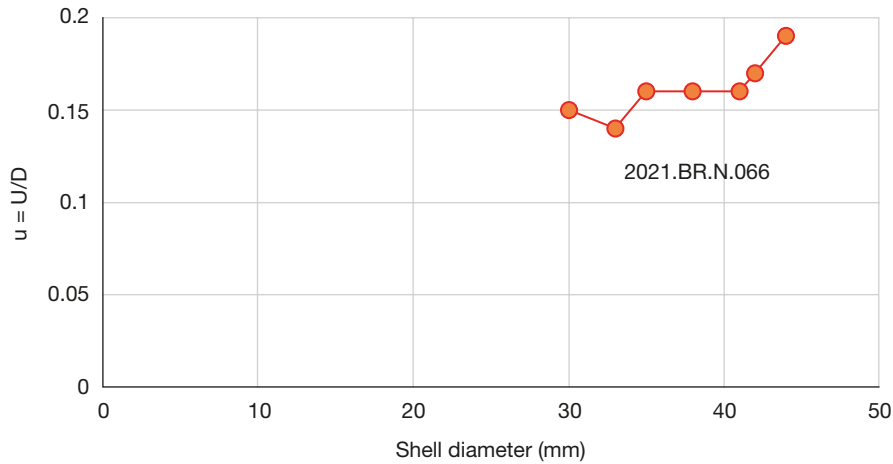


FIG. 6. — Ratio of the width of the umbilicus compared with the size of the shell of *Micronautilus evolutus* n. gen., n. sp. (2021.BR.N.066).

TABLE 2. — Measurements in millimetres for the shells of *Micronautilus minoti* n. gen., n. sp.

No.	D	H	h	W	w	U	u	W/H
2021.BR.N.042	37	21	0.56	16	0.43	5.4	0.14	0.76
	28.3	16	0.56	13.6	0.48	4	0.14	0.85
2021.BR.N.056	57	29.4	0.51	26	0.45	8	0.14	0.88
	46	25	0.54	26	0.56	4.8	0.1	1.04
	40	23	0.57	19.6	0.49	3	0.07	0.85
2021.BR.N.095	41	22	0.53	23.5	0.57	6.5	0.16	1.06
	31	17	0.54	15.5	0.5	4	0.13	0.91
2021.BR.N.150	45.5	24	0.52	#24	0.52	7.5	0.16	1
	34.5	20	0.57	#16	0.46	3.8	0.19	0.8
2021.BR.N.151	40	22	0.55	#10	0.25	6	0.15	0.5?
	18.4	16	—	#14	—	4	0.21	—
2021.BR.N.152	53	27	0.5	25	0.47	5	0.17	0.92
	30	16	0.53	15	0.5	3.8	0.12	0.93
	25	14	0.56	12.5	0.5	3.7	0.14	0.9
2021.BR.N.153	61	33	0.54	29	0.47	?5	0.08	0.87
2021.BR.N.155	54	28	0.51	27	0.5	9	0.16	0.96
	42	23	0.54	23	0.54	8	0.19	1
	37	19	0.51	17	0.45	6	0.16	0.89

Bajocian, is also rather small but larger than *Micronautilus minoti* n. gen., n. sp. with an open umbilicus. *Micronautilus evolutus* n. gen., n. sp. possesses a smaller, more compressed shell with a relatively wide umbilicus and more crowded septa. Moreover, its stratigraphical occurrence is younger, namely upper Bathonian. The final two septa in the adult shells of both species are typically approximated with an angular distance lower than 10° instead of 12° to 20° for previous ones.

DWARFISM

Dwarfism has been described from several Jurassic nautilids including *Paraceras parvulum* Tintant, 1984 and *Paraceras dorsoexcavatum* (Parona & Bonarelli, 1895) (Tintant 1984b). The description of the smallest taxon (*P. parvulum*)

was based on one complete specimen and two body chambers. According to Tintant, this species was adult with a shell diameter of about 30 mm. According to the plates presented in Tintant’s paper, the approximation of the two last septa does not clearly appear. *Paraceras parvulum* has only previously been recorded from Burgundy but is now known to occur at the same stratigraphic level (upper Callovian) in Western France (personal data of the author). These small sized specimens are a little larger than those described by Tintant; one example in the author’s collection shows feature of an adult specimen at a diameter of 55 mm. Another interesting dwarf species is ‘*Cenoceras fuscum*’ figured in Chirat (1997: pl. 5, fig. 5a-c), whose adult diameter is 48 mm.

Nevertheless, all these nautilids are larger at adult size than *Micronautilus evolutus* n. gen., n. sp. The origin of this unusual dwarfism among nautilids has already been discussed by Tintant (1984b). At the same stratigraphic levels, larger shells,

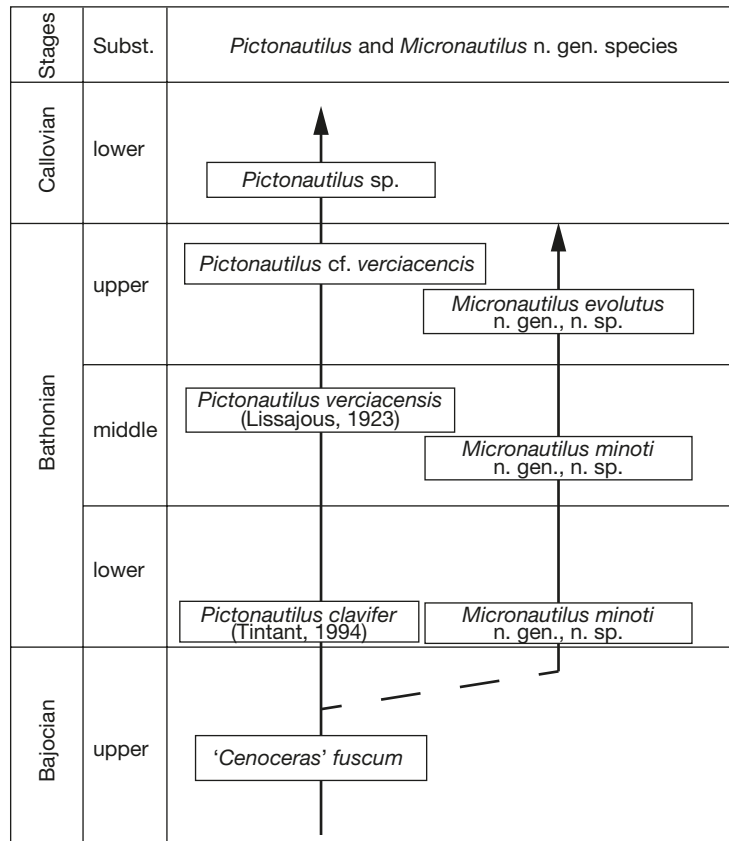


FIG. 7. — Origin and evolution of *Micronautilus* n. gen. and *Pictonautilus* (Branger, 2004) are likely to occur from the '*Cenoceras*' *fuscum* (Crick, 1898) group at the end of Bajocian.

up to diameter of 300 mm, are mixed with small to dwarf individuals. This is also true for the accompanying ammonite fauna and the benthic elements, bivalves and gastropods, that shows a mixing of larger and smaller individuals. As the limestone layers where the nautilids are preserved have been deposited within an open shelf environment, those populations were not isolated. Consequently, it seems impossible to explain this case of dwarfism as a result of a highly stressed environment, it has to be considered as a specific feature due to the evolution of an original lineage.

Another explanation which could be evoked would be a possible sexual dimorphism. This phenomenon has been proved by many authors in modern *Nautilus*. Willey (1902) was the first biologist who noticed that males are larger and have a broader aperture than females. More recent studies (Saunders & Spinosa 1978; Saunders *et al.* 2017) lead to the same conclusions. In comparison, the differences between *Micronautilus* n. gen. and other Bathonian nautiluses are disproportionate and cannot be the result of any sexual dimorphism.

ORIGIN AND EVOLUTION

As discussed above, dwarf nautiluses were already present during Bajocian times (Chirat 1997). *Micronautilus* n. gen. could have evolved from these forms through species like '*Cenoceras*' *fuscum*. All these shells show similarities: small

and compressed whorl section, subrectangular section whose venter is boarded by angular wedges. One lineage (Fig. 7) would be constituted by the following species: '*Cenoceras*' *fuscum*, upper Bajocian, *Pictonautilus clavifer* (Tintant), lower Bathonian, *Pictonautilus verciacensis* (Lissajous), middle and upper Bathonian, and *Pictonautilus* sp. (lower Callovian). In the proposed phylogeny, *Micronautilus* n. gen. could have evolved from '*Cenoceras*' *fuscum* at the very end of the Bajocian and would have disappeared before the beginning of the Callovian stage without any descendants.

CONCLUSIONS

Micronautilus n. gen. represents a newly described phyletic lineage within the family Paracenoceratidae. The shell of this new genus is characterized by its dwarfism, its rather wide umbilical area and a sub-rectangular to sub-quadrate cross section of the conch. The species *Micronautilus evolutus* n. gen., n. sp. represents the smallest Jurassic nautilid described to date and its adult diameter could be reached at 30 mm and never exceeds 44 mm. As currently known, the stratigraphical range of *Micronautilus* n. gen. is restricted to the Bathonian stage of Western France, it extends from the Zigzag Zone to the Retrocostatum Zone. The origin of *Micronautilus* n. gen. is likely to occur in the '*Cenoceras*' *fuscum* (Crick, 1898) group of nautilids of late Bajocian age. No descendant has been

recorded from Callovian or younger beds. Since the samples have been found associated with larger shells of nautilids as well as ammonites, the dwarfism of this new group cannot be interpreted as the consequence of an isolated population or adaptation to any special environment.

Acknowledgements

The author thanks Dr Andy King (Geckoella Ltd., United Kingdom) for initial comments on the manuscript and linguistic corrections. The manuscript also benefitted from the helpful comments of Prof. Marco Balini (Università degli Studi di Milano, Italy) and an anonymous referee. This research was supported by P. Branger's personal grants, he did not receive any specific grant from funding agencies in the public, commercial, or not-for-profit sectors.

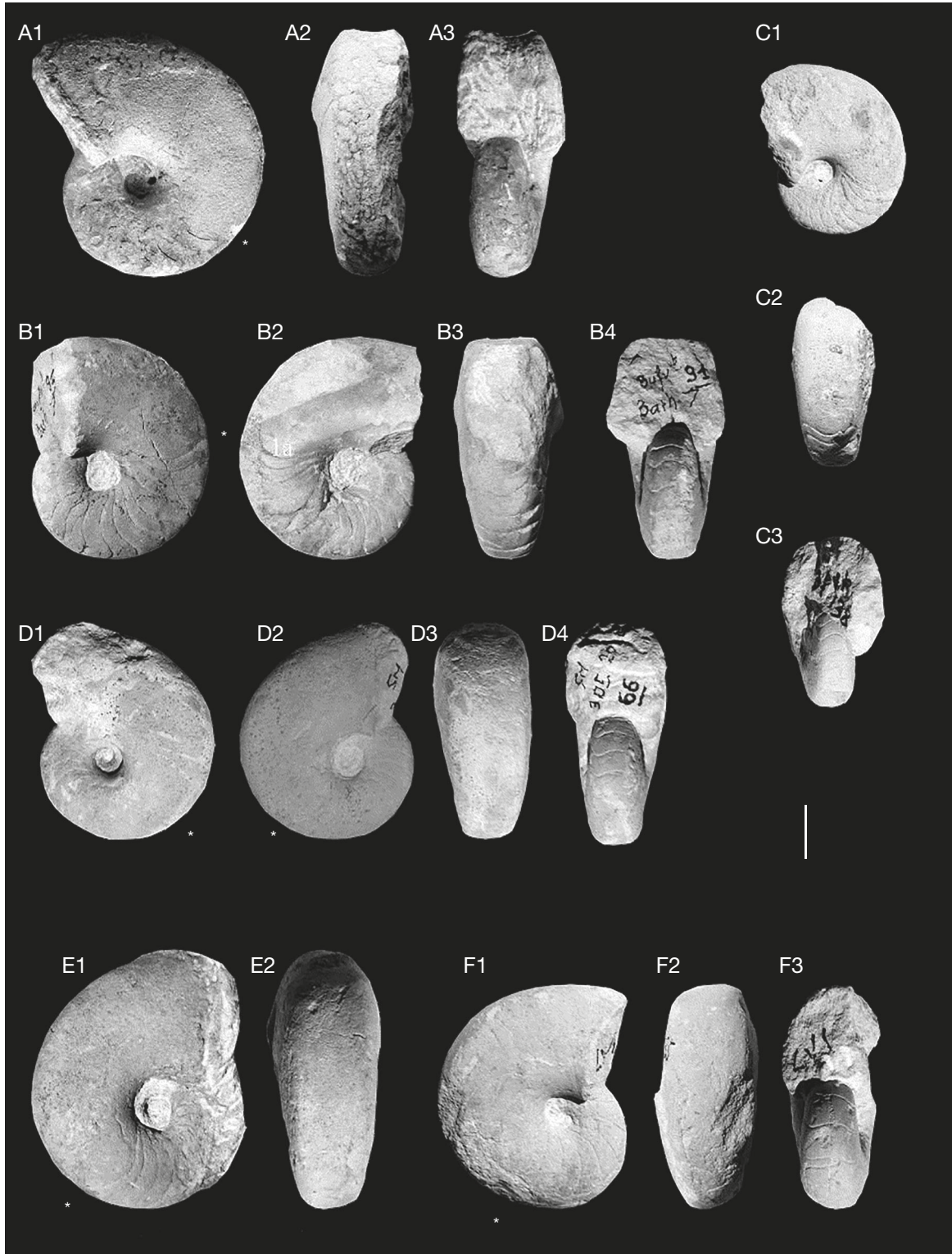
REFERENCES

- BRANGER P. 1989. — *La marge nord-aquitaine et le Seuil du Poitou au Bajocien : stratigraphie séquentielle, évolution biosédimentaire et paléogéographie*. 2 vols. PhD thesis, Université de Poitiers, Poitiers, 206 p., 27 fig. in text, 97 fig. H.T., 6 pl.
- BRANGER P. 2004. — Middle Jurassic Nautiloidea from Western France. *Rivista Italiana di Paleontologia e Stratigraphia (Special issue the 6th Int. Symposium on the Jurassic System, 16-19 September 2002)* 110 (1): 142-149, 3 pl.
- BRANGER P. 2009. — Buffevent (Deux-Sèvres), une nouvelle coupe de référence pour la base du Callovien. *Revue Naturaliste de Deux-Sèvres Nature Environnement* 2: 74-80, 2 fig., 2 pl.
- CHIRAT R. 1997. — *Les Nautilida post-triasiques. Paléobiologie, paléoécologie, paléobiogéographie et systématique à la lumière des données récemment acquises sur Nautilus*. MC thesis, Université de Caen Normandie, Caen, 322 p.
- COLLINS D. & WARD P. D. 1987. — Adolescent growth and maturity in *Nautilus*, in LANDMAN N. H. & SAUNDERS W. B. (eds), *Nautilus, The biology and paleobiology of a living fossil*. Vol. 6. Plenum Press (Topics in Geobiology), New York: 421-432.
- CRICK G. C. 1898. — Descriptions of new or imperfectly known species of *Nautilus* from the Inferior Oolite, preserved in the British Museum (Natural History). *Proceedings of the Malacological Society of London* 3: 117-139, figs I-XV.
- ÉNAY R., BRANGER P. AND BELLIGAUD G. 2012. — Un nouveau témoin des apports sud-téthysiens dans le Poitou: une espèce de *Micromphalites* d'origine arabique près de Niort, France. *Revue de Paléobiologie* 31 (1): 63-70.
- GRUPE FRANÇAIS D'ÉTUDES DU JURASSIQUE (GFEJ) 1997. — Ammonites, in CARIOU É. & HANTZPERGUE P. (coord.), *Biostratigraphie du Jurassique ouest-européen et méditerranéen : zonations parallèles et distribution des invertébrés et microfossiles*. Bulletin des Centres de recherches exploration-production, Elf-Aquitaine (coll. Mémoire; 17), Pau, 440 p.
- GRULKE W. 2016. — *Nautilus, Beautiful Survivor: 500 Million Years of Evolutionary*. @One Edition, Sherborne, 224 p.
- KING A., BRANGER P., EVANS D., FRANK J., GOOLAERTS S. & WARD P. 2016. — The *Nautilus* family tree & revised phylogeny, in GRULKE W. (ed.), *Nautilus, Beautiful Survivor: 500 Million Years of Evolutionary*. @One Edition, Sherborne: 131-145.
- KLUG C. 2004. — Mature modifications, the black band, the black aperture, the black stripe, and the periostracum in cephalopods from the Upper Muschelkalk (Middle Triassic, Germany). *Mitteilungen aus dem Geologisch-Paläontologischen Institut der Universität Hamburg* 88: 63-78.
- KRAFT S., KORN D. & KLUG C. 2008. — Patterns of ontogenic septal spacing in Carboniferous ammonoids. *Neues Jahrbuch für Geologie und Paläontologie - Abhandlungen* 250 (1): 31-44. <https://doi.org/10.1127/0077-7749/2008/0250-0031>
- MINOT J. M. & BRANGER P. 2007. — *Les Brachiopodes du Jurassique du Poitou, ce petit patrimoine ancestral sous nos pieds*. DSNE-APGP Éditions, Niort, 256 p.
- SAUNDERS W. B. & SPINOSA C. 1978. — Sexual dimorphism in *Nautilus* from Palau. *Paleobiology* 4 (3): 349-358. <https://doi.org/10.1017/S0094837300006047>
- SAUNDERS W. B., MAPES R. H., WHITE M. M., HASTIE S. T. & YAQIN K. 2017. — Descriptions of *Nautilus pompilius* Linnaeus, 1758 from the Type Area, Ambon, Molucca Islands, and from Sumbawa - Lombok Islands, Indonesia. *American Malacological Bulletin* 35 (1): 1-14. <https://doi.org/10.4003/006.035.0102>
- SAUVAGET H. 1906. — Le Banc Pourri du Poitou et sa faune (*Zone à Zigzagiceras zigzag et Parkinsonia ferruginea*). *Mémoires - Société historique et scientifique des Deux-Sèvres*, 23 p., 3 pl.
- TAJIKI A., MORIMOTO N., WANI R. & KLUG C. 2018. — Intraspecific variation in cephalopod conchs changes during ontogeny: perspectives from three-dimensional morphometry of *Nautilus pompilius*. *Paleobiology* 44 (1): 118-130. <https://doi.org/10.1017/pab.2017.36>
- TINTANT H. 1984a. — Contribution à la connaissance des nautilacés jurassiques. 1. Le sous-genre *Cenoceras* Hyatt dans le Lias du Sud-Est de la France. *Géologie de la France* 1-2: 29-66, 11 figs, 8 pl.
- TINTANT H. 1984b. — Exemples de nanisme spécifique chez les Nautiloïdes du genre *Paracenoceras* au Jurassique moyen. *Géobios* 17 (Supplement 1): 403-410, 3 figs, 1 pl. [https://doi.org/10.1016/S0016-6995\(84\)80197-7](https://doi.org/10.1016/S0016-6995(84)80197-7)
- WELSCH J. 1903. — Étude des terrains du Poitou dans le Déroit poitevin et sur les bords du Massif ancien de la Gâtine: 797-881.
- WILLEY A. 1902. — Contributions to the natural history of the pearly *Nautilus*: Zoological results based on material from New Britain, New Guinea, Loyalty Islands and elsewhere, collected during the years 1895, 1896 and 1897. Part 6. Cambridge University Press, Cambridge: 691-830. <https://doi.org/10.5962/bhl.title.46216>

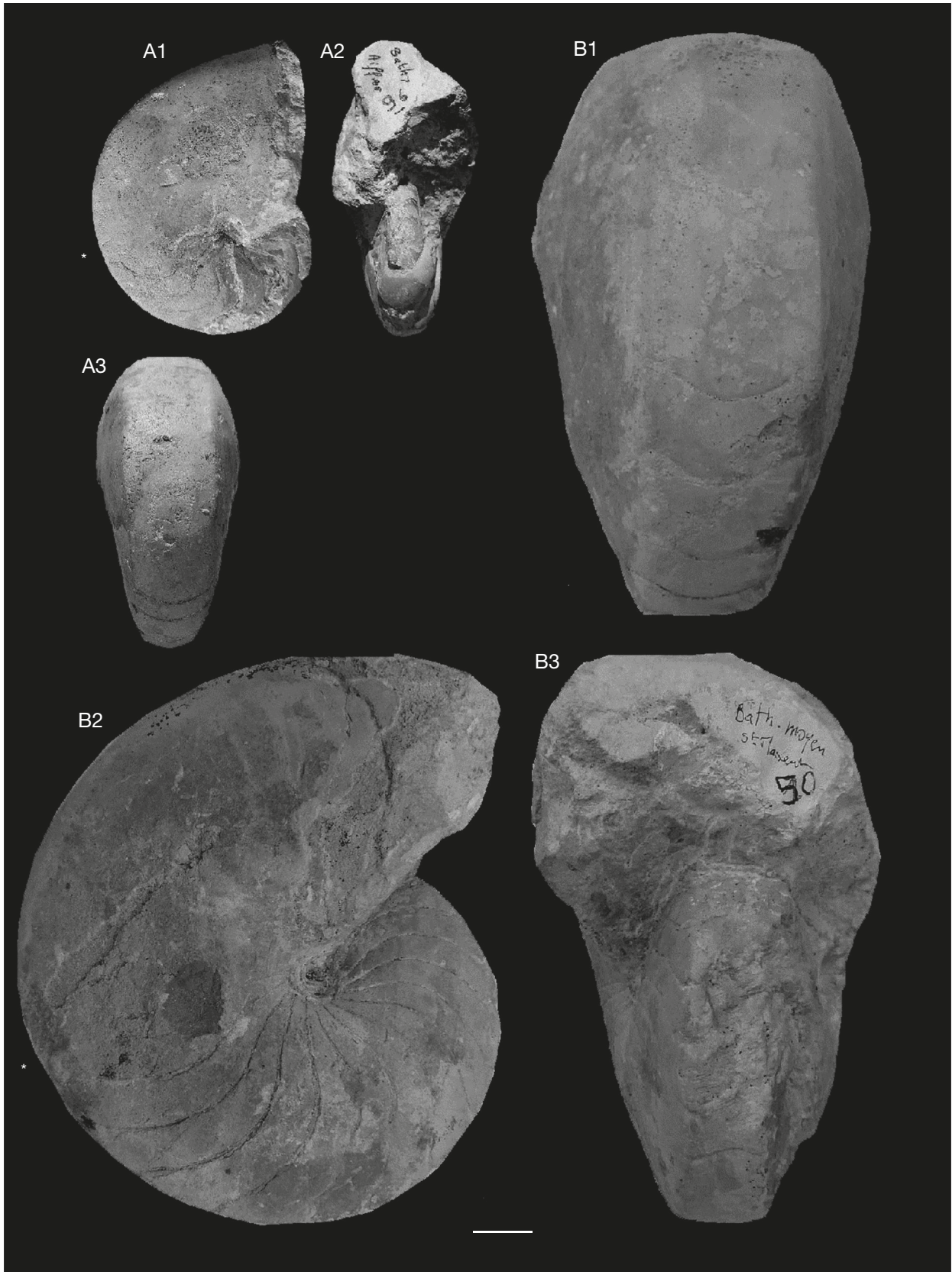
Submitted on 30 October 2019;
accepted on 5 August 2022;
published on 4 July 2023.

APPENDICES

APPENDIX 1. — *Micronautilus evolutus* n. gen., n. sp.: **A**, holotype 2021.BR.N.103, Buffevent quarry, bed 8, upper Bathonian, Retrocostatum Zone, Hannoveranus horizon; **B**, paratype 2021.BR.N.091, Buffevent quarry, top of bed 8, upper Bathonian, Retrocostatum Zone, Hannoveranus horizon; **C**, paratype 2021.BR.N.138, Buffevent quarry, bed 8, upper Bathonian, Retrocostatum Zone, Hannoveranus horizon. The smallest adult with approximated septas; **D**, paratype 2021.BR.N.066, Saint-Maixent-l'École, upper Bathonian, base of the Retrocostatum Zone; **E**, paratype 2021.BR.N.136, Buffevent quarry, bed 3, middle Bathonian, Bremeri Zone, Fortecostatum horizon; **F**, *Micronautilus minoti* n. gen., n. sp. paratype 2021.BR.N.135, les Hauts-de-Rochefort (Sainte-Éanne quarry), middle Bathonian, Progracilis Zone, Orbigny horizon. An asterisk (*) marks the beginning of the body chamber. Scale bar: 1 cm.



APPENDIX 2. — *Pseudaganides* Spath, 1927 and *Pictonautilus* Branger, 2004 from Bathonian beds: **A**, 2021.BR.N.096, *Pseudaganides* sp. upper Bathonian, Retrocostatium Zone, Aiffres, Deux-Sèvres, adult specimen, D = 61 mm; H = 36 mm (h = 0.59); W = 32 mm (w = 0.52); O = 0; W/H = 0.88; **B**, 2021.BR.N.050, *Pictonautilus verciacensis* (Lissajous, 1923), middle Bathonian, Bremeri Zone, Saint-Maixent-l'École (Deux-Sèvres), sub-adult specimen, D = 110 mm; H = 58 mm (h = 0.52); W = 64 mm (w = 0.58); U = 7 mm (u = 0.06); W/H = 1.10. An asterisk (*) marks the beginning of the body chamber. Scale bar: 1 cm.



APPENDIX 3. — *Micronutilus minoti* n. gen., n. sp.: **A**, holotype 2021.BR.N.150, Les Lucs, municipality of Echiré, temporary exposure, lower Bathonian, Zigzag Zone; **B**, paratype 2021.BR.N.152, Trottebuie quarry, municipality of Mougou, bed 8, lower Bathonian, Zigzag Zone; **C**, paratype 2021.BR.N.095, Souché, municipality of Niort, temporary roadworks, lower Bathonian, Zigzag Zone; **D**, paratype 2021.BR.N.042, Trottebuie quarry, bed 8, lower Bathonian, Zigzag Zone. An asterisk (*) marks the beginning of the body chamber. Scale bar: 1 cm.

