

*Papiliograptus retimarginatus* n. sp., a new retiolitid (Graptolithina) from the *praedeubeli/deubeli* Biozone (upper Homeric, Wenlock, Silurian), the recovery phase after the *lundgreni* Extinction Event

Anna KOZŁOWSKA & Denis BATES

DIRECTEURS DE LA PUBLICATION / PUBLICATION DIRECTORS :  
Bruno David, Président du Muséum national d'Histoire naturelle  
Étienne Ghys, Secrétaire perpétuel de l'Académie des sciences

RÉDACTEURS EN CHEF / EDITORS-IN-CHIEF: Michel Laurin (CNRS), Philippe Taquet (Académie des sciences)

ASSISTANTE DE RÉDACTION / ASSISTANT EDITOR: Adeline Lopes (Académie des sciences; [cr-palevol@academie-sciences.fr](mailto:cr-palevol@academie-sciences.fr))

MISE EN PAGE / PAGE LAYOUT: Fariza Sissi (Muséum national d'Histoire naturelle; [fariza.sissi@mnhn.fr](mailto:fariza.sissi@mnhn.fr))

RÉDACTEURS ASSOCIÉS / ASSOCIATE EDITORS (\*, took charge of the editorial process of the article/a pris en charge le suivi éditorial de l'article):

Micropaléontologie/*Micropalaeontology*

Maria Rose Petrizzo (Università di Milano, Milano)

Paléobotanique/*Palaeobotany*

Cyrille Prestianni (Royal Belgian Institute of Natural Sciences, Brussels)

Métazoaires/*Metazoa*

**Annalisa Ferretti\*** (Università di Modena e Reggio Emilia, Modena)

Paléoichthyologie/*Palaeoichthyology*

Philippe Janvier (Muséum national d'Histoire naturelle, Académie des sciences, Paris)

Amniotes du Mésozoïque/*Mesozoic amniotes*

Hans-Dieter Sues (Smithsonian National Museum of Natural History, Washington)

Tortues/*Turtles*

Juliana Sterli (CONICET, Museo Paleontológico Egidio Feruglio, Trelew)

Lépidosauromorphes/*Lepidosauromorphs*

Hussam Zaher (Universidade de São Paulo)

Oiseaux/*Birds*

Éric Buffetaut (CNRS, École Normale Supérieure, Paris)

Paléomammalogie (mammifères de moyenne et grande taille)/*Palaeomammalogy (large and mid-sized mammals)*

Lorenzo Rook (Università degli Studi di Firenze, Firenze)

Paléomammalogie (petits mammifères sauf Euarchontoglires)/*Palaeomammalogy (small mammals except for Euarchontoglires)*

Robert Asher (Cambridge University, Cambridge)

Paléomammalogie (Euarchontoglires)/*Palaeomammalogy (Euarchontoglires)*

K. Christopher Beard (University of Kansas, Lawrence)

Paléoanthropologie/*Palaeoanthropology*

Roberto Macchiarelli (Université de Poitiers, Poitiers)

Archéologie préhistorique/*Prehistoric archaeology*

Marcel Otte (Université de Liège, Liège)

COUVERTURE / COVER:

SEM pictures of holotype of *Papiliograptus retimarginatus* n. sp. Photo: Anna Kozłowska, Institute of Paleobiology Polish Academy of Sciences, Poland.

*Comptes Rendus Palevol* est indexé dans / *Comptes Rendus Palevol* is indexed by:

- Cambridge Scientific Abstracts
- Current Contents® Physical
- Chemical, and Earth Sciences®
- ISI Alerting Services®
- Geoabstracts, Geobase, Georef, Inspec, Pascal
- Science Citation Index®, Science Citation Index Expanded®
- Scopus®.

Les articles ainsi que les nouveautés nomenclaturales publiés dans *Comptes Rendus Palevol* sont référencés par /  
*Articles and nomenclatural novelties published in Comptes Rendus Palevol* are registered on:

- ZooBank® (<http://zoobank.org>)

*Comptes Rendus Palevol* est une revue en flux continu publiée par les Publications scientifiques du Muséum, Paris et l'Académie des sciences, Paris  
*Comptes Rendus Palevol* is a fast track journal published by the Museum Science Press, Paris and the Académie des sciences, Paris

Les Publications scientifiques du Muséum publient aussi / The Museum Science Press also publish:

*Adansonia*, *Geodiversitas*, *Zoosystema*, *Anthropozoologica*, *European Journal of Taxonomy*, *Naturae*, *Cryptogamie* sous-sections *Algologie*, *Bryologie*, *Mycologie*.

L'Académie des sciences publie aussi / The Académie des sciences also publishes:

*Comptes Rendus Mathématique*, *Comptes Rendus Physique*, *Comptes Rendus Mécanique*, *Comptes Rendus Chimie*, *Comptes Rendus Géoscience*, *Comptes Rendus Biologies*.

Diffusion - Publications scientifiques Muséum national d'Histoire naturelle

CP 41 - 57 rue Cuvier F-75231 Paris cedex 05 (France)

Tél. : 33 (0)1 40 79 48 05 / Fax: 33 (0)1 40 79 38 40

[diff.pub@mnhn.fr](mailto:diff.pub@mnhn.fr) / <https://sciencepress.mnhn.fr>

Académie des sciences, Institut de France, 23 quai de Conti, 75006 Paris.

© Publications scientifiques du Muséum national d'Histoire naturelle / © Académie des sciences, Paris, 2021

ISSN (imprimé / print): 1631-0683/ ISSN (électronique / electronic): 1777-571X

# *Papiliograptus retimarginatus* n. sp., a new retiolitid (Graptolithina) from the *praedeubeli/deubeli* Biozone (upper Homeric, Wenlock, Silurian), the recovery phase after the *lundgreni* Extinction Event

**Anna KOZŁOWSKA**

Institute of Paleobiology Polish Academy of Sciences,  
Twarda 51/55, 00-818 Warszawa (Poland)  
[akd@twarda.pan.pl](mailto:akd@twarda.pan.pl) (corresponding author)

**Denis BATES**

Department of Geography and Earth Sciences,  
Aberystwyth University, Aberystwyth (United Kingdom)

Submitted on 5 November 2019 | Accepted on 18 March 2020 | Published on 22 March 2021

[urn:lsid:zoobank.org:pub:6FCD1C79-A0BC-4C6A-97F2-5727E5FFECD7](https://doi.org/10.5852/cr-palevol2021v20a12)

Kozłowska A. & Bates D. 2021. — *Papiliograptus retimarginatus* n. sp., a new retiolitid (Graptolithina) from the *praedeubeli/deubeli* Biozone (upper Homeric, Wenlock, Silurian), the recovery phase after the *lundgreni* Extinction Event. *Comptes Rendus Palevol* 20 (12): 199-206. <https://doi.org/10.5852/cr-palevol2021v20a12>

## ABSTRACT

*Papiliograptus retimarginatus* n. sp. is reported from the *praedeubeli/deubeli* Biozone, upper Homeric (Silurian) of the Bartoszyce IG-1 drill core of Poland, Baltica. It is the second species of the genus *Papiliograptus* Lenz & Kozłowska-Dawidziuk, 2002, belonging to the new retiolitid fauna of the recovery period after the *lundgreni* Extinction Event. Two characteristic features of the new retiolitid fauna are the development of a geniculum and singular or paired genicular structures. The new form has extremely wide, singular, reticulated genicular processes. It is suggested that these structures may have been an adaptation to prevent the planktonic colony from sinking in the water column.

## RÉSUMÉ

*Papiliograptus retimarginatus* n. sp., un nouveau rétiolitidé (Graptolithina) de la biozone à *praedeubeli/deubeli* (Homérien supérieur, Wenlock, Silurien), phase de récupération après l'événement d'extinction *lundgreni*. On rapporte une nouvelle espèce de *Papiliograptus* Lenz & Kozłowska-Dawidziuk, 2002, la seconde appartenant à ce genre, de la biozone à *praedeubeli/deubeli* (Silurien, Homérien supérieur) du forage de Bartoszyce IG-1 (Pologne, paléo-continent de Baltica). *Papiliograptus retimarginatus* n. sp. appartient à la faune de rétiolitidés s'étant reconstituée après l'extinction liée à l'événement *lundgreni*. Les membres de cette faune se caractérisent par le développement du geniculum et des structures géniculaires paires. Chez l'espèce décrite ici, les dimensions d'un processus géniculaire unique sont particulièrement grandes. De telles structures accessoires larges chez les rétiolitidés étaient des adaptations servant à empêcher l'engloutissement de la colonie au mode de vie planctonique dans la masse d'eau.

## KEY WORDS

Graptolithina,  
Retiolitidae,  
Silurian,  
Baltica,  
*Papiliograptus*,  
genicular structures,  
new species.

## MOTS CLÉS

Graptolithina,  
Retiolitidae,  
Silurien,  
Baltica,  
*Papiliograptus*,  
structures géniculaires,  
espèce nouvelle.



## INTRODUCTION

The planktonic graptolites evolved from benthic Cambrian ancestors, and flourished in the Ordovician and Silurian, becoming one of the most important components of the marine zoo-plankton around the world. They were colonial organisms living in a housing built of separate secreted tubes, the thecae, forming tubaria. The thecae were built by zooids, presumably similar to their recent relatives, the Pterobranchia (Kozłowski 1949; Mitchell *et al.* 2013). They presumably fed on micro-plankton, filtering it using a pair of lophophores, feathery arms, similar to those in their recent benthic relatives, the Pterobranchia.

One of the most interesting groups of biserial graptolites is the Silurian retiolitids. Their tubaria were built by strong rod-like bandaged lists and incrementally deposited continuous fusellar membranes, usually not preserved (Bates & Kirk 1992, 1997). The tubaria are unique also in possessing an outer layer, the ancora sleeve, being a prolongation of the ancora umbrella (Bates *et al.* 2005).

At least two lineages of retiolitids survived the *lundgreni* Extinction Event in the late Homeric, and subsequently re-diversified. The genera *Gothograptus* Frech, 1897 and *Semigothograptus* Kozłowska, 2016 show distinctly different tubarium constructions that can be followed from the *lundgreni* Biozone into the post-extinction interval and the later recovery phase, largely recognized by the re-diversification in the *praedeubeli/deubeli* Biozone (Kozłowska 2016; Štorch & Manda 2019). New characters were established, including a free nema, simple ancora umbrella, geniculum and variously developed paired and unpaired genicular processes. These features were common and characteristic of several species of *Spinograptus* Bouček & Münch, 1952 (Kozłowska-Dawidziuk 1997; Kozłowska-Dawidziuk *et al.* 2001).

The post-extinction faunas bearing retiolitid taxa have been described in some detail mostly from Arctic Canada (Lenz 1993; Lenz & Kozłowska-Dawidziuk 2002; Lenz *et al.* 2012) and from boreholes in the Baltic region, largely from Poland (Kozłowska-Dawidziuk *et al.* 2001; Kozłowska-Dawidziuk 2004).

The new species *Papiliograptus retimarginatus*, described in this paper, shows particularly wide genicular processes (Figs 1; 2A), suggesting an adaptation to a quiet environment. All these faunas provide a window into the recovery phase after the mid-Homeric extinction and the diversification in the upper Homeric.

## MATERIAL AND METHODS

The material comes from the Bartoszyce IG-1 core, located in the eastern part of the Peribaltic Syncline of the Polish part of the East European Platform, Baltica. This area was located in low latitudes during the Silurian (Porębska *et al.* 2004 [Fig. 1A]). The studied material comes from depths 1647.9 m and 1649.0 m lower part of the *praedeubeli/deubeli* Biozone (see Porębska *et al.* 2004).

The rock samples from the Bartoszyce IG-1 drill core were treated with 10-30% hydrochloric acid solution. A fine hair-brush was used to pick and transfer specimens. Sediment not dissolved was partly removed using 5-15% HF. The specimens were imaged with a Philips XL scanning electron microscope and light microscope.

The material is stored in glycerin in plastic containers or on SEM stubs. Specimens are deposited at the Institute of Paleobiology of the Polish Academy of Sciences, Poland under catalogue number ZPAL G.62.

A single juvenile specimen (MBg 1092; JM 59) from a glacial boulder, Hiddensee, Rügen Island, northern Germany was originally identified as *Retiolites (Plectograptus) retimarginatus* by Hermann Jaeger (Maletz 2010). The specimen is not included in the type series as it was obtained from a glacial erratic, but is important to understand the construction of the tubarium of this species.

The terminology for retiolitid graptolites follows Bates *et al.* (2005) and Lenz *et al.* (2018). The term tubarium is used in the paper, as well as in some of our former papers, instead of the former term rhabdosome, used in the new edition of the Treatise of Invertebrate Palaeontology (Maletz *et al.* 2014). This term is also used in all Pterobranchia (recent and fossil) terminology, instead of using the term rhabdosome for the fossil Pterobranchia and the term coenecium for the extant members (Maletz *et al.* 2014) to describe the organic housing.

## ABBREVIATIONS

*Institutional Abbreviations*

MBg	Museum für Naturkunde, Hermann Jaeger collection, Berlin;
ZPAL	Institute of Paleobiology of the Polish Academy of Sciences, Warszawa.

## SYSTEMATIC PALEONTOLOGY

- Phylum HEMICHORDATA Bateson, 1885
- Class PTEROBRANCHIA Lankester, 1877
- Subclass GRAPTOLITHINA Bronn, 1849
- Superfamily RETIOLITOIDEA Lapworth, 1873
- Family RETIOLITIDAE Lapworth, 1873
- Subfamily *Retiolitinae* Lapworth, 1873

Genus *Papiliograptus* Lenz & Kozłowska-Dawidziuk, 2002

TYPE SPECIES. — *Papiliograptus papilio* Lenz & Kozłowska-Dawidziuk, 2002.

DIAGNOSIS (modified from Lenz *et al.* 2018). — Retiolitine graptoloid; tubarium narrowing distally, but appendix unknown; pleural and mid-ventral lists present and well developed; ancora umbrella simple; dense reticulum with zigzag or almost horizontal coarser ancora sleeve lists; proximal lateral orifices large, circular to kidney shaped; thecal orifices deep; (butterfly-shaped) reticulate genicular processes; lists with pustules.

SPECIES INCLUDED. — *Papiliograptus papilio* Lenz & Kozłowska-Dawidziuk, 2002.

*Papiliograptus retimarginatus* n. sp.; *Papiliograptus? petilus* Lenz & Kozłowska-Dawidziuk, 2002.

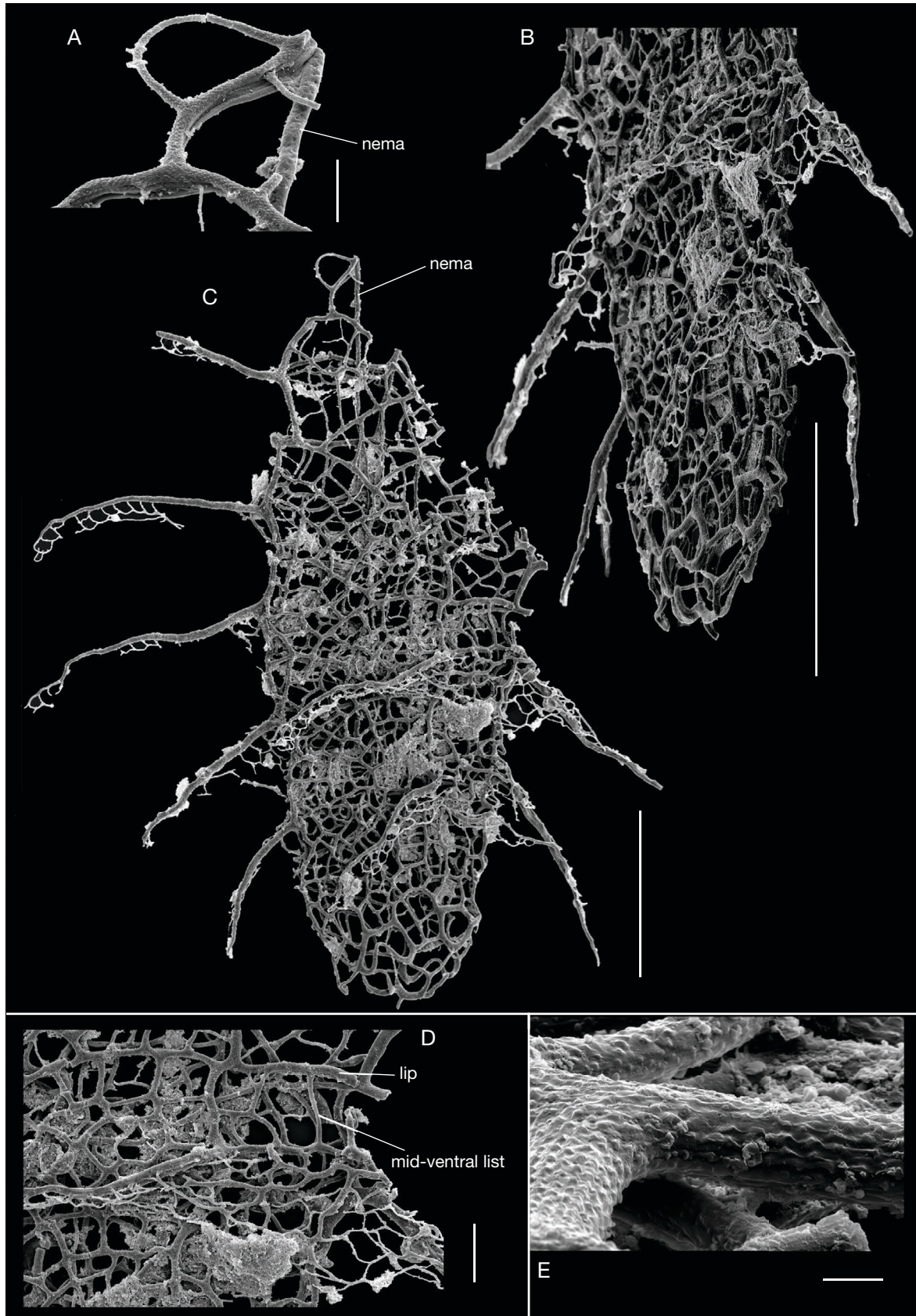


FIG. 1. — SEM pictures of holotype of *Papiliograptus retimarginatus* n. sp., ZPAL G.62/1, Bartoszyce IG-1 core, depth 1647.9 m, Poland. **A**, obverse view of distal end showing connection of nema with pleural list; **B**, oblique view showing ventral wall; **C**, ventro-lateral view of the obverse side of the specimen; **D**, enlargement of genicular structure of  $th^{12}$ ; **E**, enlargement of lists above ancora umbrella showing distinctive pustules. Scale bars: A, 100  $\mu$ m; B, C, 1 mm; D, 200  $\mu$ m; E, 20  $\mu$ m.



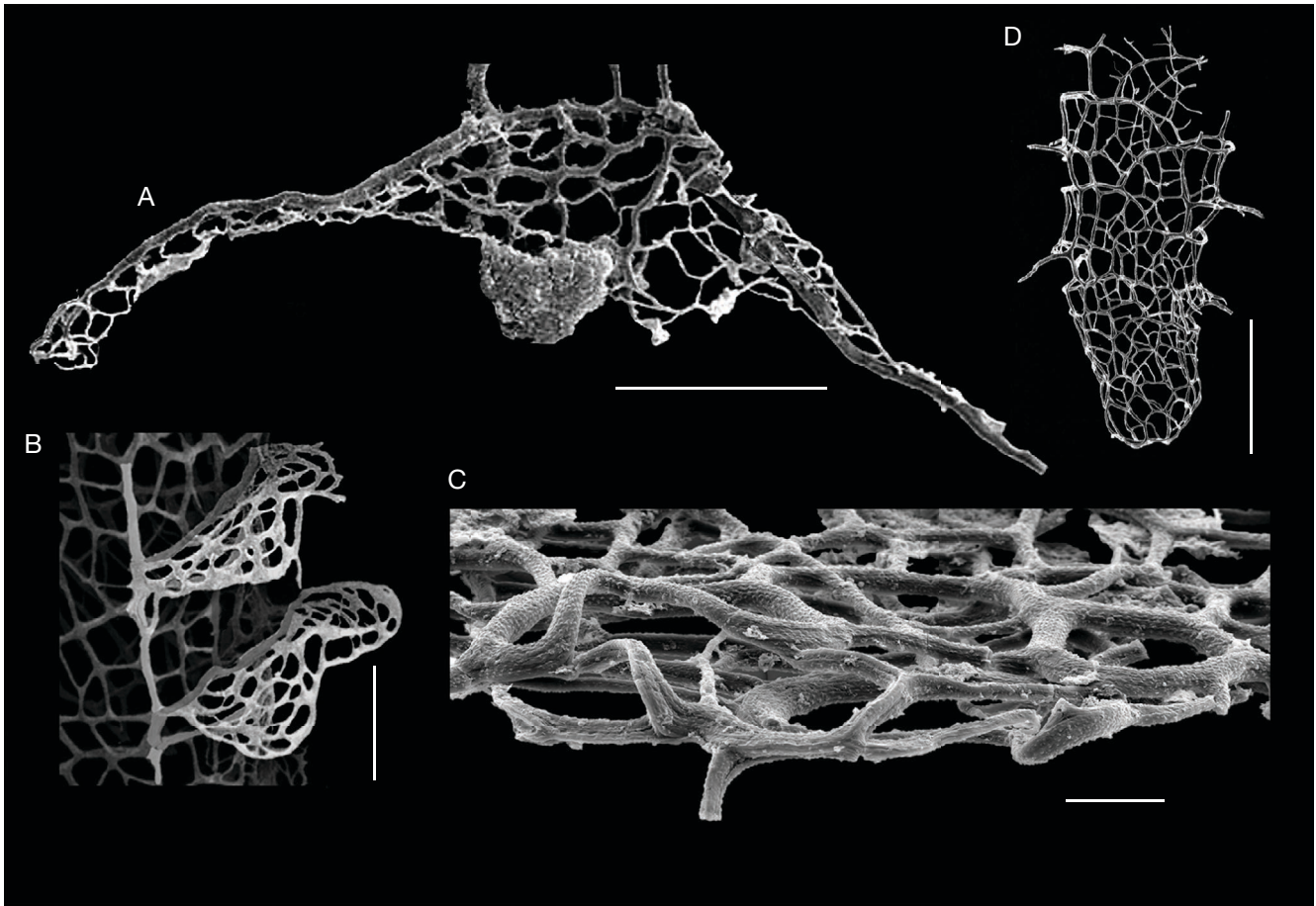


FIG. 2. — SEM pictures of some structures of *Papiliograptus retimarginatus* n. sp. and *Papiliograptus papilio* Lenz & Kozłowska-Dawidziuk, 2002: **A**, genicular structure of *Papiliograptus retimarginatus* n. sp., ZPAL G.62/1, Bartoszyce IG-1 core, depth 1647.9 m, Poland; **B**, genicular structures of *Papiliograptus papilio* Lenz & Kozłowska-Dawidziuk, 2002, Arctic Canada (based on Lenz & Kozłowska-Dawidziuk 2002); **C**, SEM picture of ancora umbrella, proximal view, *Papiliograptus retimarginatus* n. sp., holotype ZPAL G.62/1, Bartoszyce IG-1 core, depth 1647.9 m, Poland; **D**, *Papiliograptus retimarginatus* n. sp., juvenile, reverse view, MB.G 1092, Hiddensee, Mecklenburg-Vorpommern, Germany (based on Maletz *et al.* 2017, Fig. 12.9D). Scale bars: A, B, 500  $\mu$ m; C, 100  $\mu$ m; D, 1 mm.

#### DISCUSSION

*Papiliograptus? petilus* from Arctic Canada occurs in the lower part of the *praedeubeli/deubeli* Biozone, like the new species. It is described from well-preserved specimens which all lack the proximal end. The best preserved specimen is a parallel-sided fragment with *c.* seven thecal pairs (Lenz & Kozłowska-Dawidziuk 2002: figs 11; 12). The material lacks any genicular additions and does not show any indication of distal narrowing of the tubarium. Thus, it may belong to any genus in which the nema is free inside the colony and the ancora sleeve walls possess comparable list constructions (e.g. *Baculograptus*, *Papiliograptus*).

*Papiliograptus retimarginatus* n. sp.  
(Figs 1; 2A, C, D; 3)

[urn:lsid:zoobank.org:pub:6FCD1C79-A0BC-4C6A-97F2-5727E5FFECD7](https://doi.org/10.21203/rs.3.rs-1000000/v1)

*Retiolites* (*Plectograptus*) *retimarginatus* – Jaeger (*nomen nudum*). — Maletz 2010: 503, fig. 1 (no description).

*Papiliograptus retimarginatus* – Maletz 2010: 505, fig. 2 (no description).

*Papiliograptus papilio* – Kozłowska & Radzevičius 2013: 14-15, figs 3, 4. — Kozłowska 2016: 539, fig. 4A.

*Papiliograptus* sp. — Maletz *et al.* 2017: 218, fig. 12.9D.

**HOLOTYPE.** — ZPAL G.62/1 is from depth 1647.9 m, Bartoszyce IG-1 core, Poland.

**DIAGNOSIS.** — *Papiliograptus* with single genicular structure formed as long lateral lists, thinning distally and lacking a ventrally continuous (connecting) rim; delicate reticulum in the proximal part of the hoods, growing from geniculum and reaching sideways onto the preserved spiny extensions.

**ETYMOLOGY.** — The name of the species *retimarginatus* is from the Latin: *reti* means reticulum; *marginatus* means having a border or margin. It is based on the reticulated margins of the elongated genicular processes of this taxon. The name is retained from the specimen of Hermann Jaeger, who called the taxon *Retiolites* (*Plectograptus*) *retimarginatus* in his notes with no year.

**LOCUS TYPICUS AND STRATUM TYPICUM.** — Bartoszyce IG-1 core, north eastern Poland; lower part of the *praedeubeli/deubeli* Biozone, upper Homeric, Wenlock, Silurian.

**MATERIAL EXAMINED.** — Several specimens from depths 1647.9 m and 1649.0 m, Bartoszyce IG-1 core, mostly fragments, two specimens with proximal end. Paratype (ZPAL G.62/3-5) comes from

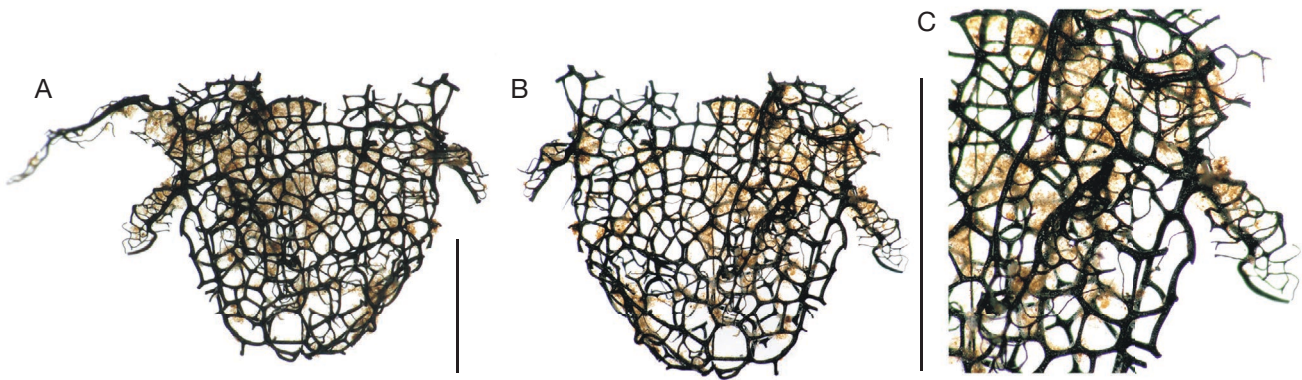


FIG. 3. — *Papiliograptus retimarginatus* n. sp., light photos of proximal part of mature tubarium, lateral view; paratype ZPAL G.62/2, Bartoszyce IG-1 core, depth 1649.0 m, Poland. **A, B**, whole specimen in obverse (A) and reverse (B) views; **C**, enlargement of genicular structure of th<sup>1</sup><sub>1</sub> and partly th<sup>2</sup><sub>1</sub>, reverse view. Scale bars: 1 mm.

depth 1649.0 m. The material is associated with *Gothograptus auriculatus* Kozłowska, Bates, Zalasiewicz & Radzevičius, 2019; and *Colonograptus praedeubeli* Jaeger, 1990. A single juvenile specimen (MBg 1092; JM 59) comes from a glacial boulder, Hiddensee, Rügen Island, northern Germany.

#### DESCRIPTION

The holotype is a proximal fragment with about five pairs of thecae. The specimen is preserved on an SEM stub in obverse view and is nearly completely flattened, showing a slightly distorted and rotated lateral preservation with the ventral side of thecal series two shown completely, while the apertural orifices of thecal series one are covered and only the lateral genicular constructions are visible (Figs 1; 2A). The specimen has a maximum length of *c.* 4.5 mm.

The paratype specimen represents the proximal part of a tubarium in which only the first two thecal pairs are preserved and the genicular processes of th<sup>1</sup><sub>1</sub> and 2<sup>1</sup> are well-developed (Fig. 3).

The tubarium widens slightly from the level of the ancora umbrella rim, which is the narrowest part of the colony. The approximate lateral width of the holotype tubarium, measured between the pleural lists below the lip of th<sup>1</sup><sub>1</sub>, is 0.7 mm and reaches 1.1 mm at the level of the lip of th<sup>3</sup><sub>2</sub>. The 2TRD, two thecae repeat distance (Howe 1983) at th<sup>4</sup><sub>1</sub> is 1.38 mm. The nema is free inside the tubarium, but appears to be connected to a rounded list, probably representing part of th<sup>6</sup><sub>1</sub> in the holotype, which may indicate a finite growth of the colony. The length of the sicula cannot be determined from this specimen and has not been recognized in other material.

The ancora umbrella is formed from seven meshes and is fairly asymmetrical, as the paired ventro-lateral ancora umbrella lobes reach much higher on the th<sup>2</sup><sub>1</sub> side. The rim of the ancora umbrella is strongly lobate and shows paired lobes on the ventro-lateral sides of both thecal series and two lobes on the lateral sides of the tubarium, which are distinctive in ventral view of well-preserved material, but difficult to see in the flattened type material.

The ancora umbrella is moderately deep, reaching a width of *c.* 0.8 mm on the obverse and reverse sides and a depth of

*c.* 0.65 mm at the ventro-lateral lobes in the holotype, but as the specimen is flattened, this might not be accurate.

The single specimen from the Jaeger collection preserved in full relief is about 0.7 mm wide and *c.* 0.5 mm high. Drawing by Jaeger (Maletz 2010: fig. 1) shows the reverse side of the specimen and highlights the characteristic lateral, nearly vertical lobes of the ancora umbrella. The width across these lateral lobes of the ancora umbrella is 0.55 mm in the Jaeger specimen (Fig. 2D).

The shape of the proximal ventral orifice on the theca one series is approximately hexagonal on the holotype (Figs 1; 4). In the Jaeger specimen the proximal ventral orifice of the theca two series is tetragonal. The rounded proximal lateral orifices are located centrally on the lateral sides of the tubarium. They may appear as of kidney shape when the colony is flattened and the lateral lobes rotated upwards as in the holotype of the species. However, in the original three-dimensionally preserved material, they show a widely arched rim with a horizontal base.

The ancora sleeve is outlined on the ventral (thecal orifice) sides by pleural lists, the lateral apertural rods, genicular lists and thecal lips. The genicular lists are thinner than thecal lips, lateral apertural rods and pleural lists and in more distal thecae it is difficult to distinguish them from the reticulum of the genicular structure. The mid-ventral lists are relatively thin in the available material and appear to be constructed at a later stage of the colony development (Figs 1; 4). Thus, they appear to be incomplete in distal parts of the few available specimens and are difficult to differentiate from other lists on the ventral side of the tubarium.

The lateral walls of the ancora sleeve show a distinct dense meshwork of lists, showing an indistinct zigzag pattern of slightly wider main lists, while smaller meshes are aligned in curved rows. The single larger specimen from Lithuania appears to show a more regular zigzag pattern (Kozłowska & Radzevičius 2013; Kozłowska 2016: fig. 4A) in the medial and distal part of tubarium. The cortical bandages show the distinctive, regularly developed pustules on the surface.

The thecal orifices have a semi-rectangular shape and increase slightly in size and regularity towards the distal end. They bear



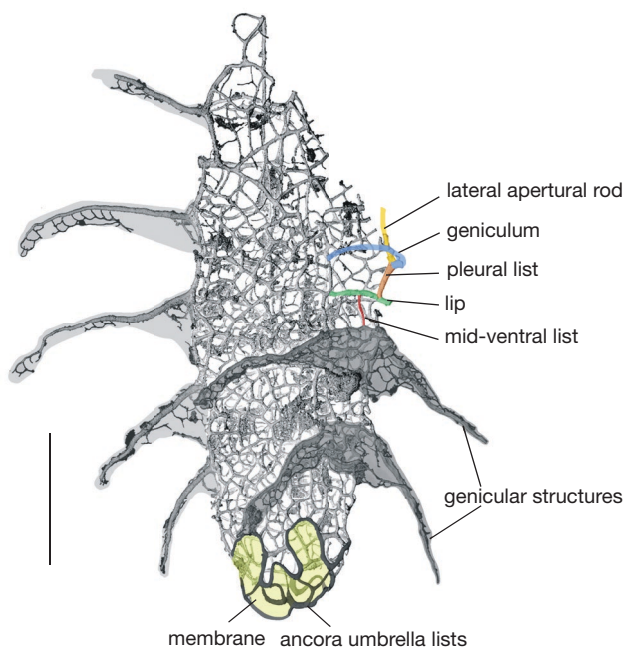


FIG. 4. — Reconstruction of holotype of *Papiliograptus retimarginatus* n. sp. with coloured main structures of tubarium. Note the large genicular structures. Scale bar: 1 mm.

paired, long and outwards directed genicular processes with seams on the inside, indicating the former presence of a non-preserved membrane. The membranes supported a delicate reticulum spreading along the spines and being widest in the centre. The genicular processes of *Papiliograptus retimarginatus* n. sp. represent some of the largest genicular constructions among retiolitids. The distance between the tips of the lateral lists of the genicular processes is about 1.8–2.0 mm in th1<sup>2</sup>, about 2.5 mm in th2<sup>2</sup>.

The genicular processes appear to start as “spiny” extensions from the genicular edges of the thecal orifices and the delicate reticulum developed along the genicular lists as well as these processes which grow out for a considerable distance. Strong, curved bounding lists then appear at the geniculum and spread on the inner side of the lateral genicular “spines” to form a meshwork of fine meshes. At most a maximum of two layers of meshes can be seen along the genicular processes, but it may be assumed that a much wider membrane was extending between the processes.

## DISCUSSION

### OCCURRENCE OF *PAPILIOGRAPTUS* SPECIES

*Papiliograptus* species appear to be restricted to Laurentia and Baltica, evolving during the post-*lundgreni* extinction interval, during the recovery phase of graptolite faunas. The type species *Papiliograptus papilio* Lenz & Kozłowska-Dawidziuk, 2002 is described from the Arctic Canada, Laurentia, from the middle

part of the *praedeubeli/deubeli* Biozone (Lenz & Kozłowska-Dawidziuk 2002).

The second species of the genus, *Papiliograptus retimarginatus* n. sp. is described herein from Poland, East European Platform, Baltica, from the *praedeubeli/deubeli* Biozone.

Kozłowska & Radzevičius (2013) described *Papiliograptus papilio* from the lower part of the *praedeubeli* Biozone of the Šiupyliai-69 drill core of Lithuania, based upon a number of fragments and a single mature specimen. This specimen is comparable to *Papiliograptus retimarginatus* n. sp. in the development of the genicular extensions which have destroyed distal ends. We include this material in *Papiliograptus retimarginatus* n. sp. because the remnants of the genicular processes show big similarity of the construction to the new species. There are some fragments of the thicker “spiny” extensions and delicate reticulum between them.

A single immature specimen known from a North German glacial boulder, referred in manuscript notes to the *praedeubeli* Biozone by Jaeger, is regarded as *Papiliograptus retimarginatus* n. sp. However, the characteristic genicular structures are not well-developed and partly destroyed (Fig. 2D).

Porębska *et al.* (2004: fig. 3F) illustrated a single specimen with a proximal end and three pairs of thecae as *Papiliograptus papilio* (?) from the *praedeubeli* Biozone of Poland, East European Platform, Baltica.

Specimens identified on the range chart as *Papiliograptus papilio* from the base of the *praedeubeli* Biozone from Lithuania, East European Platform, Baltica (Radzevičius *et al.* 2014: fig. 2) have not been illustrated. Thus, their identity remains uncertain.

### GENICULAR STRUCTURES IN *PAPILIOGRAPTUS* SPECIES

*Papiliograptus papilio* and *Papiliograptus retimarginatus* n. sp. can be differentiated easily by the shape and size of their respective genicular processes. The genicular hood of *Papiliograptus papilio* is a two-lobed single hood construction with a rounded rim on the geniculum of the thecae (Fig. 5B). The rim is continuous and composed of a delicate reticulum, not strong bordering lists as in *Papiliograptus retimarginatus* n. sp. This hood extends horizontally from the ventral wall of the tubarium or bends slightly downwards in the distal end at the rim.

A distinct lateral thickening as in the processes of *Papiliograptus retimarginatus* n. sp. is not developed in *Papiliograptus papilio*. They are much smaller and only slightly extend beyond the borders of the thecal orifices (Fig. 5). In *Papiliograptus retimarginatus* n. sp. the genicular constructions distinctively extend and two distinct thickened borders extend like paired spines outwards forming an obtuse angle with each other (Figs 2A; 5A). Proximally, a meshwork of curved bars made of cortical bandages forms a variably wide horizontal to sub-horizontal hood, but the mesh also reaches outwards along the “spines” for a considerable distance. The membranes supported a delicate reticulum spreading along the spines and being widest in the centre.

## CONCLUSIONS

The genus *Papiliograptus*, composed of two species (*P. papilio* and *P. retimarginatus* n. sp.), occurs in two Silurian palaeocontinents,



Laurentia and Baltica. The type species of the genus occurs in Laurentia (Arctic Canada), whereas *Papiliograptus retimarginatus* n. sp. is endemic to Baltica (Poland, Lithuania and glacial erratics from Germany). The position of Baltica and Laurentia during the *praedeubeli/deubeli* and *praedeubeli* biozones was close to the equator, which suggests a warm water palaeo-realm for *Papiliograptus*. The fact that the genus *Papiliograptus* is known only from isolated material may suggest that the delicate meshwork of some tubaria can be overlooked on shale bedding surfaces from other regions.

*Papiliograptus retimarginatus* n. sp. has the largest genicular processes known in retiolitids. They were formed by strong lists and a network of thin lists, and a thin membrane spread between them. This confirms a trend to develop structures extending from the main part of the tubarium, characteristic of retiolitids which evolved during the recovery period after the *lundgreni* Extinction Event. In contrast, the gothograptids from pre- and immediately post the event have genicular structures covering the thecal openings, e.g. *Gothograptus obtectus* and *Gothograptus nassa* from the *dubius/nassa* Biozone.

Both fossil and recent holoplankton organisms have similar problems with opposing sinking in the water column. We have no direct knowledge of how extinct planktonic pterobranchs, the graptolites, would have behaved in the water column among other holoplanktonic organisms. Some indication of their life style is given by the shape and construction of their tubaria. The large extensions of *Papiliograptus retimarginatus* n. sp. formed a continuous surface which could be interpreted to have developed to retard sinking in quiet sea water, as in some present-day plankton. Recent holoplanktonic organisms have many kinds of mechanisms to reduce the rate at which they sink in the water column. In general, the shape of the body evolves to increase the surface area of such organisms. Many zooplankton have flattened and elongated appendages or lateral spines. For example, some marine planktonic polychaetes have many parapodia which are greatly expanded laterally; sometimes to about 20 pairs as in *Tomopteris nissenii* Rosa, 1908 (Fernández-Álamo 2000). In the case of some Euphausiacea (krill) (Crustacea) the extensions of the projecting parts of the body are antennae, several pairs of thoracic legs (pereopods), swimming legs (pleopods), and externally visible gills (Miller & Hampton 1989).

The life strategy in the water column of the graptolites, the dominant Palaeozoic plankton, with their colonial organisation and wide variety of tubaria, is unique and unknown in the recent plankton.

#### Acknowledgements

Thanks are given to Jörg Maletz for providing the data and SEM picture of the Herman Jaeger's specimen. We are grateful to reviewers Petr Štorch and David Loydell who helped to improve this manuscript. Also we thank colleagues from Institute of Paleobiology PAS: Adam Halamski for French translation of the abstract, Aleksandra Hołda-Michalska for help in preparing the figures and Grażyna Matriba for technical assistance.

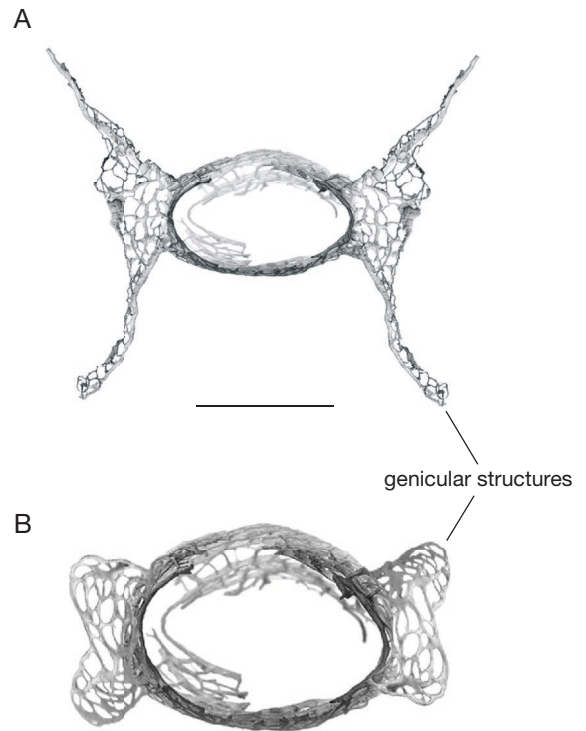


FIG. 5. — Schematic pictures comparing the genicular structures of *Papiliograptus retimarginatus* n. sp. (A) with those of *Papiliograptus papilio* Lenz & Kozłowska-Dawidziuk, 2002 (B). Illustrations are based on Fig. 2A and *Papiliograptus papilio* from Lenz & Kozłowska-Dawidziuk (2002: fig. 12. 2). Scale bar: 1 mm.

#### REFERENCES

- BATES D. E. B. & KIRK N. H. 1992. — The ultrastructure, mode of construction and functioning of a number of Llandovery ancorate diplograptid and retiolitid graptolites. *Modern Geology* 17: 1-270.
- BATES D. E. B. & KIRK N. H. 1997. — The ultrastructure, mode of construction and functioning of the genera *Stomatograptus* and *Retiolites*, with an appendix on the incremental construction of the rhabdosome of *Petalolithus*, and its comparison with that of the thecal framework in *Retiolites* and *Stomatograptus*. *Institute of Geography and Earth Sciences, University of Wales, Aberystwyth* 10: 1-168.
- BATES D. E. B., KOZŁOWSKA A. & LENZ A. C. 2005. — Silurian retiolitid graptolites: Morphology and evolution. *Acta Palaeontologica Polonica* 50: 705-720.
- BATESON W. 1885. — The later stages in the development of *Balanoglossus kowalevskii*, with a suggestion as to the affinities of the Enteropneusta. *The Quarterly journal of microscopical science* 25: 81-122.
- BRONN H. G. 1849. — *Handbuch der Geschichte der Natur. Dritter Band, Zweite Abtheilung. III. Theil: Organisches Leben (Schluß). Index palaeontologicus oder Ueberblick der bis jetzt bekannten fossilen Organismen.* Schweizerbart, Stuttgart: 1109 p. <https://gallica.bnf.fr/ark:/12148/bpt6k981392.image>
- FERNÁNDEZ-ÁLAMO M. A. 2000. — Tomopterids (Annelida: Polychaeta) from the eastern tropical Pacific Ocean. *Bulletin of Marine Science* 67: 45-53.
- HOWE M. P. A. 1983. — Measurement of thecal spacing in graptolites. *Geological Magazine* 120: 635-638. <https://doi.org/10.1017/S0016756800027795>

- KOZŁOWSKA A. 2016. — A new generic name, *Semigothograptus*, for *Gothograptus? meganassa* Rickards and Palmer 2002, from the Silurian post-*lundgreni* Biozone recovery phase, and comparative morphology of retiolitids from the lowermost upper Homeric (upper Wenlock). *Zootaxa* 4208: 534-546. <https://doi.org/10.11646/zootaxa.4208.6.2>
- KOZŁOWSKA-DAWIDZIUK A. 1997. — Retiolitid graptolite *Spinograptus* from Poland and its membrane structures. *Acta Palaeontologica Polonica* 42: 391-412.
- KOZŁOWSKA-DAWIDZIUK A. 2004. — Evolution of retiolitid graptolites – a synopsis. *Acta Palaeontologica Polonica* 49: 505-518.
- KOZŁOWSKA A. & RADZEVIČIUS S. 2013. — Upper Homeric and Gorstian (Silurian) Retiolitidae (Graptolithina) from Lithuania and Latvia. *Memoirs of the Association of Australasian Palaeontologists* 44: 11-23.
- KOZŁOWSKA-DAWIDZIUK A., LENZ A. C. & ŠTORCH P. 2001. — Upper Wenlock and Lower Ludlow (Silurian) post-extinction graptolites, Vřeradice section, Barrandian area, Czech Republic. *Journal of Paleontology* 75: 147-164. <https://doi.org/10.1017/S0022336000031966>
- KOZŁOWSKI R. 1949. — Les graptolithes et quelques nouveaux groupes d'animaux du Trémadoc de la Pologne. *Acta Palaeontologica Polonica* 3: 1-235.
- LANKESTER E. R. 1877. — Notes on the embryology and classification of the animal kingdom; comprising a revision of speculations relative to the origin and significance of the germ layers. *The Quarterly journal of microscopical science* 17: 339-454.
- LAPWORTH C. 1873. — Notes on the British graptolites and their allies. I. On an improved classification of the *Rhabdophora*. *Geological Magazine* 10: 555-560.
- LENZ A. C. 1993. — Late Wenlock and Ludlow (Silurian) Plectograptinae (retiolitid graptolites), Cape Phillips Formation, Arctic Canada. *Bulletins of American paleontology* 104: 1-52. <https://www.biodiversitylibrary.org/page/10682061>
- LENZ A. C. & KOZŁOWSKA-DAWIDZIUK A. 2002. — Upper Homeric (Upper Wenlock, Silurian) graptolites from Arctic Canada. *Journal of Paleontology* 76: 321-346. <https://doi.org/10.1017/S0022336000041731>
- LENZ A. C., BATES D. E. B., KOZŁOWSKA A. & MALETZ J. 2018. — Part V, second revision, chapter 26: Family Retiolitidae: Introduction, morphology, and systematic descriptions. *Treatise Online* 114: 1-37
- LENZ A. C., SENIOR S., KOZŁOWSKA A. & MELCHIN M. J. 2012. — Graptolites from the mid Wenlock (Silurian), Middle and Upper Sheinwoodian, Arctic Canada. *Palaeontographica Canadiana* 32: 1-93.
- MALETZ J. 2010. — Retiolitid graptolites from the collection of Hermann Jaeger II: *Cometograptus*, *Spinograptus* and *Plectograptus*. *Paläontologische Zeitschrift* 84: 501-522.
- MALETZ J., BATES D. E. B., BRUSSA E. D., COOPER R. A., LENZ A. C., RIVA J. F., TORO B. A. & ZHANG Y. 2014. — Part V, Revised, Chapter 12: Glossary of the Hemichordata. *Treatise Online* 62: 1-23.
- MALETZ J., BATES D. E. B., KOZŁOWSKA A. & LENZ A. 2017. — The retiolitid graptolites, in BENTON M. J. (ed.), *Graptolite Paleobiology*. Wiley Blackwell, Chichester, West Sussex: 207-220.
- MILLER D. G. M. & HAMPTON I. 1989. — Biology and ecology of the Antarctic krill (*Euphausia superba* Dana): a review. *BIO-MASS scientific series* 9: 1-166.
- MITCHELL C. E., MELCHIN J. M., CAMERON C. B. & MALETZ J. 2013. — Phylogenetic analysis reveals that *Rhabdopleura* is an extant graptolite. *Lethaia* 46: 34-56. <https://doi.org/10.1111/j.1502-3931.2012.00319.x>
- PORĘBSKA E., KOZŁOWSKA-DAWIDZIUK A. & MASIĄK M. 2004. — The *lundgreni* event in the Silurian of the East European Platform, Poland. *Palaeogeography, Palaeoclimatology, Palaeoecology* 213: 271-294. <https://doi.org/10.1016/j.palaeo.2004.07.013>
- RADZEVIČIUS S., SPIRIDONOV A. & BRAZAUSKAS A. 2014. — Integrated middle-upper Homeric (Silurian) stratigraphy of the Viduklė-61 well, Lithuania. *GFF* 136: 218-222. <https://doi.org/10.1080/11035897.2013.866976>
- ŠTORCH P. & MANDA Š. 2019. — Little known Homeric (lower Silurian) graptolites from Kosov quarry near Beroun, the Czech Republic. *Fossil Imprint* 75: 44-58. <https://doi.org/10.1016/j.palaeo.2019.04.026>

Submitted on 5 November 2019;  
accepted on 18 March 2020;  
published on 22 March 2021.