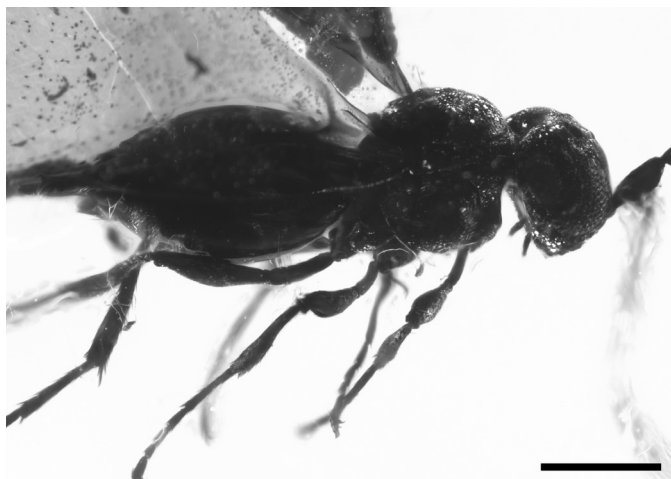


COMPTES RENDUS PALEVOL

Volume 17 (2018) – No. 8 – October–December



Cover illustration: Holotype female (No. 855) of *Mymaropsis baabdaensis* sp. n. a: Hindwing (hw) and posterior margin of forewing (fw) in ventral view, veins labelled; b: distal part of right antenna; c: body in right lateral view; d: protibial spur. For further details, see L. Krogmann et al., 2016. C. R. Palevol 15, 483–487

Illustration de couverture : Holotype femelle (n° 855) de *Mymaropsis baabdaensis* sp. n. a : Aile arrière (hw) et marge postérieure de l'aile avant (fw) en vue ventrale, veines marquées ; b : partie distale de l'antenne droite ; c : corps en vue latérale droite ; d : ramification protibiale. Pour de plus amples informations, voir L. Krogmann et al., 2016. C. R. Palevol 15, 483–487.

General Palaeontology, Systematics and Evolution / *Paléontologie générale, systématique et évolution*

(Invertebrate Palaeontology / *Paléontologie des Invertébrés*)

- Occurrence of the Lower Cambrian anemone-style trace fossils in the Zabuk Formation (Mardin–Derik, SE Turkey)
İzzet Hoşgör, İsmail Ömer Yılmaz 495

(Vertebrate Palaeontology / *Paléontologie des Vertébrés*)

- New Patagonian baurusuchids (Crocerylomorpha; Notosuchia) from the Bajo de la Carpa Formation (Upper Cretaceous; Neuquén, Argentina): New evidences of the early sebecosuchian diversification in Gondwana
Juan Martín Leardi, Diego Pol, Zulma Gasparini 504
- Revising the species “*Mustela*” *ardea* Gervais, 1848–1852 (Mammalia, Mustelidae): *Martellictis* gen. nov. and the systematics of the fossil “Galictinae” of Eurasia
Saverio Bartolini Lucenti 522

Continued on the next page

Contents (continued)

- A morid cod (Gadiformes, Moridae) from the early Oligocene deposits of the Czech Republic
Tomáš Přikryl 536

Human Palaeontology and Prehistory / *Paléontologie humaine et préhistoire*

(Palaeoanthropology / *Paléoanthropologie*)

- Dental microwear texture analysis of Neandertals from Hortus cave, France
Frank L'Engle Williams, Jessica L. Droke, Christopher W. Schmidt, John C. Willman, Gaël Becam, Marie-Antoinette de Lumley 545
- Fauna, environment and human presence during MIS5 in the North of Spain: The new site of Valdavara 3
Manuel Vaquero, Jan van der Made, Hugues-Alexandre Blain, Nuria Ibáñez, Juan Manuel López-García, Florent Rivals, Susana Alonso, Alicia Ameijenda, Maria Bennàsar, Mónica Fernández-García, Arturo de Lombera-Hermida, Irene Valverde 557
- A 400,000-year-old Acheulean assemblage associated with the Aroeira-3 human cranium (Gruta da Aroeira, Almonda karst system, Portugal)
Joan Daura, Montserrat Sanz, Marianne Deschamps, Henrique Matias, Marina Igreja, Lucia Villaescusa, Sandra Gómez, Angel Rubio, Pedro Souto, Filipa Rodrigues, João Zilhão 594
- Epipaleolithic human appendicular remains from Ein Gev I, Israel
Erik Trinkaus 616