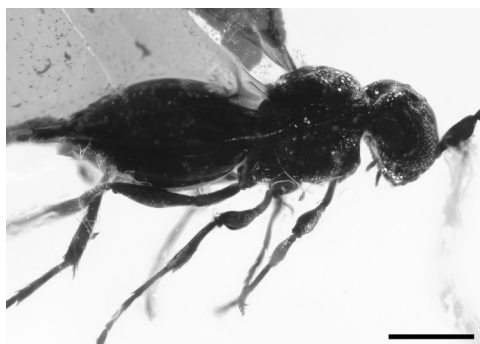


COMPTES RENDUS PALEVOL

Volume 16 (2017) – No. 7 – October



Cover illustration. Holotype female (No. 855) of *Myrmaropsis baabdaensis* sp. n. a: Hindwing (hw) and posterior margin of forewing (fw) in ventral view, veins labelled; b: distal part of right antenna; c: body in right lateral view; d: protibial spur. For further details, see L. Krogmann et al., 2016. C. R. Palevol 15, 483–487.

Illustration de la couverture. Holotype femelle (n° 855) de *Myrmaropsis baabdaensis* sp. n. a : Aile arrière (hw) et marge postérieure de l'aile avant (fw) en vue ventrale, veines marquées ; b : partie distale de l'antenne droite ; c : corps en vue latérale droite ; d : ramification protibiale. Pour de plus amples informations, voir L. Krogmann et al., 2016. C. R. Palevol 15, 483–487.

General Palaeontology, Systematics and Evolution / *Paléontologie générale, systématique et évolution*

(Invertebrate Palaeontology / *Paléontologie des invertébrés*)

- The first fossil Dipsocoridae found in the early Eocene amber of France (Hemiptera: Heteroptera)
Viktor Hartung, Romain Garrouste, André Nel 715

(Vertebrate Palaeontology / *Paléontologie des vertébrés*)

- First mammal of Gondwanan lineage in the early Eocene of India
Vivesh V. Kapur, Debasis P. Das, Sunil Bajpai, Guntupalli V.R. Prasad 721
- *Prominatherium dalmatinum* from the late Eocene of Grancona (Vicenza, NE Italy). The oldest terrestrial mammal of the Italian peninsula
Federica Grandi, Fabio Bona 738
- A new Ruscinian site in Europe: Baza-1 (Baza basin, Andalusia, Spain)
Sergio Ros-Montoya, Bienvenido Martínez-Navarro, María-Patrocínio Espigares, Antonio Guerra-Merchán, José Manuel García-Aguilar, Pedro Piñero, Ainoa Rodríguez-Rueda, Jordi Agustí, Oriol Oms, Paul Palmqvist 746
- Biogeography and chronology of the Eurasian extinct rhinoceros *Stephanorhinus etruscus* (Mammalia, Rhinocerotidae)
Luca Pandolfi, Esperanza Cerdeño, Vlad Codrea, Tassos Kotsakis 762
- *Canis othmanii* sp. nov. (Carnivora, Canidae) from the early Middle Pleistocene site of Wadi Sarrat (Tunisia)
Lamjed Amri, Saverio Bartolini Lucenti, Moncef Saïd Mtimet, Narjess Karoui-Yaakoub, Sergio Ros-Montoya, Maria-Patrocínio Espigares, Mabrouk Boughdiri, Nebiha Bel Haj Ali, Bienvenido Martínez-Navarro 774

Continued on the next page

Contents (continued)

- Assessing astragalar morphology and biomechanics in western Palaeartic *Bison* populations with geometric morphometrics
Ioannis Maniakas, Dimitris S. Kostopoulos 783
- Comparative paleohistology in osteoderms of Pleistocene *Panochthus* sp. Burmeister, 1886 and *Neuryurus* sp. Ameghino, 1889 (Xenarthra, Glyptodontidae)
Yumi Asakura, Paulo Victor Luiz Gomes Da Costa Pereira, Edison Vicente Oliveira, Jorge Luiz Lopes Da Silva 795

Human Palaeontology and Prehistory / Paléontologie humaine et préhistoire

(Prehistoric Archaeology / Archéologie préhistorique)

- Techno-économie et signification culturelle de l'occupation moustérienne supérieure de Baume-Vallée (Haute-Loire)
Erwan Vaissié, Vincent Delvigne, Jean-Philippe Faivre, Paul Fernandes, Alain Turq, Jean-Paul Raynal ... 804

Corrigendum

- Corrigendum to “First Mammal of Gondwanan lineage in the early Eocene of India” [C. R. Palevol, Kapur et al. 16 (2017), 721–737]
Vivesh V. Kapur, Debasis P. Das, Sunil Bajpai, Guntupalli V.R. Prasad 820