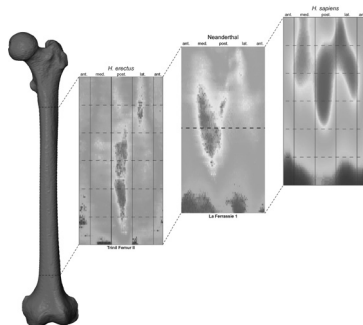


COMPTES RENDUS PALEVOL

Volume 16 (2017) – No. 5–6 – August–September



Cover illustration. Evolving endostructural signatures of the human femoral morphology. (L. Puymeraïl, original images.)

Illustration de la couverture. Évolution des signatures endostructurales de la morphologie fémorale humaine. (L. Puymeraïl, images originales.)

Thematic issue / Numéro thématique :

**Hominin biomechanics, virtual anatomy and inner structural morphology:
From head to toe. A tribute to Laurent Puymeraïl**

***Biomécanique, anatomie virtuelle et morphologie structurale interne des hominines :
de la tête aux pieds. Un hommage à Laurent Puymeraïl***

Guest editors / Rédacteurs en chef invités : **Roberto Macchiarelli & Clément Zanolli**

(Foreword / Avant-propos)

- Hominin biomechanics, virtual anatomy and inner structural morphology:
From head to toe. A tribute to Laurent Puymeraïl
Roberto Macchiarelli, Clément Zanolli 493
- A frontal lobe surface analysis in three archaic African human fossils: OH 9, Buia, and Bodo
Amélie Beudet, Emiliano Bruner 499
- Echoes from the past: New insights into the early hominin cochlea from a phylo-morphometric approach
**José Braga, Priscille Bouvier, Jordan Romeyer Dherbey, Patricia Balaesque, Laurent Risser,
Jean-Michel Loubes, Jean Dumoncel, Benjamin Duployer, Christophe Tenailleau** 508
- Inner structural organization of the distal humerus in *Paranthropus* and *Homo*
**Marine Cazenave, José Braga, Anna Oettlé, John Francis Thackeray, Frikkie de Beer, Jakobus Hoffman,
Metasebia Endalamaw, Blade Engda Redae, Laurent Puymeraïl, Roberto Macchiarelli** 521
- Does trabecular bone structure within the metacarpal heads of primates vary with hand posture?
Habiba Chirchir, Angel Zeininger, Masato Nakatsukasa, Richard A. Ketcham, Brian G. Richmond 533
- Assessing cranial plasticity in humans: The impact of artificial deformation on masticatory and basicranial
structures
Marion Cottin, Roman Hossein Khonsari, Martin Friess 545

Continued on the next page

Contents (continued)

• How the microstructure of dentine can contribute to reconstructing developing dentitions and the lives of hominoids and hominins Christopher Dean	557
• Was <i>Australopithecus afarensis</i> able to make the Lomekwian stone tools? Towards a realistic biomechanical simulation of hand force capability in fossil hominins and new insights on the role of the fifth digit Mathieu Domalain, Anne Bertin, Guillaume Daver	572
• Adaptation to bipedal gait and fifth metatarsal structural properties in <i>Australopithecus</i> , <i>Paranthropus</i> , and <i>Homo</i> Mark R. Dowdeswell, Tea Jashashvili, Biren A. Patel, Renaud Lebrun, Randall L. Susman, David Lordkipanidze, Kristian J. Carlson	585
• Finite element analysis of the cranium: Validity, sensitivity and future directions Ricardo Miguel Godinho, Viviana Toro-Ibache, Laura C. Fitton, Paul O'Higgins	600
• Functional morphology, biomechanics and the retrodiction of early hominin diets Frederick E. Grine, David J. Daegling	613
• Microevolution of outer and inner structures of upper molars in Late Pleistocene and Early Holocene humans Mona Le Luyer, Priscilla Bayle	632
• Morphological correlates of the first metacarpal proximal articular surface with manipulative capabilities in apes, humans and South African early hominins Damiano Marchi, Daniel J. Proctor, Emma Huston, Christina L. Nicholas, Florian Fischer	645
• A morphometric mapping analysis of lower fourth deciduous premolar in hominoids: Implications for phylogenetic relationship between <i>Nakalipithecus</i> and <i>Ouranopithecus</i> Wataru Morita, Naoki Morimoto, Yutaka Kunimatsu, Arnaud Mazurier, Clément Zanolli, Masato Nakatsukasa	655
• The principles and practice of human evolution research: Are we asking questions that can be answered? Richard J. Smith, Bernard Wood	670
• Patterns of humeral asymmetry among Late Pleistocene humans Vitale S. Sparacello, Sébastien Villotte, Laura L. Shackelford, Erik Trinkaus	680
• Cortical bone mapping: An application to hand and foot bones in hominoids Zewdi J. Tsegai, Nicholas B. Stephens, Graham M. Treece, Matthew M. Skinner, Tracy L. Kivell, Andrew H. Gee	690
• Is the deciduous/permanent molar enamel thickness ratio a taxon-specific indicator in extant and extinct hominids? Clément Zanolli, Priscilla Bayle, Luca Bondioli, M. Christopher Dean, Mona Le Luyer, Arnaud Mazurier, Wataru Morita, Roberto Macchiarelli	702