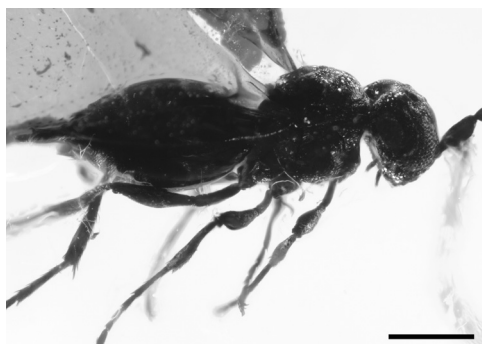


# COMPTES RENDUS PALEVOL

Volume 16 (2017) – No. 4 – June–July

---



*Cover illustration.* Holotype female (No. 855) of *Mymaropsis baabdaensis* sp. n. Scale bar: 200  $\mu$ m. For further details, see L. Krogmann et al., 2016. C. R. Palevol 15, 483–487.

*Illustration de la couverture.* Holotype femelle (n° 855) de *Mymaropsis baabdaensis* sp. n. Barre d'échelle : 200  $\mu$ m. Pour de plus amples informations, voir L. Krogmann et al., 2016. C. R. Palevol 15, 483–487.

---

## General Palaeontology, Systematics and Evolution / *Paléontologie générale, systématique et évolution*

### (Palaeobotany / *Paléobotanique*)

- Plant Resources from the Bronze Age and the first Iron Age in the northwestern arc of the Mediterranean Basin  
**Natàlia Alonso, Laurent Bouby** ..... 363

### (Invertebrate Paleontology / *Paléontologie des invertébrés*)

- A new hawkler dragonfly from the Middle Jurassic of China (Odonata: Aeshnoptera)  
**Stefan Pinkert, André Nel, Di-Ying Huang** ..... 378

### (Vertebrate Palaeontology / *Paléontologie des vertébrés*)

- First occurrence of Palaeotheriidae (Perissodactyla) from the late–middle Eocene of eastern Thrace (Greece)  
**Grégoire Métais, Sevket Sen** ..... 382
- Long bone histology of *Ophiacodon* reveals the geologically earliest occurrence of fibrolamellar bone in the mammalian stem lineage  
**Christen D. Shelton, Paul Martin Sander** ..... 397
- Dorsal rib histology of dinosaurs and a crocodylomorph from western Portugal: Skeletochronological implications on age determination and life history traits  
**Katja Waskow, Octavio Mateus** ..... 425

*Continued on the next page*

Contents (continued)

**Human Palaeontology and Prehistory / Paléontologie humaine et préhistoire**

- The exploitation of megafauna during the earliest peopling of the Americas: An examination of nineteenth-century fossil collections  
**Karina V. Chichkoyan, Bienvenido Martínez-Navarro, Anne-Marie Moigne, Margarita Belinchón, José L. Lanata** ..... 440
- Les restes humains de la grotte ornée paléolithique des Deux-Ouvertures (Ardèche, France)  
**Silvana Condemi, Jean-Luc Voisin, Laurent Puyménil, Julien Monney, Michel Philippe** ..... 452

**(Palaeoanthropology / Paléanthropologie)**

- The paleobiology of two adult skeletons from Baouso da Torre (Bausu da Ture) (Liguria, Italy): Implications for Gravettian lifestyle  
**Sébastien Villotte, Mathilde Samsel, Vitale Sparacello** ..... 462

**(Prehistoric Archaeology / Archéologie préhistorique)**

- Neanderthals and volcanic rocks. Opportunistic behaviour or optimized management?  
**Carmen Santagata, Marie-Hélène Moncel, Jean-Paul Raynal** ..... 474

**Book review / Analyse d'ouvrage**

- *Aux origines de la vie : une nouvelle histoire de l'évolution*, A. El Albani, R. Macchiarelli, A. Meunier. Dunod, Paris (2016). 221 p., 22,00 €  
**Michel Laurin** ..... 488