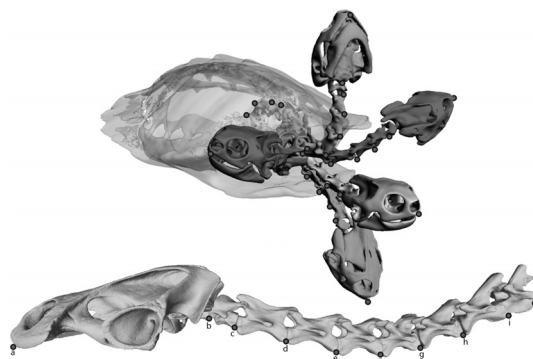


COMPTES RENDUS PALEVOL

Volume 15 (2016) – No. 5 – April–June



Cover illustration. Turtle neck positions and landmark definition. **Top:** Computer-assisted tomography scans of different neck positions combined for a cryptodire turtle, *Malaclemys centrata*, in frontolateral perspective view: blue, maximal dorsal flexion; gray, extended neck position; green, maximal ventral flexion; red, maximal lateral flexion; orange, maximal retracted neck. Indicated landmarks (red circles) correspond to the drawing below. **Bottom.** Landmarks illustrated for the pleurodire *Phrynops geoffroanus* (#1W935; SMF45470). The neck is arranged in neutral position, i.e. the articular facets of the adjacent zygapophyses fully overlap. For all neck positions, landmarks were taken in a two-dimensional plane of the neck. Artwork by Juliane Hinz (Tübingen) and Ingmar Werneburg. For further details, see I. Werneburg, 2015. C. R. Palevol 14, 527–548.

Illustration de la couverture. Positions de cou de tortues et définition des repères. **En haut.** Scans CT de différentes positions de cou d'une tortue cryptodire *Malaclemys centrata*, en perspective frontolatérale: en bleu, flexion dorsale maximale ; en gris, position du cou en extension ; en vert, flexion ventrale maximale ; en rouge, flexion latérale maximale ; en orange, cou en rétraction maximale. Les repères indiqués (points rouges) correspondent au dessin au-dessous. **En bas.** Repères pour la tortue pleurodire *Phrynops geoffroanus* (1W935, SMF45470). Le cou est présenté en position neutre, c'est-à-dire que les facettes articulaires des zygapophyses adjacentes se chevauchent complètement. Pour toutes les positions du cou, les repères ont été pris dans un plan bidimensionnel du cou. Iconographie par Julian Hinz et Ingmar Werneburg. Pour de plus amples informations, voir I. Werneburg, 2015. C. R. Palevol 14, 527–548.

General Palaeontology, Systematics and Evolution / Paléontologie générale, systématique et évolution

(Micropalaeontology / Micropaléontologie)

- Integrated radiolarian and conodont biostratigraphy of the Middle Permian Gufeng Formation (South China)
Qiangfen Ma, Qinglai Feng, Martial Caridroit, Taniel Danelian, Ning Zhang 453

(Invertebrate Palaeontology / Paléontologie des Invertébrés)

- First occurrence of the Ichnogenus *Selenichnites* from the Middle Jurassic Strata of the Skoura Syncline (Middle Atlas, Morocco); Palaeoecological and palaeoenvironmental context
Mostafa Oukassou, André Charrière, Abdelouahed Lagnaoui, Stacey Gibb, André Michard, Omar Saddiqi 461
- A new whale barnacle from the Early Pleistocene of Italy suggests an ancient right whale breeding ground in the Mediterranean
Alberto Collareta, Stefano Margiotta, Angelo Varola, Rita Catanzariti, Mark Bosselaers, Giovanni Bianucci 473
- *Mymaropsis baabdaensis* sp. n. from Lower Cretaceous Lebanese amber - the earliest spathiopterygid wasp and the first female known for the family
Lars Krogmann, Dany Azar, Hossein Rajaei, André Nel 483

Continued on the next page

Contents (continued)

(Vertebrate Palaeontology / Paléontologie des Vertébrés)

- A new dugong species (Sirenia, Dugongidae) from the Eocene of Catalonia (NE Iberian Peninsula)
Jordi Balaguer, David M. Alba 489
- Fossil bats from the Late Pleistocene site of the Aguilón P7 Cave (Zaragoza, Spain)
Julia Galán, Gloria Cuenca-Bescós, Juan Manuel López-García, Víctor Sauqué, Carmen Núñez-Lahuerta 501
- Late Miocene (Turolian, MN13) squirrels from Moncucco Torinese, NW Italy
Simone Colombero, Giorgio Carnevale 515

Human Palaeontology and Prehistory / Paléontologie humaine et préhistoire

(Palaeoanthropology / Paléoanthropologie)

- Investigating histomorphological variations in human cranial bones through ontogeny
Orosia García Gil, Oscar Cambra-Moo, Julia Audije Gil, Carmen Nacarino-Meneses, Miguel Ángel Rodríguez Barbero, Josefina Rascón Pérez, Armando González Martín 527
- The Neolithic Necropolis of La Feixa del Moro (Juberri, Andorra): New data on the first farming communities in the Pyrenees
Gerard Remolins, Juan F. Gibaja, Florence Alliése, María Fontanals, Patricia Martín, Alba Masclans, Niccolò Mazzucco, Millán Mozota, Monica Oliva, Xavier Oms, Francisco Javier Santos, Xavier Terradas, María Eulàlia Subira, Xavier Llovera 537
- Phylogenetic analysis of the calvaria of *Homo floresiensis*
Valéry Zeitoun, Véronique Barriol, Harry Widianto 555

(Prehistoric Archaeology / Archéologie préhistorique)

- Perforation techniques and traces of use on the Mesolithic adornments of the Trench Area at Cabeço da Amoreira Shellmidden (Muge, central Portugal)
Lino André, Nuno Bicho 569
- Neanderthal mobility and technological change in the northeastern of the Iberian Peninsula: The patterns of chert exploitation at the Abric Romaní rock-shelter
Andrea Picin, Eudald Carbonell 581

History of Sciences / Histoire des sciences

(History of Palaeontology / Histoire de la paléontologie)

- L'abbé Bacheley et la découverte des premiers dinosaures et crocodiliens marins dans le Jurassique des Vaches Noires (Callovien/Oxfordien, Normandie)
Arnaud Brignon 595

Book review / Analyse d'ouvrage

- Revue critique de *Paléobiogéographie*
Michel Laurin 607