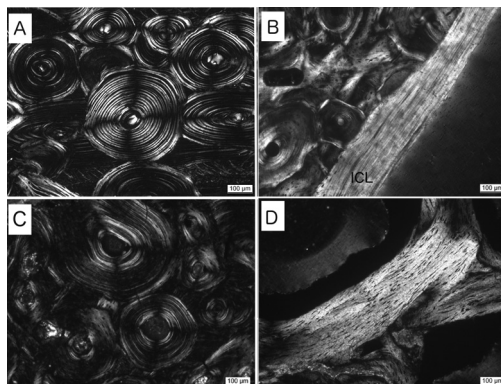


COMPTES RENDUS PALEVOL

Volume 15 (2016) – Nos. 1–2 – January



Cover illustration. Polarizing light microscopic images of lamellae in recent (A–B) and fossil (C–D) bone. A. Elephant humerus showing the distinctive alternating dark and light lamellar layers in secondary osteons. B. Giraffe tibia showing very bright inner circumferential layers (ICL) (also known as endosteal lamellae). C. Alternating pattern of bright and dark layers in secondary osteons of a long bone of nodosaurid *Hungarosaurus*. D. Bright secondary lamellae forming trabeculae of an indet. nodosaurid. For further details, see Jessica Mitchell and Anneke H. van Heteren, this issue, pp. 23–31.

Illustration de la couverture. Images au microscope polarisant de lamellae dans des os récents (A–B) et fossiles (C–D). A. Humérus d'éléphant montrant les feuillets de lamellae distincts, alternativement noirs et blancs dans les ostéones secondaires. B. Tibia de girafe montrant les feuillets internes circulaires très brillants (CL) (connus aussi en tant que lamellae endostéennes). C. Réseau à alternance de feuillets brillants et sombres dans des ostéones secondaires d'un os long de nodosauridé *Hungarosaurus*. D. Lamellae secondaires brillantes formant des trabécules chez un nodosauridé indéterminé. Pour davantage de détails, voir Jessica Mitchell et Anneke H. van Heteren, ce numéro, pp. 23–31.

Thematic issue / Numéro thématique

Current advances in paleohistology: A tribute to a generation of French paleohistologists

Progrès récents en paléohistologie : un hommage à une génération de paléohistologistes français

Guest Editors / Rédacteurs en chef invités : **Michel Laurin, Jorge Cubo**

• Progrès récents en paléohistologie : un hommage à une génération de paléohistologistes français Michel Laurin, Jorge Cubo	1
• History of the research group “Formations squelettiques” at the Paris-7 University (1968–2008) François J. Meunier, Lucas J. Legendre, Jorge Cubo, Armand de Ricqlès	9
• A literature review of the spatial organization of lamellar bone Jessica Mitchell, Anneke H. van Heteren	23
• The scaling of human osteocyte lacuna density with body size and metabolism Timothy G. Bromage, Yusuf M. Juwayeyi, Julia A. Katris, Santiago Gomez, Olexandra Ovsy, Justin Goldstein, Malvin N. Janal, Bin Hu, Friedemann Schrenk	32
• A hypothesis of differential secondary bone formation in dinosaurs Kevin Padian, Sarah Werning, John R. Horner	40
• Chondroid bone in dinosaur embryos and nestlings (Ornithischia: Hadrosauridae): Insights into the growth of the skull and the evolution of skeletal tissues Alida M. Bailleul, Catherine Nyssen-Behets, Benoît Lengelé, Brian K. Hall, John R. Horner	49
• Macroevolution of genome size in sarcopterygians during the water-land transition Chris Organ, Mikayla Struble, Aurore Canoville, Vivian de Buffrénil, Michel Laurin	65

Continued on the next page

Contents (continued)

• Early genome size increase in urodeles Michel Laurin, Aurore Canoville, Mikayla Struble, Chris Organ, Vivian de Buffrénil	74
• Scales, Enamel, Cosmine, Ganoine, and Early Osteichthyans Hans-Peter Schultze	83
• The discrepancy between morphological and microanatomical patterns of anamniotic stegocephalian postcrania from the Early Permian Briar Creek Bonebed (Texas) Dorota Konietzko-Meier, Christen D. Shelton, P. Martin Sander	103
• Microstructural features of the femur in early ophiacodontids: A reappraisal of ancestral habitat use and lifestyle of amniotes Michel Laurin, Vivian de Buffrénil	115
• Bone shell microstructure of <i>Condorchelys antiqua</i> Sterli, 2008, a stem turtle from the Jurassic of Patagonia Ignacio A. Cerda, Juliana Sterli, Torsten M. Scheyer	128
• Bone histology, microanatomy, and growth of the nothosauroid <i>Simosaurus gaillardoti</i> (Sauropterygia) from the Upper Muschelkalk of southern Germany/Baden-Württemberg Nicole Klein, Eva Maria Griebeler	142
• Bone histology and growth in <i>Stenaulorhynchus stockleyi</i> (Archosauromorpha: Rhynchosauria) from the Middle Triassic of the Ruhuhu Basin of Tanzania Sarah Werning, Sterling J. Nesbitt	163
• Mineralized tissues in dinosaurs interpreted as having formed through metaplasia: A preliminary evaluation John R. Horner, Holly N. Woodward, Alida M. Bailleul	176
• Preliminary assessment of bone histology in the extinct elephant bird <i>Aepyornis</i> (Aves, Palaeognathae) from Madagascar Armand de Ricqlès, Estelle Bourdon, Lucas J. Legendre, Jorge Cubo	197
• Enamel thickness and enamel growth in <i>Oreopithecus</i> : Combining microtomographic and histological evidence Clément Zanolli, Christopher Dean, Lorenzo Rook, Luca Bondioli, Arnaud Mazurier, Roberto Macchiarelli	209
• First approach of the life history of <i>Prolagus apricenicus</i> (Ochotonidae, Lagomorpha) from Terre Rosse sites (Gargano, Italy) using body mass estimation and paleohistological analysis Blanca Moncunill-Solé, Guillem Orlandi-Oliveras, Xavier Jordana, Lorenzo Rook, Meike Köhler	227
• Bone histology of the giant fossil dormouse <i>Hypnomys onicensis</i> (Gliridae, Rodentia) from Balearic Islands Guillem Orlandi-Oliveras, Xavier Jordana, Blanca Moncunill-Solé, Meike Köhler	238
• Surviving in a predator-free environment: Hints from a bone remodelling process in a dwarf Pleistocene deer from Crete Maria Rita Palombo, Marco Zedda	245
• Ontogenetic changes in the histological features of zonal bone tissue of ruminants: A quantitative approach Xavier Jordana, Nekane Marín-Moratalla, Blanca Moncunill-Solé, Carmen Nacarino-Meneses, Meike Köhler	255
• First approach to bone histology and skeletochronology of <i>Equus hemionus</i> Carmen Nacarino-Meneses, Xavier Jordana, Meike Köhler	267

À venir / Forthcoming

Investigating histomorphological variations in human cranial bones through ontogeny
Orosia García Gil, Oscar Cambra-Moo, Julia Audije Gil, Carmen Nacarino-Meneses, Miguel Ángel Rodríguez Barbero, Josefina Rascón Pérez, Armando González Martín [see C. R. Palevol, 15 (5)].