

An annotated checklist of the jumping plant-lice (Insecta: Hemiptera: Psylloidea) from the Mercantour National Park, with seven new records for France and one new synonymy

David OUVRARD

Department of Life Sciences, Natural History Museum,
Cromwell Road, London SW7 5BD (United Kingdom)
d.ouvrard@nhm.ac.uk

Daniel BURCKHARDT

Naturhistorisches Museum, Augustinergasse 2,
CH-4001 Basel (Switzerland)
daniel.burckhardt@bs.ch

Christian COCQUEMPOT

CBGP – INRA, 755 avenue d'Agropolis,
Campus International de Baillarguet, CS 30016,
34988 Montferrier-sur-Lez (France)
cocquemp@supagro.inra.fr

Published on 27 March 2015

urn:lsid:zoobank.org:pub:297BE7F3-2630-4438-BE98-9D60394EF50E

Ouvrard D., Burckhardt D. & Cocquempot C. 2015. — An annotated checklist of the jumping plant-lice (Insecta: Hemiptera: Psylloidea) from the Mercantour National Park, with seven new records for France and one new synonymy, in Daugeron C., Deharveng L., Isaia M., Villemant C. & Judson M. (eds), Mercantour/Alpi Maritime All Taxa Biodiversity Inventory. *Zoosystema* 37 (1): 251-271. <http://dx.doi.org/10.5252/z2015n1a13>

ABSTRACT

A total of 68 psyllid species are listed from the Mercantour National Park in Southeast France, where a targeted collecting campaign was conducted between 2009 and 2012, as part of the project “ATBI+M” Mercantour. The insects were collected using Malaise traps, flight intercept traps and sweep nets to sample in the vegetation. Additional information on distribution, biology and host-plants is provided for each species. Seven species are recorded for the first time from France: *Craspedolepta artemisiae* (Foerster, 1848), *Craspedolepta nebulosa* (Zetterstedt, 1828), *Cacopsylla propinqua* (Schaefer, 1949), *Cyamophila probaskai* (Priesner, 1927), *Eryngiofaga* cf. *refuga* (Loginova, 1966), *Bactericera parastriola* Conci, Ossiannilsson & Tamanini, 1988 and *Trioza flixiana* Burckhardt & Lauterer, 2002. *Trioza* (*Trioza*) *rapisardai* Conci & Tamanini, 1984 is a new subjective synonym of *Trioza brachyceraea* Hodkinson & White, 1979, which was previously known only from the male holotype. The abundance, distribution and introduction status of some species are discussed.

KEY WORDS

Psyllids,
Sternorrhyncha,
faunistics,
host plants,
France,
Alps,
new records.

RÉSUMÉ

Liste annotée des psylles (Insecta: Hemiptera: Psylloidea) du Parc national du Mercantour, incluant sept espèces nouvelles pour la France et une nouvelle synonymie.

Un total de 68 espèces de psylles est rapporté du Parc national du Mercantour dans le Sud-Est de la France, où a eu lieu une campagne ciblée de collecte entre 2009 et 2012, dans le cadre du projet “ATBI+M” Mercantour. Les insectes furent collectés à l’aide de pièges Malaise, de pièges d’interception et au filet fauchoir dans la végétation. Des données supplémentaires sur la distribution, la biologie et les plantes-hôtes sont fournies pour chaque espèce. Sept espèces sont nouvelles pour la France: *Craspedolepta artemisiae* (Foerster, 1848), *Craspedolepta nebulosa* (Zetterstedt, 1828), *Cacopsylla propinqua* (Schaefer, 1949), *Cyamophila prohaskai* (Priesner, 1927), *Eryngiofaga cf. refuga* (Loginova, 1966), *Bactericera parastriola* Conci, Ossiannilsson & Tamanini, 1988 et *Trioza flixiana* Burckhardt & Lauterer, 2002. *Trioza* (*Trioza*) *rapisardai* Conci & Tamanini, 1984 est un nouveau synonyme de *Trioza brachyceraea* Hodkinson & White, 1979, connu jusqu’à présent de l’holotype mâle uniquement. L’abondance, la distribution et le statut d’espèce introduite sont aussi considérés pour quelques espèces.

MOTS CLÉS
 Psylles,
 Sternorrhyncha,
 faunistique,
 plantes-hôtes,
 France,
 Alpes,
 signalisations nouvelles.

INTRODUCTION

Psylloidea, or jumping plant-lice, are small sap-sucking insects with a world-wide distribution, found on a large variety of plants. Whereas the vast majority of the c. 3900 described species do not seem to have a major impact on their host-plant, a few are economically important pests on crops or ornamental trees.

From a historical point of view, the oldest citation of an adult psyllid and the first mention of a higher taxonomic rank (despite being from pre-Linnean times) for psyllids was made in France by the entomologist Réaumur in 1737, who observed *Homotoma ficus* (Linnaeus, 1758) and *Psylla buxi* (Linnaeus, 1758) in his garden near Paris (Charenton).

The Palaearctic fauna has been thoroughly studied for more than 250 years, and lists have been published for several countries or regional areas, but never for France. Seljak *et al.* (2008) consider the list of psyllids as nearly complete for Central Europe, but this is far from being true for Western Europe. However, a list of 169 species for France is available from the Fauna Europaea website (Burckhardt 2004), and has served as our reference list for the psyllids of France, with a few exceptions mentioned in the text. Full synonymies are not given here, since all taxonomic information can be found in the Psyl’list online database (Ouvrard 2014).

Nine psyllid species have been previously reported from the Alpes-Maritimes department in previous publications: *Camarotoscena speciosa* (Flor, 1861) in Cotte (1915), *Euphyllura olivina* (Costa, 1839) in Balachowsky & Mesnil (1935) and Peragallo (1881), *Livia juncei* (Schrank, 1789) and *Psylla alni* (Linnaeus, 1758) in Risso (1826), *Psyllopsis fraxini* (Linnaeus, 1758) in Béguinot (2002) and Cotte (1915), *Trichochermes walkeri* (Foerster, 1848), *Trioza centranthi* (Vallot, 1829) and *Trioza kiefferi* Giard, 1902 in Béguinot (2002) and *Trioza rumicis* Löw, 1880 in Cotte (1915).

With the exception of two species in the online ATBI database (<http://www.atbi.eu/mercantour-maritime/?q=node/481>), namely *Calophya rhois* (Löw, 1877) and *Trioza centranthi* (Vallot, 1829), no psyllids have been reported from the

Mercantour National Park before, and only *Livilla pyrenaica* (Mink, 1859) has been reported from the Alpi Marittime National Park (Conci & Tamanini 1988). The situation is different for the rest of the Alps, where many species are recorded from the Austrian (Wagner & Franz 1961), Swiss (Burckhardt 1983; Burckhardt *et al.* 2007: 47 species from a relatively small area in eastern Switzerland) and Italian (Tamanini 1977; Rapisarda & Conci 1989; Conci *et al.* 1993, 1996) parts.

The full list of collected and identified psyllids is given, together with collecting data, a report of the known distribution of each species and comments concerning the available descriptions and elements of the biology (including host-plants) of each species.

MATERIAL AND METHODS

From 8 June 2009 to 15 October 2010, 697 (288 males and 409 females) psyllid specimens were collected in 92 Malaise traps and 46 interception traps set up in different locations and at two different altitudes (around 1400 and 2000 m) in the Mercantour National Park (Deharveng *et al.* 2015), as part of the project “ATBI+M” Mercantour dedicated to the inventory and monitoring of the whole biodiversity in the area (more information available at: <http://www.atbi.eu/mercantour-maritime/>).

All samples collected during the “Terrestrial Invertebrates fieldwork module” of the ATBI Mercantour project were labelled using a coding system where “M” refers to Mercantour, “9” or “10” indicates the sampling year, “BOR”, “SES” or “CAI” the sampling area, “1400/1500 or 2000” the sampling altitude, T1 to T8 the sequence of the successive sampling periods, “M1 or M2” the Malaise traps and “IN” the interception traps. Detailed information on the trap locations and geographic coordinates, the sampling periods and the main vegetation present at the sampling sites are given in Table 1. The codes and corresponding dates of the successive sampling periods for each sampling site are given in Table 2.

TABLE 1. — Sample codes and general information on the location of the sampling sites (all in Alpes-Maritimes, 06), their main vegetation and the sampling period.

Year	Sample codes	Commune	Locality	Vegetation	Altitude	Longitude	Latitude	Sampling period	Nb of samples
2009	M09-BOR1400 M1 & IN	St-Martin-Vésubie	Le Boréon	Meadows and spruce forest	1540	7.2871439	44.1146875	11.VI-15.X	8 (T1-T8)
2009	M09-BOR1400 M2	St-Martin-Vésubie	Le Boréon	Meadows and spruce forest	1549	7.2890533	44.1143415	11.VI-15.X	8 (T1-T8)
2009	M09-BOR2000 M1	Valdeblore	Col de Salèse	Meadows, Rhododendrons, larch and spruce forest	2058	7.23698	44.13734	10.VI-15.X	8 (T1-T8)
2009	M09-BOR2000 M2	Valdeblore	Col de Salèse	Larch forest	2032	7.2352837	44.1388598	10.VI-15.X	8 (T1-T8)
2009	M09-BOR2000 IN	Valdeblore	Col de Salèse	Larch forest	2047	7.2365699	44.1372935	10.VI-15.X	8 (T1-T8)
2009	M09-SES1400 M1	St-Dalmas-le-Selvage	Vallon de St-Dalmas: La Buisse	Meadows, broadleaved and larch forest	1437	6.8875257	44.2848357	9.VI-15.X	8 (T1-T8)
2009	M09-SES1400 M2	St-Dalmas-le-Selvage	Vallon de St-Dalmas: La Buisse	Meadows, broadleaved and larch forest	1421	6.8867683	44.2850731	9.VI-15.X	8 (T1-T8)
2009	M09-SES1400 IN	St-Dalmas-le-Selvage	Vallon de St-Dalmas: La Buisse	Meadows, broadleaved and larch forest	1436	6.8876092	44.2847834	9.VI-15.X	8 (T1-T8)
2009	M09-SES2000 M1	St-Dalmas-le-Selvage	Bois de Sestrière	Larch forest	1966	6.8240421	44.2927562	8.VI-15.X	8 (T1-T8)
2009	M09-SES2000 M2	St-Dalmas-le-Selvage	Bois de Sestrière	Larch forest	2011	6.8228732	44.2925219	8.VI-15.X	8 (T1-T8)
2009	M09-SES2000 IN	St-Dalmas-le-Selvage	Bois de Sestrière	Larch forest	1995	6.8235944	44.2926706	8.VI-15.X	8 (T1-T8)
2010	M10-CAI1400 M1 & IN	Saorge	Forêt de Caïros: Vallerasse	Fir forest	1379	7.45615	44.00338	1.VII-15.X	7 (T1-T7)
2010	M10-CAI1400 M2	Saorge	Forêt de Caïros: Vallerasse	Fir forest	1387	7.45692	44.00343	1.VII-15.X	7 (T1-T7)
2010	M10-CAI1400 IN	Saorge	Forêt de Caïros: Vallerasse	Fir forest	1398	7.45577	44.00344	1.VII-15.X	7 (T1-T7)
2010	M10-CAI2000 M1	Saorge	Tête de la Poudrière	Larch forest	1953	7.42407	44.01454	30.VI-15.X	7 (T1-T7)
2010	M10-CAI2000 M2	Saorge	Tête de la Poudrière	Larch forest	1992	7.42459	44.01388	30.VI-15.X	7 (T1-T7)
2010	M10-CAI2000 IN	Saorge	Tête de la Poudrière	Larch forest	1985	7.42467	44.01400	30.VI-15.X	7 (T1-T7)

TABLE 2. — Codes and dates of the successive sampling periods for each sampling site.

Year	Site	T1	T2	T3	T4	T5	T6	T7	T8	T9
2009	BOR1400	11.VI-24.VI	24.VI-9.VII	9.VII-24.VII	24.VII-13.VIII	13.VIII-27.VIII	27.VIII-18.IX	18.IX-5.X	5.X-15.X	no sample
2009	BOR2000	10.VI-24.VI	24.VI-9.VII	9.VII-24.VII	24.VII-13.VIII	13.VIII-27.VIII	27.VIII-18.IX	18.IX-5.X	5.X-15.X	no sample
2009	SES1400	9.VI-30.VI	30.VI-10.VII	10.VII-23.VII	23.VII-7.VIII	7.VIII-19.VIII	19.VIII-22.IX	22.IX-7.X	7.X-15.X	no sample
2009	SES2000	8.VI-24.VI	24.VI-10.VII	10.VII-23.VII	23.VII-7.VIII	7.VIII-19.VIII	19.VIII-22.IX	22.IX-7.X	7.X-15.X	no sample
2010	CAI1400	1.VII-16.VII	16.VII-31.VII	31.VII-16.VIII	16.VIII-30.VIII	30.VIII-15.IX	15.IX-30.IX	30.IX-15.X	no sample	no sample
2010	CAI2000	30.VI-16.VII	16.VII-31.VII	31.VII-16.VIII	16.VIII-30.VIII	30.VIII-15.IX	15.IX-30.IX	30.IX-15.X	no sample	no sample

In addition, the third author (CC) has made several collecting trips to the Mercantour National Park (June 1994, 2 and 4 July 2008; 9, 13, 16-23 July 2009; 8-15 July 2011). A few specimens collected in 2012 by Jean-Claude Streito (INRA, Montpellier) are also reported, as well as specimens collected by Igor Malenovský (Moravian Museum, Brno, Czech Republic) between 1994 and 1996. All specimens were caught by sweeping low vegetation or beating branches of bushes and trees.

In addition to the reference list of Fauna Europaea, the present data have been cross-checked with the dataset of the “Inventaire National du Patrimoine Naturel” (INPN: <http://inpn.mnhn.fr/accueil/index>) for the completeness of data from France, and with both the GBIF portal (<http://data.gbif.org>) and the Psyl’list database (Ouvrard 2014) for the world-wide distribution.

The higher classification follows Burckhardt & Ouvrard (2012).

The Plant List (<http://www.theplantlist.org/>) has been used as the reference for the plant scientific names.

ABBREVIATIONS

Institutions

BMNH	Natural History Museum, London;
CBGP	Centre de biologie pour la Gestion des Populations, Montpellier;
MHNG	Muséum d'Histoire naturelle de Genève;
MMBC	Moravian Museum, Brno, Czech Republic;
MNHN	Muséum national d'Histoire naturelle, Paris;
NHMB	Naturhistorisches Museum, Basel.

SYSTEMATICS

Superfamily PSYLLOIDEA Latreille, 1807

Family APHALARIDAE Löw, 1879

Subfamily APHALARINAE Löw, 1879

Genus *Aphalara* Foerster, 1848

Aphalara sauteri Burckhardt, 1983

Aphalara sauteri Burckhardt, 1983: 47.

MATERIAL EXAMINED. — France. Alpes-de-Haute-Provence, Fours, Bois de la Tellière, 1420 m, 44°19'5.415"N-6°37'52.8996"E, 01.IX.2012 C. Cocquempot (CBGP), 1 adult; Alpes-Maritimes, Bolène-Vesubie, massif de la cime du Diable, 1800-2600 m, 28.VIII.1995, 1♂ I. Malenovský (MMBC); Alpes-Maritimes, La Brigue, French-Italian border between Mt Grai (2013 m) and Cime de Marte (2135 m), 21.VIII.1996, 1♀, I. Malenovský (MMBC).

DISTRIBUTION. — Fauna Europaea: Austria, France, Italy (mainland + Sardinia), Slovakia, Spain, Switzerland; INPN: no data; additional data from Psyl'list: Slovenia.

COMMENTS

Description and biology in Burckhardt & Lauterer (1997). Host-plant: *Rumex scutatus* L. (Polygonaceae).

Genus *Craspedolepta* Enderlein, 1921

Craspedolepta artemisiae (Foerster, 1848)

Aphalara artemisiae Foerster, 1848: 96.

MATERIAL EXAMINED. — France. Alpes-de-Haute-Provence, Fours, Bayasse, 1790 m, 44°18'39.366"N-6°44'23.0022"E, 11.VII.2011, on *Artemisia* sp., C. Cocquempot (CBGP), 102 adults.

DISTRIBUTION. — Fauna Europaea: Bulgaria, Czech Republic, Germany, Moldova, Poland, Romania, Russia Central, Slovakia, Spain (doubtful), Ukraine; INPN: no data; additional data from Psyl'list: Hungary.

COMMENTS

Description in Wagner (1947), Vondráček (1957), Loginova (1963), Klimaszewski (1983) and Konovalova (1988). Biology unknown. Host-plant: *Artemisia campestris* L. (Asteraceae). New for France.

Craspedolepta malachitica (Dahlbom, 1851)

Psylla malachitica Dahlbom, 1851: 177.

MATERIAL EXAMINED. — France. Alpes-Maritimes, Saint-Dalmas-de-Tende, Refuge Neige et Merveilles, 1545 m, 44°4'12.0318"N-7°30'44.064"E, 17.VII.2009, on *Artemisia* sp. C. Cocquempot (CBGP), 43 adults; Alpes-Maritimes, Tende, Les Mesches, 1450 m, 10.VII.1994, 14♂, 5♀, I. Malenovský (MMBC).

DISTRIBUTION. — Fauna Europaea: Austria, Czech Republic, Finland, France, Germany, Great Britain, Italy, Moldova, Norway, Poland, Romania, Russia, Slovakia, Sweden, Switzerland, Ukraine; INPN: no data; additional data from Psyl'list: Armenia, Georgia, Kazakhstan, Mongolia.

COMMENTS

Description in Hodkinson & White (1979a) and Ossiannilsson (1992). Biology in Conci *et al.* (1993) and Ossiannilsson (1992). Host-plants: *Artemisia absinthium* L. and *A. maritima* Ledeb. (Asteraceae).

Craspedolepta nebulosa (Zetterstedt, 1828)

Chermes nebulosa Zetterstedt, 1828: 551.

MATERIAL EXAMINED. — France. Alpes-Maritimes, Lantosque, Col d'Andrion (Col du Fort), 1990 m, 44°1'3.8202"N-7°15'12.1206"E, 13.VII.2009, on *Epilobium angustifolium* L., C. Cocquempot (CBGP), 48 adults.

DISTRIBUTION. — Fauna Europaea: Austria, Czech Republic, Denmark, Finland, Germany, Great Britain, Italy, Moldova, Norway, Poland, Romania, Russia, Slovakia, Sweden, Switzerland, Ukraine; INPN: no data; additional data from Psyl'list: Canada, Ireland, Kazakhstan, United States of America (Alaska, California, Colorado, New Hampshire, Washington).

COMMENTS

Description in Hodkinson & White (1979a) and Ossiannilsson (1992). Biology in Ossiannilsson (1992), Conci *et al.* (1993) and Lauterer (1993). Host-plant: *Epilobium angustifolium* L. (Onagraceae). New for France.

Craspedolepta nervosa (Foerster, 1848)

Aphalara nervosa Foerster, 1848: 90.

MATERIAL EXAMINED. — France. Alpes-Maritimes, Saint-Martin-Vesubie, M09-BOR1400-T2-M2, 1♂ (BMNH); same locality, M09-BOR1400-T1-M1, 2♀ (MNHN); Alpes-Maritimes, Saint-Dalmas-le-Selvage, M09-SES1400-T1-IN, 1♀ (BMNH); same locality, M09-SES1400-T1-M1, 1♂ (MNHN); Alpes-de-Haute-Provence, Larche, Vallon du Lauzanier, val Fourane, 1923 m, 44°24'54.5004"N-6°53'10.4166"E, 12.VII.2011, C. Cocquempot (CBGP), 6 adults; Alpes-Maritimes, Moulinet, Col de Turini, piste de Gasta-Fume, 1625 m, 43°58'27.1482"N-7°23'42.7374"E, 02.VII.2008, C. Cocquempot (CBGP), 18 adults.

DISTRIBUTION. — Fauna Europaea: Austria, Belgium, Czech Republic, Denmark, Finland, France, Germany, Great Britain, Ireland, Italy, Moldova, Norway, Poland, Romania, Russia, Slovakia, Sweden,

Switzerland, The Netherlands, Ukraine; INPN: no data; additional data from Psyl'list: Hungary, Iraq, Mongolia, Slovenia.

COMMENTS

Description in Hodkinson & White (1979a) and Ossianilsson (1992). Biology in Conci *et al.* (1993). Host-plants: several species of *Achillea* (Asteraceae).

Subfamily RHINOCOLINAE Vondráček, 1957
Genus *Lisronia* Loginova, 1976

Lisronia varicicosta (Hodkinson & Hollis, 1981)

Rhachistoneura varicicosta Hodkinson & Hollis, 1981: 66.

MATERIAL EXAMINED. — France. Alpes-Maritimes, Saorge, M10-CAI2000-T1-M2, 1♀ (MNHN).

DISTRIBUTION. — Fauna Europaea: France, Greece, Italy (mainland + Sardinia + Sicily), Portugal, Spain (Balearic Is.), North Africa; INPN: no data; additional data from Psyl'list: Algeria, Israel.

COMMENTS

Description in Hodkinson & Hollis (1981) and Rapisarda (1987). Biology in Conci *et al.* (1993). Host-plants: several species of *Cistus* and *Tuberana lignosa* (Sweet) Samp. (Cistaceae).

Genus *Rhinocola* Foerster, 1848

Rhinocola aceris (Linnaeus, 1758)

Chermes aceris Linnaeus, 1758: 454.

MATERIAL EXAMINED. — France. Alpes-Maritimes, Saint-Dalmas-le-Selvage, M09-SES1400-T2-M2, 1♂ (MNHN); Alpes-de-Haute-Provence, Entraunes, Oustamura, 1360 m, 44°11'37.8528"N-6°44'27.6144"E, 14.VII.2011, on *Acer* sp., C. Cocquempot (CBGP), 2 adults; Alpes-de-Haute-Provence, Entraunes, Piste de la Cascade de l'Aiglière, 1420 m, 44°12'24.9732"N-6°44'33.4782"E, 14.VII.2011, on *Acer* sp., C. Cocquempot (CBGP), 6 adults; Alpes-de-Haute-Provence, Colmars-les-Alpes, Piste de Ratéry, 1670 m, 44°11'16.5804"N-6°39'15.4548"E, 10.VII.2011, on *Acer* sp., C. Cocquempot (CBGP), 1 adult; Alpes-Maritimes, Saint-Dalmas-de-Tende, Refuge Neige et Merveilles, 1545 m, 44°4'12.0318"N-7°30'44.064"E, 16.VII.2009, on *Acer* sp., C. Cocquempot (CBGP), 53 adults.

DISTRIBUTION. — Fauna Europaea: Austria, Belgium, Bulgaria, Czech Republic, Denmark, Finland, France, Germany, Great Britain, Greece, Italy (mainland + Sicily), Moldova, Norway, Poland, Romania, Russia, Slovakia, Slovenia, Sweden, Switzerland, Ukraine; INPN: no data; additional data from Psyl'list: Armenia, Baltic States, Caucasus, Georgia, Hungary, Tunisia, Turkey.

COMMENTS

Description in Hodkinson & White (1979a) and Ossianilsson (1992). Biology in Conci *et al.* (1993) and Lauterer (2011). Host-plants: several species of *Acer* (Aceraceae).

Subfamily SPONDYLIASPIDINAE Schwarz, 1898
Genus *Ctenarytaina* Ferris & Klyver, 1932

Ctenarytaina eucalypti (Maskell, 1890)

Rhinocola eucalypti Maskell, 1890: 160.

MATERIAL EXAMINED. — France. Alpes-Maritimes, Saint-Dalmas-le-Selvage, M09-SES1400-T1-M2, 2♂ (MNHN, BMNH).

DISTRIBUTION. — Fauna Europaea: France, Germany, Great Britain, Ireland, Italy, Portugal (mainland + Madeira), Spain (mainland + Canary Is.), Switzerland, Afro-tropical region, Australian region, Neotropical region, Oriental region; INPN: no data; additional data from Psyl'list: Australia, Bolivia, Brazil, Chile, Colombia, New Zealand, Papua New Guinea, Portugal (Azores), South Africa, Sri Lanka, United States of America (California).

COMMENTS

Description in Hodkinson & White (1979a). Biology in Burckhardt (1994a, 1998). Biological control review in Queiroz *et al.* (2012). Native to Australia, including Tasmania. Reported from France as early as 1925 (Mercier & Poisson 1926). Host-plants: several species of *Eucalyptus* (Myrtaceae).

Family CALOPHYIDAE Vondráček, 1957
Subfamily CALOPHYINAE Vondráček, 1957
Genus *Calophya* Löw, 1879

Calophya rhois (Löw, 1877)

Psylla rhois Löw, 1877: 148.

MATERIAL EXAMINED. — France. Alpes-Maritimes, Saorge, Route du Caïros, 604 m, 43°59'49.1064"N-7°30'22.9602"E, 20.VII.2009, on *Rhus cotinus* L. [= *Cotinus coggygria* Scop.], C. Cocquempot (CBGP), 54 adults.

DISTRIBUTION. — Fauna Europaea: Austria, Bulgaria, Czech Republic, France, Great Britain, Greece, Italy, Moldova, Romania, Slovenia, Spain, Ukraine. East Palaearctic, Near East; INPN: observed in 2009 in Mercantour National Parc (data ATBI Mercantour; square 10 km L93E106N633); additional data from Psyl'list: China, Georgia, Hungary, Russia, Serbia, Turkey.

COMMENTS

Description in Hodkinson & White (1979a). Biology in Conci *et al.* (1996). Host-plant: *Cotinus coggygria* Scop. (Anacardiaceae).

Family LIVIIDAE Löw, 1879
Subfamily EUPHYLLURINAE Crawford, 1914
Genus *Psyllopsis* Löw, 1879

Psyllopsis fraxini (Linnaeus, 1758)

Chermes fraxini Linnaeus, 1758: 454.

MATERIAL EXAMINED. — France. Alpes-de-Haute-Provence, Colmars-les-Alpes, 1350 m, 44°11'12.8472"N-6°38'4.6896"E, 10.VII.2011, on *Fraxinus* sp., C. Cocquempot (CBGP), 1 adult; Alpes-Maritimes, Saorge, L'Abéon, 1266 m, 43°59'39.3288"N-7°29'14.355"E,

20.VII.2009, on *Fraxinus* sp., C. Cocquempot (CBGP), 16 adults; Alpes-de-Haute-Provence, Entraunes, Piste de la Cascade de l'Aiglière, 1420 m, 44°12'24.9732"N-6°44'33.4782"E, 14.VII.2011, on *Fraxinus* sp., C. Cocquempot (CBGP), 1 adult; Alpes-de-Haute-Provence, Entraunes, Le Clôt, 1324 m, 44°11'47.0724"N-6°44'40.9878"E, 11.VII.2011, C. Cocquempot (CBGP), 1 adult.

DISTRIBUTION. — Fauna Europaea: Austria, Belgium, Czech Republic, Denmark, Finland, France, Germany, Great Britain, Ireland, Italy (mainland + Sicily), Moldova, Norway, Poland, Romania, Russia, Slovakia, Slovenia, Spain, Sweden, Switzerland, The Netherlands, Ukraine; INPN: no data; additional data from Psyl'list: Australia (Tasmania), Hungary, Iran, New Zealand, Slovenia, United States of America (New York), West Himalaya (Uttaranchal = Uttarakhand).

COMMENTS

Description in Hodkinson & White (1979a), Conci & Taminini (1990) and Ossiannilsson (1992). Biology in Ossiannilsson (1992) and Conci *et al.* (1993). Host-plants: several species of *Fraxinus* (Oleaceae).

Psyllopsis fraxinicola (Foerster, 1848)

Psylla fraxinicola Foerster, 1848: 73.

MATERIAL EXAMINED. — **France.** Alpes-Maritimes, Saint-Dalmas-le-Selve, M09-SES1400-T2-M2, 1♂ (MNHN); Alpes-Maritimes, Saint-Dalmas-de-Tende, Refuge Neige et Merveilles, 1545 m, 44°4'12.0318"N-7°30'44.064"E, 16.VII.2009, on *Fraxinus* sp., C. Cocquempot (CBGP), 49 adults; Alpes-Maritimes, Saorge, L'Abéon, 1266 m, 43°59'39.3288"N-7°29'14.355"E, 20.VII.2009, on *Fraxinus* sp., C. Cocquempot (CBGP), 81 adults; Alpes-de-Haute-Provence, Entraunes, Piste de la Cascade de l'Aiglière, 1420 m, 44°12'24.9732"N-6°44'33.4782"E, 14.VII.2011, on *Fraxinus* sp., C. Cocquempot (CBGP), 2 adults.

DISTRIBUTION. — Fauna Europaea: Austria, Belgium, Czech Republic, Denmark, Finland, France, Germany, Great Britain, Greece, Ireland, Italy (mainland + Sardinia + Sicily), Malta, Moldova, Norway, Poland, Romania, Slovakia, Spain, Sweden, Switzerland, The Netherlands, Ukraine; INPN: no data; additional data from Psyl'list: Algeria, Armenia, Australia, Canada (British Columbia, Nova Scotia), Georgia, Hungary, Kazakhstan, Lithuania, New Zealand, Slovenia, Turkey, United States of America (California, Connecticut, Idaho, New Jersey, Utah, Washington DC).

COMMENTS

Description in Hodkinson & White (1979a), Conci & Taminini (1990a) and Ossiannilsson (1992). Biology in Ossiannilsson (1992) and Conci *et al.* (1993). Host-plants: *Fraxinus dipetala* Hook. & Arn. (North America), *Fraxinus excelsior* L. and *Fraxinus ornus* L. (Oleaceae).

Family PSYLLIDAE Latreille, 1807

Subfamily ACIZZIINAE White & Hodkinson, 1985

Genus *Acizzia* Heslop-Harrison, 1961

Acizzia uncatoides (Ferris & Klyver, 1932)

Psylla uncatoides Ferris & Klyver, 1932: 53.

MATERIAL EXAMINED. — **France.** Alpes-Maritimes, Saint-Dalmas-le-Selve, M09-SES1400-T2-M2, 1♀ (MNHN); Alpes-Maritimes,

Saint-Dalmas-de-Tende, Lac de la Muta, 2365 m, 44°2'57.2742"N-7°26'5.694"E, 18.VII.2009, C. Cocquempot (CBGP), 12 adults; Alpes-Maritimes, Saint-Dalmas-de-Tende, Lac de Trem, 2270 m, 44°3'5.0472"N-7°26'36.8622"E, 18.VII.2009, C. Cocquempot (CBGP), 8 adults; Breil-sur-Roya, Authion, vacherie de l'Ortiguier, 1960 m, 43°59'40.6284"N-7°26'1.0536"E, on *Larix decidua*, 20.VII.2009, C. Cocquempot (CBGP), 1 adult; Alpes-Maritimes, Saorge, Forêt de Caïros, M10-CAI2000-T1-M2, 1♂ (MNHN); Alpes-Maritimes, La Brigue, French-Italian border between Mt Grai (2013 m) and Cime de Marte (2135 m), 21.VIII.1996, 7♂, 3♀, I. Malenovský (MMBC).

DISTRIBUTION. — Fauna Europaea: France, Italy (mainland + Sicily), Malta, Portugal (mainland + Azores), Spain (Canary Islands), ex-Yugoslavia; INPN: no data; additional data from Psyl'list: Algeria, Australia, Chile, Colombia, France (Guadeloupe), Great Britain, Israel, Lebanon, Mexico, Montenegro, New Zealand, United States of America (California, Hawaii).

COMMENTS

Description in Hodkinson & Hollis (1987). Introduced and established in France, reported for the first time in 1976 (Bain *et al.* 1976). Native to Australia. Host-plants are species of *Acacia* and *Albizia* (Fabaceae). In France, it has been collected on *Acacia baileyana* F. Muell. Populations of *A. uncatoides* undergo 6 to 8 generations per year in Italy (Conci *et al.* 1996).

Subfamily PSYLLINAE Latreille, 1807

Genus *Baeopelma* Enderlein, 1926

Baeopelma foersteri (Flor, 1861)

Psylla foersteri Flor, 1861: 458.

MATERIAL EXAMINED. — **France.** Alpes-Maritimes, Lantosque, Saint-Colomban, Camari, 897 m, 43°57'7.9956"N-7°20'52.5906"E, 04.VII.2008, on *Alnus* sp., C. Cocquempot (CBGP), 3 adults.

DISTRIBUTION. — Fauna Europaea: Austria, Belgium, Bulgaria, Czech Republic, Denmark, Finland, France, Germany, Great Britain, Greece, Ireland, Italy (mainland + Sardinia + Sicily), Moldova, Norway, Poland, Romania, Russia, Slovakia, Slovenia, Spain, Sweden, Switzerland, The Netherlands, Ukraine; INPN: no data; additional data from Psyl'list: Algeria, Caucasus, Hungary, Lebanon, Turkey.

COMMENTS

Description in Hodkinson & White (1979a) and Ossiannilsson (1992). Biology in Ossiannilsson (1992) and Conci *et al.* (1993). Host-plants: *Alnus incana* (L.) Moench and *A. glutinosa* (L.) Gaertn. (Betulaceae).

Genus *Cacopsylla* Ossiannilsson, 1970

Cacopsylla albipes (Flor, 1861)

Psylla albipes Flor, 1861: 364.

MATERIAL EXAMINED. — **France.** Alpes-Maritimes, Saorge, M10-CAI1400-T5-M2, 1♀ (MNHN); same locality, M10-CAI2000-T1-M1, 1♀ (BMNH); Alpes-Maritimes, Bolène-Vesubie, massif de la cime du Diable, 1800-2600 m, 28.VIII.1995, 1♂, I. Malenovský (MMBC).

DISTRIBUTION. — Fauna Europaea: Austria, France, Germany, Great Britain, Italy, Poland, Slovakia, Switzerland, Ukraine; INPN: no data; additional data from Psyl'list: Bulgaria, Crimea, Czech Republic, Georgia, Slovenia, Turkey.

COMMENTS

Description in Hodkinson & White (1979a), Vondráček (1957), Burckhardt (2010). Biology in Conci *et al.* (1993). Host-plants: several species of *Sorbus* (Rosaceae).

Cacopsylla ambigua (Foerster, 1848)

Psylla ambigua Foerster, 1848: 74.

MATERIAL EXAMINED. — France. Alpes-Maritimes, Saint-Martin-Vésubie, M09-BOR1400-T1-M2, 1♀ (MNHN); Alpes-Maritimes, Valdeblore, M09-BOR2000-T2-M1, 2♀ (MNHN, BMNH); Alpes-de-Haute-Provence, Larche, Malboisset, 1700 m, 44°24'42.5298"N-6°51'26.5752"E, 12.VII.2011, on *Salix* sp., C. Cocquempot (CBGP), 33 adults; Alpes-Maritimes, Castérino, Pont des Gasis, 1540 m, 44°5'19.8276"N-7°30'59.76"E, 22.VII.2009, on *Salix* sp., C. Cocquempot (CBGP), 28 adults; Alpes-Maritimes, Lantosque, Granges de la Brasque, 1690 m, 44°0'28.6704"N-7°14'56.9106"E, 09.VII.2009, on *Salix* sp., C. Cocquempot (CBGP), 28 adults; Alpes-Maritimes, Lantosque, Saint-Colomban, Camari, 897 m, 43°57'7.9956"N-7°20'52.5906"E, 04.VII.2008, on *Salix* sp., C. Cocquempot (CBGP), 7 adults; Alpes-Maritimes, Tende, Les Mesches, 1450 m, 10.VII.1994, 1♂, 2♀, I. Malenovský (MMBC).

DISTRIBUTION. — Fauna Europaea: Austria, Belgium, Czech Republic, Denmark, Finland, France, Germany, Great Britain, Greece, Ireland, Italy (mainland + Sardinia + Sicily), Moldova, Norway, Poland, Romania, Russia, Slovakia, Spain, Sweden, Switzerland, Ukraine; INPN: no data; additional data from Psyl'list: Greenland, Hungary, Japan, Slovenia.

COMMENTS

Description in Hodkinson & White (1979a). Biology in Lauterer (1976) and Conci *et al.* (1993). Host-plants: several species of *Salix* (Salicaceae).

Cacopsylla breviantennata (Flor, 1861)

Psylla breviantennata Flor, 1861: 375.

MATERIAL EXAMINED. — France. Alpes-Maritimes, Saint-Dalmas-le-Selvage, M09-SES1400-T2-M2, 1♀ (MNHN); same locality, M09-SES1400-T8-IN, 1♀ (BMHN); Alpes-Maritimes, Saorge, M10-CAI1400-T6-M1, 1♂ (MNHN); same locality, M10-CAI2000-T7-M1, 1♂ (MNHN); Alpes-Maritimes, Saint-Martin-Vésubie, M09-BOR1400-T1-M1, 1♂ (BMNH).

DISTRIBUTION. — Fauna Europaea: Austria, Balears, Czech Republic, France, Germany, Italy, Romania, Switzerland; INPN: no data; additional data from Psyl'list: Greenland, Hungary, Japan, Slovenia.

COMMENTS

Description in Vondráček (1957), Dobreanu & Manolache (1962), Klimaszewski (1963) and Burckhardt (2010). Biology in Conci *et al.* (1993). Host-plants: *Sorbus aria* Crantz (Rosaceae).

Cacopsylla brunneipennis (Edwards, 1896)

Psylla brunneipennis Edwards, 1896: 238.

MATERIAL EXAMINED. — France. Alpes-Maritimes, Saint-Martin-Vésubie, M09-BOR1400-T1-M1, 3♀ (MNHN); same locality, M09-BOR1400-T2-M1, 2♀ (MNHN); same locality, M09-BOR1400-T8-M1, 1♀ (MNHN); same locality, M09-BOR1400-T1-M2, 4♀ (MNHN); same locality, M09-BOR1400-T2-M2, 3♀ (MNHN); same locality, M09-BOR1400-T8-M2, 1♀ (MNHN); Alpes-Maritimes, Valdeblore, M09-BOR2000-T2-M1, 1♀ (MNHN); same locality, M09-BOR2000-T7-M1, 1♂ (MNHN); same locality, M09-BOR2000-T2-M2, 2♂, 1♀ (MNHN); Alpes-Maritimes, Saint-Dalmas-le-Selvage, M09-SES2000-T1-IN, 1♀ (MNHN); same locality, M09-SES1400-T1-M2, 1♀ (MNHN); same locality, M09-SES1400-T1-M2, 1♀ (MNHN); Alpes-Maritimes, Saorge, M10-CAI1400-T1-M2, 1♀ (MNHN); same locality, M10-CAI1400-T6-M2, 1♂, 1♀ (MNHN); same locality, M10-CAI1400-T3-M2, 1♂ (MNHN); same locality, M10-CAI1400-T7-M2, 2♀ (MNHN); same locality, M10-CAI1400-T3-M1, 1♀ (MNHN); same locality, M10-CAI1400-T7-M1, 2♀ (MNHN); same locality, M10-CAI2000-T1-M1, 7♂, 36♀ (MNHN); same locality, M10-CAI2000-T2-M1, 1♀ (MNHN); same locality, M10-CAI2000-T3-M1, 5♂, 24♀ (MNHN); same locality, M10-CAI2000-T4-M1, 8♀ (MNHN); same locality, M10-CAI2000-T5-M1, 6♀; same locality, M10-CAI2000-T6-M2, 1♂, 7♀ (MNHN); same locality, M10-CAI2000-T7-M1, 3♂, 18♀ (MNHN); same locality, M10-CAI2000-T1-M2, 3♂, 24♀ (MNHN); same locality, M10-CAI2000-T2-M2, 1♂, 3♀ (MNHN); same locality, M10-CAI2000-T3-M2, 1♂, 5♀ (MNHN); same locality, M10-CAI2000-T3-IN, 1♀ (MNHN); same locality, M10-CAI2000-T1-M2, 1♀ (MNHN); same locality, M10-CAI2000-T7-M2, 2♂, 3♀ (BMNH); Alpes-Maritimes, Breil-sur-Roya, Authion, vacherie de l'Ortiguier, 1960 m, 43°59'40.6284"N-7°26'1.0536"E, 20.VII.2009, on *Larix decidua* Mill., C. Cocquempot (CBGP), 62 adults; same data except Moulinet, Col de Turini, 1610 m, 43°58'37.56"N-7°23'30.7782"E, 09.VII.2009, on herbaceous plants, 1 adult; same data except Lantosque, Piste du col du Fort, 1770 m, 44°0'43.9668"N-7°14'45.3546"E, 13.VII.2009, on *Larix decidua* Mill., 21 adults; same data except Col d'Andrion (Col du Fort), 1990 m, 44°1'3.8202"N-7°15'12.1206"E, 13.VII.2009, on *Larix decidua* Mill., 1 adult; same data except Lantosque, Granges de la Brasque, 1690 m, 44°0'28.6704"N-7°14'56.9106"E, 13.VII.2009, 1 adult; same data except Saint-Dalmas-de-Tende, Pas de La Nauque, 2130 m, 44°3'6.4722"N-7°31'21.5148"E, 17.VII.2009, on *Larix decidua* Mill., 8 adults; same data except Lac de Trem, 2270 m, 44°3'5.0472"N-7°26'36.8622"E, 18.VII.2009, 4 adults; Alpes-Maritimes, Tende, Les Mesches, 1450 m, 10.VII.1994, 2♂, 2♀, I. Malenovský (MMBC); Alpes-Maritimes, Breil-sur-Roya, Authion, 1850 m, 28.VIII.1995, 1♂, I. Malenovský (MMBC); Alpes-Maritimes, Bolène-Vesubie, massif de la cime du Diable, 1800-2600 m, 28.VIII.1995, 9♂, 21♀, I. Malenovský (MMBC); Alpes-Maritimes, La Brigue, French-Italian border between Mt Grai (2013 m) and Cime de Marte (2135 m), 21.VIII.1996, 10♂, 11♀, I. Malenovský (MMBC).

DISTRIBUTION. — Fauna Europaea: Austria, Bulgaria, Czech Republic, Denmark, Finland, France, Germany, Great Britain, Ireland, Italy (mainland + Sardinia), Norway, Poland, Romania, Russia, Slovakia, Spain, Sweden, Switzerland, Ukraine; INPN: no data; additional data from Psyl'list: Caucasus, Hungary, Slovenia.

COMMENTS

Description in Hodkinson & White (1979) and Ossiannilsson (1992). Biology in Conci *et al.* (1996). Host-plants: several species of *Salix* (Salicaceae).

Cacopsylla crataegi (Schrank, 1801)

Chermes crataegi Schrank, 1801: 142.

MATERIAL EXAMINED. — France. Alpes-Maritimes, Breil-sur-Roya, Authion, vacherie de l'Ortiguier, 1960 m, 43°59'40.6284"N-7°26'1.0536"E, 20.VII.2009, on *Larix decidua* Mill., C. Cocquempot (CBGP), 1 adult.

DISTRIBUTION. — Fauna Europaea: Austria, Belgium, Bulgaria, Czech Republic, Denmark, France, Germany, Great Britain, Ireland, Italian (mainland + Sardinia + Sicily), Moldova, Poland, Romania, Slovakia, Spain, Sweden, Switzerland, Ukraine; INPN: no data; additional data from Psyl'list: Algeria, Caucasus, Georgia, Greece, Hungary, India, Iran, Israel, Morocco, Slovenia.

COMMENTS

Description in Hodkinson & White (1979a), Ossiannilsson (1992) and Burckhardt (2010). Biology in Ossiannilsson (1992) and Conci *et al.* (1993). Host-plants: several species of *Crataegus* (Rosaceae).

Cacopsylla iteophila (Löw, 1876)

Psylla iteophila Löw, 1876: 196.

MATERIAL EXAMINED. — France. Alpes-de-Haute-Provence, Colmars-Alpes, Col des Champs, 1920 m, 44°11'4.884"N-6°40'15.3984"E, 10.VII.2011, on *Larix decidua* Mill., C. Cocquempot (CBGP), 8 adults.

DISTRIBUTION. — Fauna Europaea: Austria, France, Italy, Poland, Slovakia, Spain, Switzerland; INPN: no data; additional data from Psyl'list: Slovenia.

COMMENTS

Description in Conci & Tamanini (1990b). Biology in Conci *et al.* (1993). Host-plants: several species of *Salix* (Salicaceae).

Cacopsylla limbata (Meyer-Dür, 1871)

Psylla limbata Meyer-Dür, 1871: 392.

MATERIAL EXAMINED. — France. Alpes-Maritimes, La Brigue, French-Italian border between Mt Grai (2013 m) and Cime de Marte (2135 m), 21.VIII.1996, 1♂, I. Malenovský (MMBC).

DISTRIBUTION. — Fauna Europaea: France, Italy, Switzerland; INPN: no data; additional data from Psyl'list: no additional data.

COMMENTS

Description in Conci & Tamanini (1982). Biology in Conci & Tamanini (1989b) and Conci *et al.* (1993). Host-plants: *Rhamnus alpina* L. and *R. pumila* Turra (Rhamnaceae).

Cacopsylla melanoneura (Foerster, 1848)

Psylla melanoneura Foerster, 1848: 75.

MATERIAL EXAMINED. — France. Alpes-Maritimes, Valdeblore, M09-BOR2000-T2-M1, 2♂ (MNHN); same locality, M09-BOR2000-T2-M2; Alpes-Maritimes, Saint-Dalmas-le-Selvage,

M09-SES2000-T2-M1, 3♀ (MNHN); Alpes-Maritimes, Saorge, M10-CAI1400-T3-M1, 1♂ (MNHN); same locality, M10-CAI1400-T3-M2, 1♀ (MNHN); same locality, M10-CAI1400-T3-M1, 1♂, 1♀ (BMNH); same locality, M10-CAI1400-T4-M1, 1♂ (MNHN); Alpes-Maritimes, Saint-Dalmas-de-Tende, Pas de La Nauque, 2130 m, 44°3'6.4722"N-7°31'21.5148"E, 17.VII.2009, on *Larix decidua* Mill., C. Cocquempot (CBGP), 1 adult; Alpes-Maritimes, La Brigue, French-Italian border between Mt Grai (2013 m) and Cime de Marte (2135 m), 21.VIII.1996, 6♂, 2♀, I. Malenovský (MMBC).

DISTRIBUTION. — Fauna Europaea: Austria, Belgium, Bulgaria, Channel Is., Croatia, Czech Republic, Danish mainland, French mainland, Germany, Great Britain, Greece, Ireland, Italian (mainland + Sardinia), Moldova, Norway, Poland, Romania, Slovakia, Spain, Sweden, Switzerland, The Netherlands (doubtful), Ukraine; INPN: no data; additional data from Psyl'list: Algeria, China, Hungary, Japan, Lithuania, Mongolia, Russia, Slovenia.

COMMENTS

Description in Hodkinson & White (1979a), Ossiannilsson (1992) and Burckhardt (2010). Biology in Conci *et al.* (1993). Host-plants: several *Crataegus* species, *Malus domestica* Borkh., *Mespilus germanica* L. and *Pyrus communis* L. (Rosaceae).

Cacopsylla myrthi (Puton, 1876)

Psylla myrthi Puton, 1876: 285.

MATERIAL EXAMINED. — France. Alpes-Maritimes, Saint-Martin-Vésubie, M09-BOR1400-T1-M2, 1♀ (MNHN); Alpes-Maritimes, Saorge, M10-CAI1400-T1-M2, 1♀ (MNHN); same locality, M10-CAI1400-T3-M2, 1♂, 1♀ (MNHN); same locality, M10-CAI1400-T4-M2, 1♀ (MNHN); same locality, M10-CAI1400-T6-M2, 2♀ (MNHN); same locality, M10-CAI1400-T3-M1, 1♀ (MNHN); Alpes-Maritimes, Saorge, M10-CAI2000-T1-M1, 4♂, 1♀ (MNHN); same locality, M10-CAI2000-T3-M1, 5♂, 4♀ (MNHN); same locality, M10-CAI2000-T4-M1, 3♂, 3♀ (MNHN); same locality, M10-CAI2000-T5-M1, 4♂, 3♀ (MNHN); same locality, M10-CAI2000-T1-M2, 1♂, 1♀ (MNHN); same locality, M10-CAI2000-T2-M2, 10♂, 6♀ (MNHN); same locality, M10-CAI2000-T3-M2, 2♂, 4♀ (BMNH); same locality, M10-CAI2000-T4-M2, 1♂ (MNHN); same locality, M10-CAI2000-T5-M2, 1♂ (MNHN); same locality, M10-CAI2000-T6-M2, 1♂ (MNHN).

DISTRIBUTION. — Fauna Europaea: France, Germany, Greece, Italy (mainland + Sicily), Malta, Spain, Ukraine; INPN: no data; additional data from Psyl'list: Algeria, Israel, Turkey.

COMMENTS

Description in Vondráček (1950) (as *Psylla myrthi* Put.) and Loginova (1975) (as *Psylla euxina* Loginova, 1975). Biology in Conci *et al.* (1993). Host-plants: *Rhamnus alaternus* L. and *Rhamnus palaestina* Boiss. (Rhamnaceae).

Cacopsylla notata (Flor, 1861)

Psylla notata Flor, 1861: 365.

MATERIAL EXAMINED. — France. Alpes-Maritimes, Saint-Dalmas-le-Selvage, M09-SES2000-T1-IN, 1♀ (MNHN); Alpes-Maritimes, Moulinet, Col de Turini, piste de Gasta-Fume, 1625 m, 43°58'27.1482"N-7°23'42.7374"E, 02.VII.2008, C. Cocquem-

pot (CBGP), 1 adult; Alpes-Maritimes, Moulinet, Col de Turini, 1610 m, 43°58'37.56"N-7°23'30.7782"E, 09.VII.2009, on herbaceous plants, C. Cocquempot (CBGP), 1 adult; Alpes-Maritimes, Saint-Dalmas-de-Tende, Refuge Neige et Merveilles, 1545 m, 44°4'12.0318"N-7°30'44.064"E, 16.VII.2009, C. Cocquempot (CBGP), 2 adults; Alpes-de-Haute-Provence, Entraunes, Piste de la Cascade de l'Aiglière, 1420 m, 44°12'24.9732"N-6°44'33.4782"E, 14.VII.2011, C. Cocquempot (CBGP), 1 adult; Alpes-Maritimes, Saint-Dalmas-de-Tende, Lac de Trem, 2270 m, 44°3'5.0472"N-7°26'36.8622"E, 18.VII.2009, C. Cocquempot (CBGP), 1 adult.

DISTRIBUTION. — Fauna Europaea: Bulgaria, France, Greece, Italy (mainland + Sardinia + Sicily); INPN: no data; additional data from Psyl'list: Iran, Turkey.

COMMENTS

Description in Burckhardt & Hodkinson (1986). Biology in Conci *et al.* (1993). Host-plants: several species of *Pyrus* (Rosaceae).

Cacopsylla picta (Foerster, 1848)

Psylla picta Foerster, 1848: 81.

MATERIAL EXAMINED. — France. Alpes-Maritimes, Saorge, M10-CAI1400-T5-M2, 1 ♂ (MNHN).

DISTRIBUTION. — Fauna Europaea: Austria, Belgium, Czech Republic, Finland, France, Germany, Italy, Moldova, Slovakia, Sweden, Switzerland, Ukraine; INPN: no data; additional data from Psyl'list: Bulgaria, Great Britain, Slovenia.

COMMENTS

Description in Ossiannilsson (1992), as *Cacopsylla* (*Thamnopsylla*) *costalis* (Flor, 1861), and Burckhardt (2010). Biology in Ossiannilsson (1992). Host-plants: several species of *Malus* (Rosaceae).

Cacopsylla propinqua (Schaefer, 1949) (Fig. 1A)

Psylla propinqua Schaefer, 1949: 37.

MATERIAL EXAMINED. — France. Alpes-Maritimes, Saint-Dalmas-de-Tende, Lac de la Muta, 2365 m, 44°2'57.2742"N-7°26'5.694"E, 18.VII.2009, C. Cocquempot (CBGP), 1 adult.

DISTRIBUTION. — Fauna Europaea: Finland, Germany, Italy, Norway, Russia, Slovakia (doubtful), Sweden, Switzerland; INPN: no data; additional data from Psyl'list: no additional data.

COMMENTS

Description in Schaefer (1949) and Conci & Tamanini (1986a). Biology in Conci *et al.* (1993). Host-plants: several species of *Salix* (Salicaceae). New for France.

Cacopsylla pruni (Scopoli, 1763)

Chermes pruni Scopoli, 1763: 140.

MATERIAL EXAMINED. — France. Alpes-Maritimes, Saorge, M10-CAI1400-T1-M2, 1 ♂ (MNHN); same locality, M10-CAI1400-T2-M2, 1 ♂, 1 ♀ (BMNH); same locality, M10-CAI1400-T6-M2, 1 ♀ (MNHN); same locality, M10-CAI2000-T1-M1, 1 ♂ (MNHN); same locality, M10-CAI2000-T1-M2, 1 ♂ (MNHN); Alpes-Maritimes, Saint-Martin-Vésubie, M09-BOR1400-T1-M1, 1 ♀ (MNHN).

DISTRIBUTION. — Fauna Europaea: Austria, Belgium, Bulgaria, Czech Republic, Denmark, Finland, France, Germany, Great Britain, Ireland, Italy, Moldova, Norway, Poland, Romania, Russia, Slovakia, Spain, Sweden, Switzerland, Ukraine; INPN: no data; additional data from Psyl'list: Caucasus, Georgia, Hungary, Iran, Slovenia.

COMMENTS

One specimen is noteworthy in lacking the typical orange-brown forewing coloration. Description in Hodkinson & White (1979a), Ossiannilsson (1992) and Burckhardt (2010). Biology in Lauterer (1999; 2011). Host-plants: several *Prunus* species. This species is a vector of "*Candidatus* Phytoplasma prunorum responsible for the European Stone Fruit Yellows (Carraro *et al.* 1998). According to Peccoud *et al.* (2013), *C. pruni* is a complex of two cryptic species.

Cacopsylla pulchella (Löw, 1877)

Psylla pulchella Löw, 1877: 143.

MATERIAL EXAMINED. — France. Alpes-Maritimes, Saint-Martin-Vésubie, M09-BOR1400-T2-M2, 1 ♂, 1 ♀ (BMNH); Alpes-Maritimes, Saint-Dalmas-le-Selvage, M09-SES1400-T8-M2, 1 ♀ (MNHN); M09-SES2000-T2-M2, 1 ♂ (MNHN); same locality, M09-SES2000-T8-M2, 1 ♀ (MNHN).

DISTRIBUTION. — Fauna Europaea: France, Germany, Great Britain, Greece, Italy (mainland + Sicily), Switzerland, Ukraine; INPN: no data; additional data from Psyl'list: Hungary, Israel, Lebanon, Portugal (mainland + Azores), Serbia, Slovenia, Spain (mainland + Balearic Islands), Turkey.

COMMENTS

Description in Hodkinson & White (1979a) and Burckhardt (1999). Biology in Burckhardt (1999). Host-plant: *Cercis siliquastrum* L. (Fabaceae).

Cacopsylla pulchra (Zetterstedt, 1840)

Chermes pulchra Zetterstedt, 1840: 309.

MATERIAL EXAMINED. — France. Alpes-Maritimes, Saint-Martin-Vésubie, M09-BOR1400-T2-M2, 1 ♂ (MNHN).

DISTRIBUTION. — Fauna Europaea: Austria, Belgium, Czech Republic, Denmark, Finland, France, Germany, Great Britain, Ireland, Italy (mainland + Sardinia + Sicily), Moldova, Norway, Poland, Romania, Russia, Slovakia, Sweden, Switzerland, Ukraine; INPN: no data; additional data from Psyl'list: Caucasus, Hungary, Japan, Slovenia.

COMMENTS

Description in Hodkinson & White (1979a) and Ossiannilsson (1992). Biology in Conci *et al.* (1993), Ossiannilsson

(1992) and Lauterer (1998). Host-plants: several species of *Salix* (Salicaceae).

Cacopsylla rhamnicola (Scott, 1876)

Psylla rhamnicola Scott, 1876: 548.

MATERIAL EXAMINED. — France. Alpes-Maritimes, Saint-Dalmas-le-Selvage, M09-SES1400-T7-M2, 1♂ (MNHN); Alpes-Maritimes, Saorge, M10-CAI1400-T4-M2, 1♀ (MNHN).

DISTRIBUTION. — Fauna Europaea: Austria, Czech Republic, Denmark, Finland, France, Great Britain, Ireland, Italy (mainland), Moldova, Russia, Slovakia, Slovenia, Sweden, Switzerland, Ukraine; INPN: no data; additional data from Psyl'list: Caucasus, Georgia, Hungary, Kazakhstan, Mongolia, Romania, Slovenia, Spain, Turkey.

COMMENTS

Description in Hodkinson & White (1979a), Conci & Tamanini (1988) and Ossiannilsson (1992). Biology in Ossiannilsson (1992) and Lauterer (1999). Host-plants: several species of *Rhamnus* (Rhamnaceae).

Cacopsylla rhododendri (Puton, 1871)

(Fig. 1B)

Psylla rhododendri Puton, 1871: 436.

MATERIAL EXAMINED. — France. Alpes-Maritimes, Valdeblore, M09-BOR2000-T7-M1, 1♀ (MNHN); same locality, M09-BOR2000-T8-M2, 3♂ (MNHN); France. Alpes-Maritimes, Saorge, M10-CAI1400-T7-M2, 2♂ (BMNH); Alpes-Maritimes, Tende, Val de Minière, 1600 m, 10.VII.1994, 3♂, 1♀, I. Malenovský (MMBC); Alpes-Maritimes, Bolène-Vesubie, massif de la cime du Diable, 1800-2600 m, 28.VIII.1995, 9♂, 6♀, I. Malenovský (MMBC); Alpes-Maritimes, La Brigue, French-Italian border between Mt Grai (2013 m) and Cime de Marte (2135 m), 21.VIII.1996, 2♂, 1♀, I. Malenovský (MMBC).

DISTRIBUTION. — Fauna Europaea: Austria, Belgium, Finland, France, Italy, Moldova, Romania, Switzerland, Ukraine; INPN: no data; additional data from Psyl'list: "Czechoslovakia", Germany, Japan, Korea, Russia.

COMMENTS

Description in Dobreanu & Manolache (1962) and Ossiannilsson (1992). Biology in Ossiannilsson (1992) and Conci *et al.* (1993). Host-plants: several species of *Rhododendron* (Ericaceae).

Cacopsylla saliceti

(Foerster, 1848)

Psylla saliceti Foerster, 1848: 79.

MATERIAL EXAMINED. — France. Alpes-Maritimes, Valdeblore, M09-BOR2000-T8-M2, 1♂ (MNHN); Alpes-Maritimes, Saint-Dalmas-le-Selvage, M09-SES2000-T1-M2, 1♂ (BMNH); Alpes-

Maritimes, Breil-sur-Roya, Authion, vacherie de l'Ortiguier, 1960 m, 43°59'40.6284"N-7°26'1.0536"E, on *Larix decidua*, 20.VII.2009, C. Cocquempot (CBGP), 7 adults; Alpes-Maritimes, Lantosque, Piste du col du Fort, 1770 m, 44°0'43.9668"N-7°14'45.3546"E, 13.VII.2009, on *Larix decidua* Mill., C. Cocquempot (CBGP), 8 adults; Alpes-Maritimes, Lantosque, Col d'Andrion (Col du Fort), 1990 m, 44°1'3.8202"N-7°15'12.1206"E, 13.VII.2009, on *Larix decidua* Mill., C. Cocquempot (CBGP), 1 adult; Alpes-Maritimes, Saint-Dalmas-de-Tende, Pas de La Nauque, 2130 m, 44°3'6.4722"N-7°31'21.5148"E, 17.VII.2009, on *Larix decidua* Mill., C. Cocquempot (CBGP), 2 adults.

Cacopsylla saliceti (Foerster, 1848)? Alpes-Maritimes, Valdeblore, Col de Salèse, coniferous forest, 2058 m, 44°8'14.424"N-7°14'13.1274"E, 10.VI.09-24.VI.09 (Malaise trap, M09-BOR2000-T1-M1), 1♀ (MNHN).

DISTRIBUTION. — Fauna Europaea: Austria, Belgium, Bulgaria, Czech Republic, France, Germany, Great Britain, Ireland, Italy (mainland + Sicily), Moldova, Poland, Romania, Slovakia, Spain, Switzerland, The Netherlands, Ukraine; INPN: no data; additional data from Psyl'list: Georgia, Hungary, Iran, Slovenia, Turkey.

COMMENTS

Description in Hodkinson & White (1979a). Biology in Conci *et al.* (1993) and Lauterer (1999). Host-plants: several species of *Salix* (Salicaceae).

Cacopsylla sorbi (Linnaeus, 1767)

Chermes sorbi Linnaeus, 1767: 738.

MATERIAL EXAMINED. — France. Alpes-Maritimes, Moulinet, Col de Turini, piste de Gasta-Fume, 1625 m, 43°58'27.1482"N-7°23'42.7374"E, 04.VII.2008, C. Cocquempot (CBGP), 1 adult; same data except 02.VII.2008, C. Cocquempot (CBGP), 127 adults; Alpes-Maritimes, Moulinet, Col de Turini, 1610 m, 43°58'37.56"N-7°23'30.7782"E, 09.VII.2009, on herbaceous plants, C. Cocquempot (CBGP), 40 adults; Alpes-Maritimes, Lantosque, Col d'Andrion (Col du Fort), 1990 m, 44°1'3.8202"N-7°15'12.1206"E, 13.VII.2009, on *Sorbus aucuparia* L., C. Cocquempot (CBGP), 41 adults; same data except on *Larix decidua* Mill., C. Cocquempot (CBGP), 2 adults; Alpes-Maritimes, Saint-Dalmas-de-Tende, GR du refuge des Merveilles, 1800 m, 44°3'33.0444"N-7°28'46.5492"E, 18.VII.2009, C. Cocquempot (CBGP), 35 adults; same data except Lac de la Minière, 1565 m, 44°4'9.9546"N-7°30'37.641"E, 17.VII.2009, on *Salix* sp., C. Cocquempot (CBGP), 7 adults; same data except GR du Pas de la Nauque, 1536 m, 44°4'6.7476"N-7°30'50.6232"E, 17.VII.2009, on *Larix decidua* Mill., C. Cocquempot (CBGP), 136 adults; Alpes-Maritimes, Saint-Dalmas-de-Tende, Pas de La Nauque, 2130 m, 44°3'6.4722"N-7°31'21.5148"E, 17.VII.2009, on *Larix decidua* Mill., C. Cocquempot (CBGP), 2 adults; Alpes-Maritimes, Saint-Dalmas-de-Tende, Lac de Trem, 2270 m, 44°3'5.0472"N-7°26'36.8622"E, 18.VII.2009, C. Cocquempot (CBGP), 4 adults; Breil-sur-Roya, Authion, vacherie de l'Ortiguier, 1960 m, 43°59'40.6284"N-7°26'1.0536"E, 20.VII.2009, on *Larix decidua* Mill., C. Cocquempot (CBGP), 4 adults; Alpes-de-Haute-Provence, Colmars-les-Alpes, Piste de Ratéry, 1670 m, 44°11'16.5804"N-6°39'15.4548"E, 10.VII.2011, on *Sorbus aucuparia* L., C. Cocquempot (CBGP), 14 adults; Alpes-Maritimes, Tende, Val de Minière, 1600 m, 10.VII.1994, 3♂, 10♀, I. Malenovský (MMBC); Alpes-Maritimes, Bolène-Vesubie, massif de la cime du Diable, 1800-2600 m, 28.VIII.1995, 3♂, 1♀, I. Malenovský (MMBC).

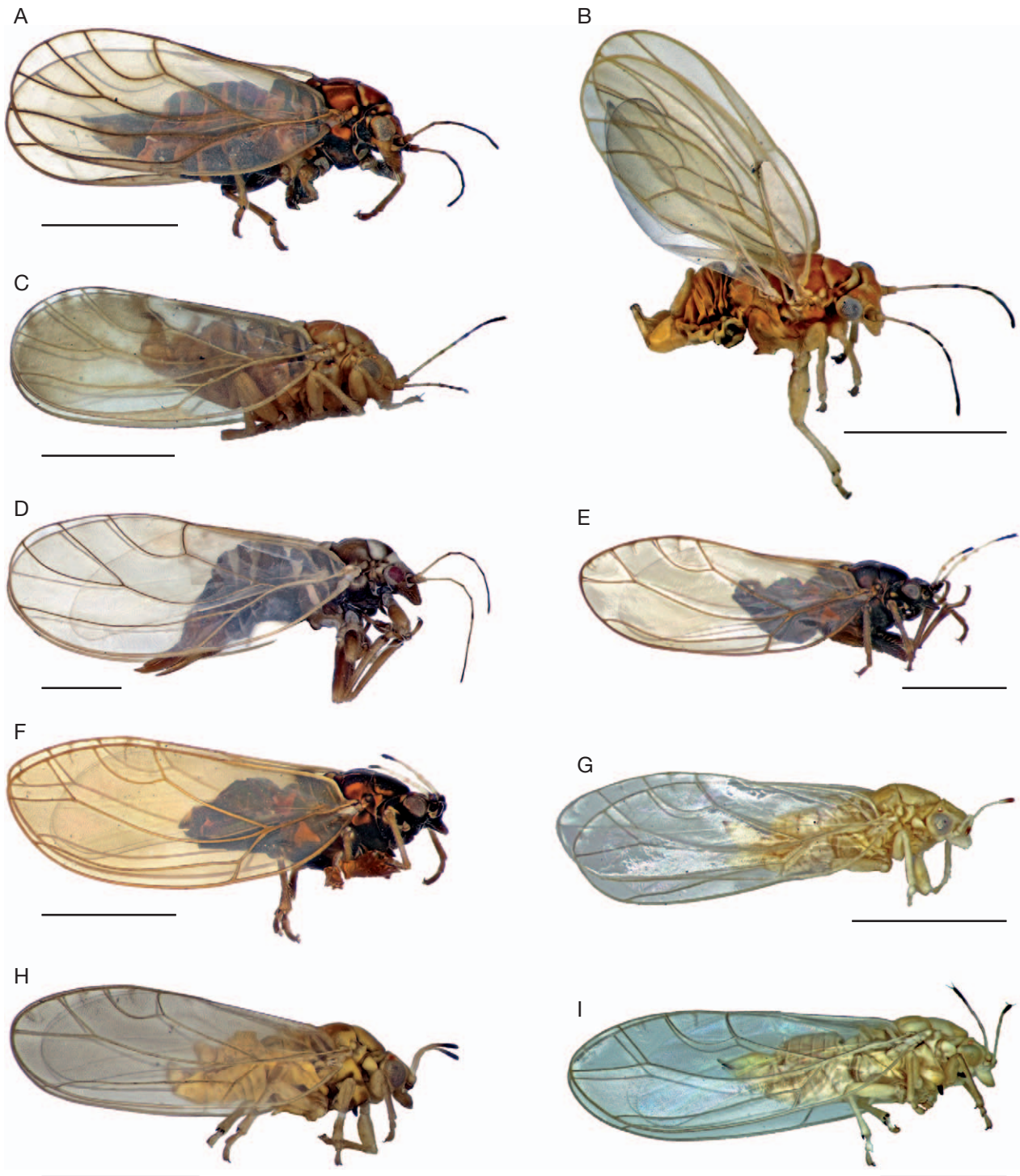


FIG 1. — Some noteworthy psyllid species collected in the Mercantour National Park. Species preceded by an asterisk are new for France. **A**, **Cacopsylla propinqua* (Schaefer, 1949); **B**, *Cacopsylla rhododendri* (Puton, 1871); **C**, **Cyamophila prohaskai* (Priesner, 1927); **D**, *Psylla fusca* (Zetterstedt, 1828); **E**, *Bactericera bohemica* (Šulc, 1913); **F**, *Bactericera femoralis* (Foerster, 1848); **G**, *Trioza brachyceraea* Hodkinson & White, 1979 = *Trioza (Trioza) rapisardai* Conci & Tamanini, 1984 syn. nov.; **H**, *Trioza cerastii* (Linnaeus, 1758); **I**, **Trioza flixiana* Burckhardt & Lauterer, 2002. Scale bars: 1 mm.

DISTRIBUTION. — Fauna Europaea: Austria, Belgium, Bulgaria, Czech Republic, Denmark, Finland, France, Germany, Great Britain, Ireland, Italy, Norway, Poland, Russia, Slovakia, Sweden, Switzerland, Ukraine; INPN: no data; additional data from Psyl'list: North America, Slovenia.

COMMENTS

Description in Hodkinson & White (1979a) and Ossiannilsson (1992). Biology in Ossiannilsson (1992), Conci *et al.* (1993) and Lauterer (1999). Host-plants: *Sorbus aucuparia* L. and *Sorbus amurensis* Koehne (Rosaceae).

Cacopsylla visci (Curtis, 1835)

Psylla visci Curtis, 1835: unpaginated, with plate 565.

MATERIAL EXAMINED. — France. Alpes-Maritimes, Saint-Martin-Vésubie, M09-BOR1400-T1-M2, 1♀ (MNHN); same locality, M09-BOR1400-T8-M2, 1♂ (MNHN); Alpes-Maritimes, Saorge, M10-CAI1400-T1-M1, 1♂ (BMNH); same locality, M10-CAI1400-T3-M2, 1♀ (BMNH).

DISTRIBUTION. — Fauna Europaea: Austria, Belgium, Czech Republic, France, Germany, Great Britain, Italy, Moldova, Poland, Slovakia, Switzerland, Ukraine; INPN: no data; additional data from Psyllist: Bulgaria, Caucasus, Hungary, Iraq, Japan, Morocco, Slovenia.

COMMENTS

Description in Hodkinson & White (1979a). Biology in Conci *et al.* (1993) and Lauterer (1999). Host-plants: *Viscum album* L. (Santalaceae) and *Loranthus europaeus* Jacq. (Loranthaceae).

Cacopsylla zetterstedti (Thomson, 1877)

Chermes zetterstedti Thomson, 1877: 832.

MATERIAL EXAMINED. — France. Alpes-de-Haute-Provence, Fours, Bayasse, 1790 m, 44°18'39.366"N-6°44'23.0022"E, 11.VII.2011, on *Hippophae rhamnoides* L. [= *Elaeagnus rhamnoides* (L.) A. Nelson], C. Cocquempot (CBGP), 53 adults.

DISTRIBUTION. — Fauna Europaea: Austria, Belgium, Czech Republic, Denmark, Finland, France, Germany, Great Britain, Italy, Norway, Poland, Slovakia, Sweden, Switzerland, The Netherlands; INPN: no data; additional data from Psyllist: Caucasus, Georgia, Russia.

COMMENTS

Description in Hodkinson & White (1979a) and Ossianilsson (1992). Biology in Conci *et al.* (1993) and Lauterer (1999). Host-plant: *Elaeagnus rhamnoides* (L.) A. Nelson.

Genus *Cyamophila* Loginova, 1976

Cyamophila probaskai (Priesner, 1927)
(Fig. 1C)

Psylla probaskai Priesner, 1927: 263.

MATERIAL EXAMINED. — France. Alpes-Maritimes, Saint-Dalmas-le-Selvage, M09-SES2000-T8-M2, 1♂ (MNHN).

DISTRIBUTION. — Fauna Europaea: Austria, Italy, Switzerland; INPN: no data; additional data from Psyllist: no additional data.

COMMENTS

Description in Conci & Tamanini (1986b), Conci & Tamanini (1989a) and Hodkinson & Hollis (1987). Biology in Conci & Tamanini (1989a) and Conci *et al.* (1993). Host-plant: *Anthyllis vulneraria* L. (Fabaceae). New for France.

Genus *Livilla* Curtis, 1835

Livilla pyrenaica (Mink, 1859)

Arytaina pyrenaica Mink, 1859: 430.

MATERIAL EXAMINED. — France. Alpes-Maritimes, Saorge, M10-CAI1400-T1-M1, 8♂, 7♀ (MNHN); same locality, M10-CAI1400-T5-M1, 1♂, 4♀ (MNHN); same locality, M10-CAI1400-T1-M2, 4♂, 10♀ (MNHN); same locality, M10-CAI1400-T4-M2, 1♀ (MNHN); same locality, M10-CAI2000-T1-M1, 11♂, 8♀ (MNHN), 2♂, 2♀ (NHMB); same locality, M10-CAI2000-T3-M1, 1♀ (MNHN); same locality, M10-CAI2000-T4-M1, 1♂, 3♀ (MNHN); same locality, M10-CAI2000-T5-M1, 1♂, 1♀ (MNHN); same locality, M10-CAI2000-T6-M1, 5♂, 2♀ (BMNH); same locality, M10-CAI2000-T1-M2, 29♂, 10♀ (MNHN), 2♂, 2♀ (NHMB); same locality, M10-CAI2000-T4-M2, 1♂, 1♀ (MNHN); same locality, M10-CAI2000-T5-M2, 2♂, 1♀ (MNHN); M10-CAI2000-T6-M2, 1♂, 2♀ (MNHN); Alpes-Maritimes, Saorge, Route du Caïros, 604 m, 43°59'49.1064"N- 7°30'22.9602"E, 19.VII.2009, on Fabaceae, C. Cocquempot (CBGP), 44 adults; Alpes-de-Haute-Provence, Colmars-les-Alpes, Chemin de la forêt Saint-Jean, 1310 m, 44°10'45.6852"N-6°37'56.7078"E, 13.VII.2011, on Fabaceae, C. Cocquempot (CBGP), 17 adults; Alpes-de-Haute-Provence, Entraunes, Piste de la Cascade de l'Aiglière, 1420 m, 44°12'24.9732"N-6°44'33.4782"E, 14.VII.2011, on Fabaceae, C. Cocquempot (CBGP), 9 adults.

DISTRIBUTION. — Fauna Europaea: France, Italy, Spain; INPN: no data; additional data from Psyllist: Algeria.

COMMENTS

Description in Hodkinson & White (1979a) and Hodkinson & Hollis (1987). Biology in Conci & Tamanini (1988) and Conci *et al.* (1993). Host-plants: several species of *Genista* (Fabaceae).

Livilla variegata (Löw, 1881)

Floria variegata Löw, 1881: 261.

MATERIAL EXAMINED. — France. Alpes-Maritimes, Saint-Dalmas-le-Selvage, M09-SES1400-T1-IN, 1♂, 1♀ (MNHN); same locality, M09-SES1400-T8-IN, 1♀ (MNHN); same locality, M09-SES1400-T7-M1, 4♀ (BMNH); same locality, M09-SES1400-T1-M2, 1♀ (MNHN); Alpes-Maritimes, Saorge, M10-CAI1400-T4-M1, 1♀ (MNHN); Alpes-Maritimes, Lantosque, Granges de la Brasque, 1690 m, 44°0'28.6704"N-7°14'56.9106"E, 09.VII.2009, C. Cocquempot (CBGP), 25 adults; Alpes-Maritimes, Moulinet, Col de Turini, piste de Gasta-Fume, 1625 m, 43°58'27.1482"N-7°23'42.7374"E, 02.VII.2008, C. Cocquempot (CBGP), 3 adults; Alpes-Maritimes, Moulinet, Col de Turini, 1610 m, 43°58'37.56"N-7°23'30.7782"E, 09.VII.2009, on herbaceous plants, C. Cocquempot (CBGP), 1 adult; Alpes-Maritimes, Saint-Dalmas-de-Tende, GR du Pas de la Nauque, 1536 m, 44°4'6.7476"N-7°30'50.6232"E, 17.VII.2009, on Fabaceae, C. Cocquempot (CBGP), 8 adults; Alpes-Maritimes, Tende, Les Mesches, 1450 m, 10.VII.1994, 1♀, I. Malenovský (MMBC).

DISTRIBUTION. — Fauna Europaea: Austria, Czech Republic, France, Germany, Great Britain, Italy, Romania, Slovenia, Spain, Switzerland; INPN: no data; additional data from Psyllist: Bosnia-Herzegovina, Canada (Newfoundland), Hungary, Slovakia.

COMMENTS

Description in Hodkinson & Hollis (1980) and Hodkinson & Hollis (1987). Biology in Conci *et al.* (1993) and Malenovský & Kment (2004). Host-plants: *Laburnum alpinum* (Mill.) Bercht. & J. Presl and *Laburnum anagyroides* Medik. (Fabaceae).

Genus *Psylla* Geoffroy, 1762

Psylla alni (Linnaeus, 1758)

Chermes alni Linnaeus, 1758: 454.

MATERIAL EXAMINED. — **France.** Alpes-de-Haute-Provence, Enchastrayes, La Rente, 1702 m, 44°21'14.022"N- 6°41'56.778"E, 29.VIII.2012, on *Alnus* sp., J.-C. Streito (CBGP), 8 adults; Alpes-de-Haute-Provence, Entraunes, Oustamura, 1360 m, 44°11'37.8528"N-6°44'27.6144"E, 14.VII.2011, on *Alnus* sp., C. Cocquempot (CBGP), 1 adult; Alpes-Maritimes, Lantosque, Saint-Colomban, Camari, 897 m, 43°57'7.9956"N- 7°20'52.5906"E, 04.VII.2008, on *Alnus* sp., C. Cocquempot (CBGP), 3 adults; Alpes-de-Haute-Provence, Entraunes, Le Clôt, 1324 m, 44°11'47.0724"N-6°44'40.9878"E, 11.VII.2011, C. Cocquempot (CBGP), 18 adults; Alpes-de-Haute-Provence, Fours, Tourbière des Girards, 1800 m, 44°18'41.8314"N-6°44'7.3566"E, 01.IX.2012, J.-C. Streito (CBGP), 3 adults.

DISTRIBUTION. — Fauna Europaea: Austria, Belgium, Bulgaria, Czech Republic, Denmark, Finland, France, Germany, Great Britain, Ireland, Italy (mainland + Sardinia), Moldova, Norway, Poland, Romania, Russia, Slovakia, Spain, Sweden, Switzerland, The Netherlands, Ukraine; INPN: no data; additional data from Psyl'list: Canada (Alberta, British Columbia), China, Greenland, Hungary, Japan, Korea, Slovenia, Taiwan, United States of America (Arizona, California, Idaho, Nevada, Oregon, Washington).

COMMENTS

Description in Hodkinson & White (1979a) and Ossianilsson (1992). Biology in Ossianilsson (1992), Conci *et al.* (1993) and Lauterer (1976, 1998). Host-plants: several species of *Alnus* (Betulaceae).

Psylla alpina Foerster, 1848

Psylla alpina Foerster, 1848: 81.

MATERIAL EXAMINED. — **France.** Alpes-Maritimes, La Brigue, French-Italian border between Mt Grai (2013 m) and Cime de Marte (2135 m), 21.VIII.1996, 15♂, 6♀, I. Malenovský (MMBC).

DISTRIBUTION. — Fauna Europaea: Austria, Czech Republic, France, Germany, Italy, Poland, Romania, Switzerland, Ukraine; INPN: no data; additional data from Psyl'list: Bulgaria, Slovenia.

COMMENTS

Description in Dobreanu & Manolache (1962). Biology in Lauterer (1979) and Conci *et al.* (1993). Host-plant: *Alnus viridis* (Chaix) DC. (Betulaceae).

Psylla buxi (Linnaeus, 1758)

Chermes buxi Linnaeus, 1758: 454.

MATERIAL EXAMINED. — **France.** Alpes-Maritimes, Valdeblore, M09-BOR2000-T2-M1, 1♂ (MNHN); Alpes-Maritimes, Saint-Dalmas-le-Selvage, M09-SES2000-T2-M1, 1♂ (BMNH); same locality, M09-SES2000-T2-M2, 3♂, 1♀ (BMNH); same locality, M09-SES1400-T1-M2, 1♀ (MNHN); Alpes-Maritimes, Saorge, Forêt de Caïros, M10-CAI1400-T1-M2, 1♀ (MNHN); same locality, M10-CAI2000-T1-M1, 2♂ (MNHN); same locality, M10-CAI2000-T3-M1, 1♀ (MNHN); same locality, M10-CAI2000-T1-M2, 1♂, 2♀ (MNHN); Alpes-de-Haute-Provence, Entraunes, Le Clôt, 1324 m, 44°11'47.0724"N-6°44'40.9878"E, 11.VII.2011, C. Cocquempot (CBGP), 1 adult; Alpes-de-Haute-Provence, Fours, Col de la Petite-Cayolle, 2400 m, 44°15'32.9286"N-6°44'29.709"E, 09.VII.2011, C. Cocquempot (CBGP), 6 adults; Alpes-de-Haute-Provence, Entraunes, Piste de la Cascade de l'Aiglière, 1420 m, 44°12'24.9732"N-6°44'33.4782"E, 14.VII.2011, on *Buxus* sp., C. Cocquempot (CBGP), 9 adults; Alpes-Maritimes, Saorge, Route du Caïros, 604 m, 43°59'49.1064"N- 7°30'22.9602"E, 20.VII.2009, on *Buxus* sp., C. Cocquempot (CBGP), 3 adults.

DISTRIBUTION. — Fauna Europaea: Austria, Belgium, Bulgaria, Czech Republic, Denmark, France, Germany, Great Britain, Ireland, Italy, Moldova, Norway, Poland, Romania, Slovakia, Spain, Sweden, Switzerland, The Netherlands, Ukraine; INPN: no data; additional data from Psyl'list: Canada (Newfoundland), Hungary, Slovenia, United States of America (Hawaii).

COMMENTS

Description in Hodkinson & White (1979a) and Ossianilsson (1992). Biology in Ossianilsson (1992), Conci *et al.* (1993) and Lauterer (1998). Host-plants: several species of *Buxus* (Buxaceae).

Psylla fusca (Zetterstedt, 1828)
(Fig. 1D)

Chermes fusca Zetterstedt, 1828: 552.

MATERIAL EXAMINED. — **France.** Alpes-de-Haute-Provence, Entraunes, Le Clôt, 1324 m, 44°11'47.0724"N-6°44'40.9878"E, 11.VII.2011, C. Cocquempot (CBGP), 3 adults.

DISTRIBUTION. — Fauna Europaea: Austria, Czech Republic, Denmark, Finland, France, Germany, Italy, Moldova, Norway, Poland, Romania, Russia, Slovakia, Sweden, Switzerland, Ukraine; INPN: no data; additional data from Psyl'list: Georgia, Latvia, Slovenia.

COMMENTS

Description in Ossianilsson (1992). Biology in Ossianilsson (1992), Conci *et al.* (1993) and Lauterer (1998). Host-plants: *Alnus incana* (L.) Moench (Betulaceae).

Genus *Spanioneura* Foerster, 1848

Spanioneura fonscolombii Foerster, 1848

Spanioneura fonscolombii Foerster, 1848: 94.

MATERIAL EXAMINED. — **France.** Alpes-Maritimes, Saint-Martin-Vésubie, M09 BOR1400-T1-M2, 2♂ (MNHN); same locality, M09-BOR1400-T2-M2, 1♂ (MNHN); same locality, M09-BOR1400-T2-M1, 1♂ (MNHN); Alpes-Maritimes, Valdeblore, M09-SES2000-T1-M1, 1♀ (MNHN); same locality, M09-

SES2000-T2-M1, 1 ♀ (MNHN); same locality, M09-SES2000-T2-M2, 1 ♂ (MNHN); Alpes-Maritimes, Saint-Dalmas-le-Selvage, M09-SES2000-T1-M1, 1 ♀ (MNHN); same locality, M09-SES2000-T2-M1, 4 ♂, 4 ♀ (MNHN); same locality, M09-SES2000-T2-M2, 3 ♂, 1 ♀ (MNHN); Alpes-Maritimes, Saorge, M10-CAI1400-T1-M1, 1 ♀ (MNHN); same locality, M10-CAI1400-T3-M1, 2 ♂, 1 ♀ (MNHN); same locality, M10-CAI1400-T1-M2, 2 ♂ (MNHN); same locality, M10-CAI1400-T3-M2, 1 ♂, 3 ♀ (MNHN); Alpes-Maritimes, Saorge, M10-CAI2000-T1-M1, 1 ♀ (MNHN); same locality, M10-CAI2000-T2-M1, 1 ♀ (MNHN); same locality, M10-CAI2000-T3-M, 1 ♂, 2 ♀ (MNHN); same locality, M10-CAI2000-T5-M1, 1 ♂ (MNHN); same locality, M10-CAI2000-T1-M2, 2 ♂, 1 ♀ (BMNH); same locality, M10-CAI2000-T3-M2, 2 ♂ (MNHN); same locality, M10-CAI2000-T4-M2, 1 ♀ (MNHN); same locality, M10-CAI2000-T3-IN, 1 ♀ (MNHN); Breil-sur-Roya, Authion, vacherie de l'Ortiguier, 1960 m, 43°59'40.6284"N-7°26'1.0536"E, 20.VII.2009, on *Larix decidua* Mill., C. Cocquempot (CBGP), 1 adult; Alpes-Maritimes, Moulinet, Col de Turini, 1610 m, 43°58'37.56"N-7°23'30.7782"E, 09.VII.2009, on herbaceous plants, C. Cocquempot (CBGP), 3 adults; Alpes-Maritimes, Lantosque, Granges de la Brasque, 1690 m, 44°0'28.6704"N-7°14'56.9106"E, 09.VII.2009, on *Salix* sp., C. Cocquempot (CBGP), 1 adult; Alpes-Maritimes, Lantosque, Col d'Andrion (Col du Fort), 1990 m, 44°1'3.8202"N-7°15'12.1206"E, 13.VII.2009, on *Larix decidua* Mill., C. Cocquempot (CBGP), 1 adult; Alpes-de-Haute-Provence, Entraunes, Piste de la Cascade de l'Aiglière, 1420 m, 44°12'24.9732"N-6°44'33.4782"E, 14.VII.2011, on *Buxus* sp., C. Cocquempot (CBGP), 5 adults; Alpes-de-Haute-Provence, Fours, Col de la Petite-Cayolle, 2400 m, 44°15'32.9286"N-6°44'29.709"E, 09.VII.2011, C. Cocquempot (CBGP), 1 adult; Alpes-Maritimes, Saint-Dalmas-de-Tende, Lac de la Muta, 2365 m, 44°2'57.2742"N-7°26'5.694"E, 18.VII.2009, C. Cocquempot (CBGP), 6 adults; Alpes-Maritimes, Saorge, Route du Caïros, 604 m, 43°59'49.1064"N-7°30'22.9602"E, 20.VII.2009, on *Buxus* sp., C. Cocquempot (CBGP), 2 adults; Alpes-Maritimes, Saint-Dalmas-de-Tende, Lac de Trem, 2270 m, 44°3'5.0472"N-7°26'36.8622"E, 18.VII.2009, C. Cocquempot (CBGP), 9 adults.

DISTRIBUTION. — Fauna Europaea: Belgium, France, Great Britain, Italy, Luxembourg, Spain, Switzerland; INPN: no data; additional data from Psyl'list: Ireland, Slovenia, United States of America (Connecticut).

COMMENTS

Description in Hodkinson & White (1979a). Biology in Conci *et al.* (1993). Host-plant: *Buxus sempervirens* L. (Buxaceae).

Family TRIOZIDAE Löw, 1879
Genus *Bactericera* Puton, 1876

Bactericera bohémica (Šulc, 1913)
(Fig. 1E)

Trioza bohémica Šulc, 1913: 34.

MATERIAL EXAMINED. — France. Alpes-Maritimes, Lantosque, Col d'Andrion (Col du Fort), 1990 m, 44°1'3.8202"N-7°15'12.1206"E, 13.VII.2009, on *Epilobium angustifolium* L., C. Cocquempot (CBGP), 1 adult; Alpes-Maritimes, Lantosque, Granges de la Brasque, 1690 m, 44°0'28.6704"N-7°14'56.9106"E, 13.VII.2009, C. Cocquempot (CBGP), 2 adults.

DISTRIBUTION. — Fauna Europaea: Austria, Bulgaria, Czech Republic, Finland, France, Germany, Italy, Norway, Poland, Russia, Slovakia, Sweden, Switzerland, Ukraine; INPN: no data; additional data from Psyl'list: Canada, Caucasus, Estonia, Romania.

COMMENTS

Description in Šulc (1913), Conci & Tamanini (1985) and Ossiannilsson (1992). Biology in Ossiannilsson (1992) and Conci *et al.* (1996). Host-plants: *Geum montanum* L. and *G. rivale* L. (Rosaceae).

Bactericera curvatineris
(Foerster, 1848)

Trioza curvatineris Foerster, 1848: 83.

MATERIAL EXAMINED. — France. Alpes-Maritimes, Saorge, M10-CAI2000-T7-M1, 1 ♀ (MNHN); Alpes-Maritimes, Moulinet, Col de Turini, piste de Gasta-Fume, 1625 m, 43°58'27.1482"N-7°23'42.7374"E, 02.VII.2008, C. Cocquempot (CBGP), 5 adults; Alpes-Maritimes, Lantosque, Col d'Andrion (Col du Fort), 1990 m, 44°1'3.8202"N-7°15'12.1206"E, 13.VII.2009, on *Epilobium angustifolium* L., C. Cocquempot (CBGP), 1 adult.

DISTRIBUTION. — Fauna Europaea: Austria, Belgium, Bulgaria, Czech Republic, Finland, France, Germany, Italy, Norway, Poland, Romania, Russia, Slovakia, Sweden, Switzerland; INPN: no data; additional data from Psyl'list: Caucasus, Georgia, Great Britain, Hungary, Ireland, Japan, Lebanon, Slovenia.

COMMENTS

Description in Hodkinson & White (1979a) and Ossiannilsson (1992). Biology in Ossiannilsson (1992) and Conci *et al.* (1996). Host-plants: several species of *Salix* (Salicaceae).

Bactericera femoralis (Foerster, 1848)
(Fig. 1F)

Trioza femoralis Foerster, 1848: 86.

MATERIAL EXAMINED. — France. Alpes-Maritimes, Saint-Dalmas-le-Selvage, M09-SES2000-T1-IN, 1 ♀ (MNHN); Alpes-Maritimes, Saorge, Malaise trap, M10-CAI2000-T5-M1, 1 ♂ (MNHN); same locality, M10-CAI2000-T6-M1, 1 ♀ (BMNH); same locality, M10-CAI2000-T7-M1, 1 ♂, 4 ♀ (MNHN), 1 ♂ (BMNH); Alpes-Maritimes, Bolène-Vesubie, massif de la cime du Diable, 1800–2600 m, 28.VIII.1995, 3 ♂, 4 ♀, I. Malenovský (MMBC); Alpes-Maritimes, La Brigue, French-Italian border between Mt Grai (2013 m) and Cime de Marte (2135 m), 21.VIII.1996, 1 ♂, I. Malenovský (MMBC).

DISTRIBUTION. — Fauna Europaea: Austria, Belgium, Czech Republic, Finland, France, Germany, Italy, Moldova, Norway, Poland, Romania, Russia, Slovakia, Sweden, Switzerland, The Netherlands, Ukraine; INPN: no data; additional data from Psyl'list: Bulgaria, Caucasus, Georgia, Slovenia, Turkey.

COMMENTS

Description in Ossiannilsson (1992). Biology in Bin (1972). Host-plants: several species of *Alchemilla* (Rosaceae).

Bactericera parastricola
Conci, Ossiannilsson & Tamanini, 1988

Bactericera parastricola Conci, Ossiannilsson & Tamanini, 1988: 226.

MATERIAL EXAMINED. — **France**. Alpes-Maritimes, Saint-Dalmas-le-Selvage, «Vallon de Restefond», alpine meadow, 2500 m, 16.VI.1994 (Malaise trap), C. Cocquempot (CBGP), 1♂.

DISTRIBUTION. — Fauna Europaea: Czech Republic, Italy, Romania, Sweden, Switzerland; INPN: no data; additional data from Psyl'list: Austria, Poland.

COMMENTS

Description in Conci *et al.* (1988) and Ossiannilsson (1992). Description of the fifth instar immature in Burckhardt & Lauterer (1997). Biology in Conci *et al.* (1988), Ossiannilsson (1992) and Lauterer & Malenovský (2002). Host-plants: several species of *Salix* (Salicaceae). New for France.

Genus *Eryngiophaga* Klimaszewski, 1968

Eryngiophaga cf. *refuga* (Loginova, 1966)

Trioza refuga Loginova, 1966: 28.

MATERIAL EXAMINED. — **France**. Alpes-Maritimes, Saorge, M10-CAI2000-T2-M2, 1♂ (MNHN).

DISTRIBUTION. — Fauna Europaea: No data; INPN: no data; additional data from Psyl'list: Kazakhstan, Russia (West Siberia).

COMMENTS

Description in Loginova (1966). No data on biology (reported from the subalpine region of Kazakhstan: 2000-2500 m). Host-plant unknown. New for France. The single male at hand resembles *Eryngiophaga refuga* from Kazakhstan and Siberia. However, more material is required to decide if the French population is conspecific with those from Kazakhstan and Siberia.

Genus *Trichohermes* Kirkaldy, 1904

Trichohermes walkeri (Foerster, 1848)

Trioza walkeri Foerster, 1848: 88.

MATERIAL EXAMINED. — **France**. Alpes-Maritimes, Saint-Dalmas-le-Selvage, M09-SES1400-T8-M2, 1♀ (MNHN).

DISTRIBUTION. — Fauna Europaea: Austria, Belgium, Czech Republic, Denmark, France, Germany, Great Britain, Italy, Luxembourg, Moldova, Poland, Romania, Slovakia, Spain, Sweden, Switzerland, Ukraine; INPN: no data; additional data from Psyl'list: Estonia, Finland, Hungary, Latvia, Slovenia.

COMMENTS

Description in Hodkinson & White (1979a) and Ossiannilsson (1992). Biology in Ossiannilsson (1992) and Conci *et al.* (1996). Host-plants: several species of *Rhamnus* (Rhamnaceae).

Genus *Trioza* Foerster, 1848

Trioza abdominalis Flor, 1861

Trioza abdominalis Flor, 1861: 502.

MATERIAL EXAMINED. — **France**. Alpes-Maritimes, Saint-Dalmas-le-Selvage, M09-SES1400-T7-M2, 1♂, 1♀ (BMNH); Alpes-Maritimes, Saorge, M10-CAI1400-T1-M2, 1♀ (MNHN); same locality, M10-CAI2000-T7-M1, 4♂, 2♀ (MNHN); Alpes-Maritimes, Bolène-Vesubie, massif de la cime du Diable, 1800-2600 m, 28.VIII.1995, 1♂, 1♀, I. Malenovský (MMBC).

DISTRIBUTION. — Fauna Europaea: Austria, Czech Republic, Finland, France, Germany, Great Britain, Italy (mainland + Sicily), Norway, Poland, Russia, Slovakia, Spanish (mainland + Canary Is.), Sweden, Switzerland; INPN: no data; additional data from Psyl'list: Estonia, Korea, Latvia, Mongolia, Slovenia.

COMMENTS

Description in Hodkinson & White (1979a) and Ossiannilsson (1992). Biology in Ossiannilsson (1992) and Conci *et al.* (1996). Host-plants: several *Achillea* and *Chrysanthemum* spp. (Asteraceae).

Trioza anthrisci Burckhardt, 1986

Trioza anthrisci Burckhardt, 1986: 425.

MATERIAL EXAMINED. — **France**. Alpes-Maritimes, Saint-Martin-Vésubie, M09-BOR1400-T2-M1, 2♂ (MNHN).

DISTRIBUTION. — Fauna Europaea: Austria, Czech Republic, Finland, France, Germany, Italy, Norway, Poland, Romania, Russia, Slovakia, Sweden, Switzerland; INPN: no data; additional data from Psyl'list: Slovenia, Turkey, Ukraine.

COMMENTS

Description in Burckhardt (1986). Biology in Conci *et al.* (1996). Host-plants: *Anthriscus sylvestris* (L.) Hoffm., *Angelica sylvestris* L., *Chaerophyllum hirsutum* subsp. *villarsii* (Koch) Brique and *Heracleum sphondylium* L. (Apiaceae).

Trioza brachyceraea

Hodkinson & White, 1979

(Fig. 1G)

Trioza brachyceraea Hodkinson & White, 1979: 61; holotype male, France: Lozère, Gorges du Tarn, 25.V.1977 – *Genista hispanica* (I. M. White), (BMNH, slide mounted, examined).

Trioza (Trioza) rapisardai Conci & Tamanini, 1984: 201; holotype male, Italy: Piedmont, Susa Valley, near Cesana Torinese, 1330-1550 m, 1.VII.1984, *Laserpitium siler* (C. Conci) (Museo Civico di Storia Naturale di Milano, dry mounted, not examined). N. syn.

MATERIAL EXAMINED. — **France**. Alpes-Maritimes, Saint-Martin-Vésubie, M09-BOR1400-T7-M1, 1♀ (MNHN); Alpes-Maritimes, Saint-Dalmas-le-Selvage, M09-SES1400-T1-M2, 1♂, 3♀ (MNHN); same locality, M09-SES1400-T8-M2, 1♀ (MNHN); Alpes-Maritimes, Saorge, M10-CAI2000-T7-M1, 1♀ (BMNH).

DISTRIBUTION. — Fauna Europaea: France (report for *T. brachycerae* [sic]), Italy (report for *T. rapisardai*); INPN: no data; additional data from Psyllist: no additional data.

COMMENTS

Description in Hodkinson & White (1979b) and Conci & Tamanini (1984). Biology in Conci & Tamanini (1984) and Conci *et al.* (1996). Host-plant: *Laserpitium siler* L. and *Laserpitium gallicum* L. (Apiaceae). *Triozia brachycerae* has been known only from the holotype from France, while *T. rapisardai* was known from three places in the Susa Valley, Piedmont, in northern Italy. A comparison of the holotype of *T. brachycerae* with paratypes of *T. rapisardai* housed in the collections of the BMNH and MHNG showed that they are conspecific. We therefore consider *T. rapisardai* to be a junior subjective synonym of *T. brachycerae*.

Triozia caesaris

Burckhardt & Lauterer, 2002

Triozia caesaris Burckhardt & Lauterer, 2002: 22.

MATERIAL EXAMINED. — France. Alpes-Maritimes, Saint-Dalmas-le-Selvage, M09-SES2000-T8-M2, 1♂ (MNHN).

DISTRIBUTION. — Fauna Europaea: Austria, Czech Republic, France, Italy, Switzerland; INPN: observed in 1986 in Department of Haut-Rhin (data CardObs; square 10 kmL93E100N677); additional data from Psyllist: no additional data.

COMMENTS

Description and biology in Burckhardt & Lauterer (2002a). Host-plant: *Cardamine hirsuta* L. (Brassicaceae).

Triozia carpathica

Dobreanu & Manolache, 1959

Triozia apicalis carpathica Dobreanu & Manolache, 1959: 295.

MATERIAL EXAMINED. — France. Alpes-Maritimes, Saint-Dalmas-le-Selvage, M09-SES1400-T1-IN, 1♀ (MNHN).

DISTRIBUTION. — Fauna Europaea: France, Romania; INPN: no data; additional data from Psyllist: no additional data.

COMMENTS

Description in Dobreanu & Manolache (1959, 1962) and Burckhardt (1986). No data on biology. Host-plants: *Angelica archangelica* L. and *Daucus carota* L. (Apiaceae).

Triozia centranthi (Vallot, 1829)

Psylla centranthi Vallot, 1829: 106.

MATERIAL EXAMINED. — France. Alpes-de-Haute-Provence, Entraunes, Piste de la Cascade de l'Aiglière, 1420 m, 44°12'24.9732"N-6°44'33.4782"E, 14.VII.2011, on *Centranthus angustifolius* (Mill.) DC., C. Cocquempot (CBGP), 72 adults.

DISTRIBUTION. — Fauna Europaea: Austria, Belgium, Czech Republic, Denmark, France, Germany, Great Britain, Greece, Italy (mainland + Sardinia + Sicily), Malta, Moldova, Poland, Romania, Slovakia, Switzerland, Ukraine; INPN: observed in 2009 in Mercantour National Parc (data ATBI Mercantour; square 10 kmL93E106N633); additional data from Psyllist: Algeria, Caucasus, Hungary, Morocco, Slovenia, ex-Yugoslavia.

COMMENTS

Description in Hodkinson & White (1979a), Ossiannilsson (1992) and Burckhardt & Lauterer (2006). Biology in Ossiannilsson (1992) and Conci *et al.* (1996). Host-plants: several species of *Centranthus* and *Valerianella*, as well as *Fedia cornucopiae* Gaertn. (Caprifoliaceae).

Triozia cerastii (Linnaeus, 1758)

(Fig. 1H)

Chermes cerastii Linnaeus, 1758: 454.

MATERIAL EXAMINED. — France. Alpes-Maritimes, Valdeblore, M09-BOR2000-T7-M1, 1♂ (MNHN); Alpes-Maritimes, Saint-Dalmas-le-Selvage, M09-SES2000-T7-M2, 1♀ (MNHN); Alpes-Maritimes, Saorge, M10-CAI2000-T5-M1, 1♀ (MNHN); same locality, M10-CAI2000-T6-M2, 1♂, 1♀ (BMNH); Alpes-Maritimes, Lantosque, Piste du col du Fort, 1770 m, 44°0'43.9668"N-7°14'45.3546"E, 13.VII.2009, on *Larix decidua* Mill., C. Cocquempot (CBGP), 17 adults; Alpes-Maritimes, Lantosque, Granges de la Brasque, 1690 m, 44°0'28.6704"N-7°14'56.9106"E, 13.VII.2009, C. Cocquempot (CBGP), 17 adults; Alpes-Maritimes, Bolène-Vesubie, massif de la cime du Diable, 1800-2600 m, 28.VIII.1995, 1♂, 3♀, I. Malenovský (MMBC); Alpes-Maritimes, La Brigue, French-Italian border between Mt Grai (2013 m) and Cime de Marte (2135 m), 21.VIII.1996, 1♀, I. Malenovský (MMBC).

DISTRIBUTION. — Fauna Europaea: Austria, Czech Republic, Denmark, Finland, France, Germany, Italy, Norway, Poland, Romania, Russia, Slovakia, Spain (Balearic Is.), Sweden, Switzerland, Ukraine; INPN: no data; additional data from Psyllist: Bulgaria, China, Estonia, Hungary, Slovenia, Spain.

COMMENTS

Description in Ossiannilsson (1992). Biology in Ossiannilsson (1992) and Conci *et al.* (1996). Host-plants: several species of *Cerastium* (Caryophyllaceae).

Triozia cirsii Löw, 1881

Triozia cirsii Löw, 1881: 264.

MATERIAL EXAMINED. — France. Alpes-Maritimes, Saorge, M10-CAI1400-T5-M1, 1♂ (MNHN); same locality, M10-CAI1400-T6-M2, 1♀ (MNHN).

DISTRIBUTION. — Fauna Europaea: Austria, Bulgaria, Czech Republic, Denmark, Finland (doubtful), France, Germany, Greece, Moldova, Norway, Poland, Romania, Russia, Slovakia, Sweden, Switzerland, Ukraine; INPN: no data; additional data from Psyllist: Slovenia.

COMMENTS

Description in Ossiannilsson (1992) and Burckhardt & Lauterer (2002b). Biology in Ossiannilsson (1992) and Lauterer (1994). Host-plants: several species of *Cirsium* (Asteraceae).

Trioza flixiana Burckhardt & Lauterer, 2002
(Fig. 11)

Trioza flixiana Burckhardt & Lauterer, 2002: 800.

MATERIAL EXAMINED. — France. Alpes-Maritimes, Saint-Martin-Vésubie, M09-BOR1400-T1-M1, 1 ♀ (MNHN); same locality, M09-BOR1400-T2-M1, 1 ♀ (BMNH).

DISTRIBUTION. — Fauna Europaea: Austria, Czech Republic, Italy, Slovakia, Switzerland; INPN: no data; additional data from Psyl'list: Slovenia.

COMMENTS

Also reported from Spain on the GBIF portal. Description and elements of biology in Burckhardt & Lauterer (2002b). Host-plant: probably *Cirsium spinosissimum* (L.) Scop. (Asteraceae). New for France.

Trioza kiefferi Giard, 1902

Trioza kiefferi Giard, 1902: 121.

MATERIAL EXAMINED. — France. Alpes-Maritimes, Saorge, Malaise trap, M10-CAI1400-T6-M2, 1 ♀ (MNHN).

DISTRIBUTION. — Fauna Europaea: Italy (mainland + Sicily), Malta; INPN: no data; additional data from Psyl'list: Algeria, France, Portugal, Slovenia, ex-Yugoslavia.

COMMENTS

Description in Rapisarda (1989). Biology in Rapisarda (1989) and Conci *et al.* (1996). Host-plants: several species of *Rhamnus* (Rhamnaceae).

Trioza lautereriella Burckhardt, 1986

Trioza lautereriella Burckhardt, 1986: 424.

MATERIAL EXAMINED. — France. Alpes-Maritimes, Saorge, M10-CAI2000-T7-M1, 1 ♀ (MNHN).

DISTRIBUTION. — Fauna Europaea: France, Germany, Italy, Slovakia, Switzerland; INPN: no data; additional data from Psyl'list: no additional data.

COMMENTS

Description in Burckhardt (1986). Biology in Conci *et al.* (1996). Host-plants: *Angelica sylvestris* L. and *Daucus carota* L. (Apiaceae).

Trioza marginepunctata Flor, 1861

Trioza marginepunctata Flor, 1861: 396.

MATERIAL EXAMINED. — France. Alpes-Maritimes, Saorge, M10-CAI1400-T5-M2, 1 ♀ (MNHN); Alpes-Maritimes, Moulinet, Col de Turini, piste de Gasta-Fume, 1625 m, 43°58'27.1482"N-7°23'42.7374"E, 02.VII.2008, C. Cocquempot (CBGP), 1 adult.

DISTRIBUTION. — Fauna Europaea: France, Italy, Spain; INPN: no data; additional data from Psyl'list: Croatia, Hungary, Israel, Lebanon.

COMMENTS

Description and biology in Rapisarda (1989). Host-plant: *Rhamnus alaternus* L. (Rhamnaceae).

Trioza munda Foerster, 1848

Trioza munda Foerster, 1848: 88.

MATERIAL EXAMINED. — France. Alpes-Maritimes, Bolène-Vesubie, massif de la cime du Diable, 1800-2600 m, 28.VIII.1995, 1 ♂, I. Malenovský (MMBC).

DISTRIBUTION. — Fauna Europaea: Austria, Great Britain, Bulgaria, Czech Republic, France, Italy, Moldova, Norway, Poland, Romania, Slovakia, Sweden, Switzerland, Ukraine; INPN: no data; additional data from Psyl'list: Germany, Ireland, Japan, Mongolia, Russia (Amur), Slovenia.

COMMENTS

Description in Ossiannilsson (1992). Biology in Ossiannilsson (1992) and Conci *et al.* (1996). Host-plants: species of the genera *Knautia*, *Scabiosa* and *Succisa* (Caprifoliaceae).

Trioza proxima Flor, 1861

Trioza proxima Flor, 1861: 404.

MATERIAL EXAMINED. — France. Alpes-Maritimes, Bolène-Vesubie, massif de la cime du Diable, 1800-2600 m, 28.VIII.1995, 1 ♂, I. Malenovský (MMBC); Alpes-Maritimes, La Brigue, French-Italian border between Mt Grai (2013 m) and Cime de Marte (2135 m), 21.VIII.1996, 1 ♀, I. Malenovský (MMBC).

DISTRIBUTION. — Fauna Europaea: Austria, Great Britain, Bulgaria, Czech Republic, France, Germany, Italy, Poland, Russia, Slovakia, Spain (Balearic Is.), Switzerland; INPN: no data; additional data from Psyl'list: Belgium, Slovenia.

COMMENTS

Description in Hodkinson & White (1979) and Burckhardt (1983). Biology in Conci *et al.* (1996) and Lauterer & Malenovský (2002). Host-plants: several species of *Hieracium* (Asteraceae).

Trioza rhamni (Schrank, 1801)

Chermes rhamni Schrank, 1801: 141.

MATERIAL EXAMINED. — France. Alpes-Maritimes, Saint-Dalmas-le-Selvage, M09-SES1400-T1-M2, 1 ♀ (MNHN).

DISTRIBUTION. — Fauna Europaea: Austria, Czech Republic, Denmark, Finland, France, Germany, Great Britain, Italy, Moldova, Norway, Poland (doubtful), Romania, Russia, Slovakia, Spain, Sweden, Switzerland, Ukraine; INPN: no data; additional data from Psyl'list: Caucasus, Estonia, Hungary, Latvia, Slovenia, Turkey.

COMMENTS

Description in Hodkinson & White (1979a) and Ossiannilsson (1992). Biology in Ossiannilsson (1992), Conci *et al.*

(1996) and Lauterer (1999). Host-plants: *Rhamnus cathartica* L. and *Rhamnus pallasii* Fisch. & C. A. Mey. (Rhamnaceae).

Trioza rumicis Löw, 1880

Trioza rumicis Löw, 1880: 557.

MATERIAL EXAMINED. — France. Alpes-Maritimes, Saorge, M10-CAI2000-T7-M1, 1♀ (MNHN); Alpes-Maritimes, Bolène-Vesubie, massif de la cime du Diable, 1800-2600 m, 28.VIII.1995, 1♀ I. Malenovský (MMBC); Alpes-Maritimes, La Brigue, French-Italian border between Mt Grai (2013 m) and Cime de Marte (2135 m), 21.VIII.1996, 5♂, 3♀, I. Malenovský (MMBC).

DISTRIBUTION. — Fauna Europaea: Austria, France, Germany, Italy, Poland, Romania, Slovakia, Switzerland; INPN: no data; additional data from Psyl'list: Iran.

COMMENTS

Description in Dobreanu & Manolache (1962) and Klimaszewski (1967). Biology in Conci *et al.* (1996). Host-plants: several species of *Rumex* (Polygonaceae).

Trioza schrankii Flor, 1861

Trioza schrankii Flor, 1861: 403.

MATERIAL EXAMINED. — France. Alpes-Maritimes, Saorge, M10-CAI2000-T6-M1, 1♂ (BMNH); same locality, M10-CAI2000-T7-M1, 2♂ (MNHN).

DISTRIBUTION. — Fauna Europaea: Austria, Czech Republic, France, Germany, Italy, Poland, Romania, Slovakia, Switzerland, Ukraine; INPN: no data; additional data from Psyl'list: Slovenia.

COMMENTS

Description in Dobreanu & Manolache (1962) and Klimaszewski (1967) (for *T. schranki* [sic]). Biology in Conci *et al.* (1996) and Lauterer & Malenovský (2002). Host-plant: *Astrantia major* L. (Apiaceae).

Trioza senecionis (Scopoli, 1763)

Chermes senecionis Scopoli, 1763: 140.

MATERIAL EXAMINED. — France. Alpes-Maritimes, Saorge, M10-CAI1400-T3-M1, 1♀ (MNHN); same locality, M10-CAI1400-T7-M1, 1♂, 2♀ (BMNH); same locality, M10-CAI1400-T6-M2, 17♂, 7♀ (MNHN); same locality, M10-CAI1400-T7-M2, 27♂, 21♀ (MNHN).

DISTRIBUTION. — Fauna Europaea: Austria, Czech Republic, Germany, Italy, Poland, Romania, Slovakia, Switzerland, Ukraine; INPN: no data; additional data from Psyl'list: Slovenia.

COMMENTS

Description in Dobreanu & Manolache (1962) and Klimaszewski (1967). Biology in Conci *et al.* (1996). Three specimens reported from France in the GBIF portal. Host-plant: *Senecio fuchsii* C. C. Gmel. (Asteraceae) (sometimes treated as

subspecies of *nemorensis*) (Asteraceae). The suggestion that *Adenostyles* might be a host (Wagner & Franz 1961) could not be confirmed and this should be removed from the list of host-plants of *T. senecionis*.

Trioza urticae (Linnaeus, 1758)

Chermes urticae Linnaeus, 1758: 454.

MATERIAL EXAMINED. — France. Alpes-Maritimes, Saint-Martin-Vésubie, M09-BOR1400-T1-M2, 1♂, 1♀ (MNHN); same locality, M09-BOR1400-T2-M2, 4♂ (MNHN); same locality, M09-BOR1400-T8-M2, 1♀ (MNHN); same locality, M09-BOR1400-T1-M1, 5♂, 2♀ (MNHN); Alpes-Maritimes, Valdeblore, M09-SES2000-T2-M2, 1♀ (MNHN); Alpes-Maritimes, Saorge, M10-CAI1400-T1-M1, 2♂, 3♀ (MNHN); same locality, M10-CAI1400-T1-M2, 1♂, 7♀ (MNHN); same locality, M10-CAI1400-T2-M2, 1♂, 2♀ (MNHN); same locality, M10-CAI1400-T3-M2, 1♂ (MNHN); same locality, M10-CAI1400-T4-M2, 1♂ (MNHN); same locality, M10-CAI2000-T1-M2, 1♂ (MNHN); same locality, M10-CAI2000-T7-M2, 3♀ (MNHN); same locality, M10-CAI2000-T2-M1, 1♂ (MNHN); same locality, M10-CAI2000-T3-M1, 2♂ (MNHN); same locality, M10-CAI2000-T7-M1, 5♂, 2♀ (MNHN); Alpes-Maritimes, Moulinet, Col de Turini, piste de Gasta-Fume, 1625 m, 43°58'27.1482"N-7°23'42.7374"E, 02.VII.2008, C. Cocquempot (CBGP), 8 adults; Alpes-Maritimes, Moulinet, Col de Turini, 1610 m, 43°58'37.56"N-7°23'30.7782"E, 09.VII.2009, on herbaceous plants, C. Cocquempot (CBGP), 13 adults; Alpes-Maritimes, Lantosque, Col d'Andrion (Col du Fort), 1990 m, 44°1'3.8202"N-7°15'12.1206"E, 13.VII.2009, on *Epilobium angustifolium* L., C. Cocquempot (CBGP), 10 adults; Alpes-de-Haute-Provence, Colmars-les-Alpes, Ratéry, 1670 m, 44°11'16.5804"N-6°39'15.4548"E, 10.VII.2011, on *Urtica* sp., C. Cocquempot (CBGP), 3 adults.

DISTRIBUTION. — Fauna Europaea: Austria, Belgium, Bulgaria, Croatia, Cyprus, Czech Republic, Denmark, Finland, France, Germany, Great Britain, Greece, Ireland, Italy (mainland + Sardinia + Sicily), Malta, Moldova, Norway, Poland, Romania, Russia, Slovakia, Slovenia, Spain (mainland + Balearic Is.), Sweden, Switzerland, Ukraine; INPN: no data; additional data from Psyl'list: Afghanistan, Algeria, Caucasus, China, Hungary, India, Iran, Japan, Lithuania, Portugal (Madeira), Mongolia, Tadjikistan, Turkey, West Himalaya (Uttaranchal = Uttarakhand).

COMMENTS

Description in Hodkinson & White (1979a) and Ossiannilsson (1992). Biology in Ossiannilsson (1992), Lauterer (1994, 2011) and Conci *et al.* (1996). Host-plants: several species of *Urtica* (Urticaceae).

Trioza velutina Foerster, 1848

Trioza velutina Foerster, 1848: 87.

MATERIAL EXAMINED. — France. Alpes-Maritimes, Saorge, M10-CAI2000-T1-M1, 1♂ (BMNH); same locality, M10-CAI2000-T2-M1, 1♂ (MNHN); same locality, M10-CAI2000-T3-M1, 2♂ (MNHN); Alpes-Maritimes, Saint-Martin-Vésubie, M09-SES1400-T1-M1, 1♂, 2♀ (MNHN).

DISTRIBUTION. — Fauna Europaea: Austria, Czech Republic, France, Germany, Great Britain, Slovakia; INPN: no data; additional data from Psyl'list: Slovenia.

COMMENTS

Description in Burckhardt & Lauterer (2006). No precise data available on biology, since this species was confused with *Trioza galii* Foerster, 1848 in all works preceding the revision by Burckhardt & Lauterer (2006). Host-plants: unknown, probably several species of Rubiaceae, as for *T. galii*.

DISCUSSION

The psyllids collected in 2009, 2010 and 2011 during the ATBI+M project in the Mercantour National Park (together with the four species collected by I. Malenovský in the 1990's) comprise 68 species (40.2% of the 169 species reported from France in Fauna Europaea). Compared to the size of the Park, which covers only *c.* 0.12% of Metropolitan France, these results reflect the importance of such protected area for preserving ecosystems, especially in groups like psyllids that are closely dependant on the presence and abundance of their host-plants.

Seven of the species are new for France. In the case of *Craspedolepta artemisiae*, the data from Mercantour represent the westernmost record. *Craspedolepta nebulosa*, *Cacopsylla propinqua* and *Cyamophila probaskai* were already known from the Swiss (Burckhardt 1994b; Burckhardt *et al.* 2007; Schaefer 1949) and Italian Alps (Conci *et al.* 1993). *Trioza flixiana* is also known from the Swiss Alps (Burckhardt & Lauterer 2002b), but shows a larger area of distribution (Pyrenees, Spanish Basque Country; GBIF data) at a wider range of altitudes (Spain and Czech Republic). *Bactericera parastriola* was also known from the Swiss and Italian Alps, but also from Poland, Romania and Sweden (Conci *et al.* 1988), from Austria (Burckhardt & Lauterer 1997) and, more recently, from the Czech Republic (Lauterer & Malenovský 2002), indicating a boreomontane distribution. The presence of *Eryngiofaga refuga*, otherwise known only from Kazakhstan and West Siberia, remains to be confirmed, since only one male has been collected from Mercantour.

The range of altitudes in the Park, from 490–3143 m a.s.l., makes the potential psyllid fauna even richer than 67 species in the area, since only altitudes from 1421–2058 m have been sampled. That is why we find here several orophilous species like *Psylla alpina* (Pyrenees, Alps, Carpathians), *Trioza caesaris* (Alps), *Trioza schrankii* (Massif Central, Alps, Carpathians), *Trioza brachyceraea* (Massif Central, Alps), *Trioza senecionis* (Alps, Carpathians) and *Aphalara sauteri* (Alps and Andalusia according to Burckhardt & Lauterer 1997).

Other orophilous species found in the park that show a larger area of distribution, including Fennoscandia and/or expanding eastward, are: *Bactericera femoralis*, *Bactericera bohémica*, *Cacopsylla rhododendri*, *Psylla fusca*, *Trioza abdominalis*, *Trioza cerastii* and *Trioza proxima*. *Livilla pyrenaica* is present in the Pyrenees and the Alps, as well as in Algeria.

Two species, *Ctenarytaina eucalypti* and *Acizzia uncatoides*, originate from Australia and have been introduced into France on *Eucalyptus* (in the early 1980s) and on *Acacia* and *Albizzia*, respectively. Despite the presence of two males in a Malaise trap in this study, most populations of *C. eucalypti* have been controlled in eastern-southern France by the introduction of a specific parasitoid wasp, *Psyllaephagus pilosus* Noyes, 1988 (Malaua & Girardet 1997; Hodkinson 1999). *Calophya rhois* originates from East Asia, as does its host (*Cotinus coggygria*), and has probably been naturalised in France for a long time. *Livilla variegata* probably originates from eastern Europe, and its wide current distribution may be due to the use of *Laburnum* as an ornamental tree in many places in Europe. Another eucalyptus-feeding species originating from Australia, *Glycaspis brimblecombei* Moore, 1964, has recently been discovered in France (Cocquempot *et al.* 2012), in the southern part of the Alpes-Maritimes department, and could also be present in the Mercantour park on *Eucalyptus camaldulensis* Dehnh.

Several other orophilous species known from France have not been collected in the Mercantour, which may be due to the collecting methods used (mainly Malaise traps and limited net sweeping): *Cacopsylla corcontum* (Šulc, 1909), *C. elegantula* (Zetterstedt, 1840), *C. hippophaes* (Foerster, 1848), *C. myrtilli* (Wagner, 1947), *Bactericera bucegica* (Dobreanu & Manolache, 1962), *Trioza chrysanthemii* Löw, 1878, *T. dispar* Löw, 1878, *T. laserpitii* Burckhardt & Lauterer, 1982, *T. saxifragae* Löw, 1888, *T. rotundata* Flor, 1861 and *T. tatrensis* Klimaszewski, 1965.

Future fieldwork in the Mercantour National Park may lead to the discovery of several alpine or subalpine species never collected in France before, but present in bordering countries (Switzerland and Italy), such as *Livilla vicina* (Löw, 1886), *L. vittipennella* (Reuter, 1875), *Bactericera harrisoni* (Wagner, 1955), *Trioza remaudierei* Burckhardt & Lauterer, 2002, the rare *T. megacerca* Burckhardt, 1983 and *T. tripteridis* Burckhardt, Conci, Lauterer & Tamanini, 1991.

Cacopsylla iteophila is a rare and localised species (Conci & Tamanini 1990b) that feeds on *Salix*.

The most abundant species in Malaise traps, which are rarely used for collecting Psylloidea, were *Livilla pyrenaica*, *Trioza senecionis* and *Cacopsylla brunneipennis*. In sweep-net samples, the most common species were *Cacopsylla sorbi* and *C. artemisiae* (>100 specimens), followed by *Psyllopsis fraxinicola*, *Trioza centranthi* and *C. brunneipennis*.

Acknowledgements

The authors are grateful to Isabelle Meusnier and Antonin David (both CBGP, Montpellier, France) for processing molecular analyses (unpublished), and to Pavel Lauterer (Moravian Museum, Brno, Czech Republic) for confirming identifications. Special thanks to Igor Malenovský (Moravian Museum and Masaryk University, Brno, Czech Republic) for helpful review of this manuscript and for allowing us to add his own specimen data from the Mercantour.

REFERENCES

- BAIN C., LABIT B., MIMAUD J. & TANGUY M. 1976. — Résultats de l'expérimentation effectuée en 1975 par le service de la protection des végétaux. II. Lutte contre les ravageurs et les maladies. *Phytoma* 28 (282): 7-13.
- BALACHOWSKY A. & MESNIL L. 1935. — Les insectes nuisibles aux plantes cultivées. t. 1. Etablissements Busson, Paris: 1136 p.
- BÉGUINOT J. 2002. — Contribution au recensement de la faune céci-dogène d'altitude dans le bassin de l'Ubaye (Alpes sud-occidentales françaises). *Bulletin de la Société linnéenne de Lyon*, 71 (2): 65-74.
- BIN F. 1972. — Presenza in Italia della *Trioza femoralis* Foerster (Rhynchota, Psyllidae) e notizie su due Chalcidoidei suoi parassiti. *Entomologica* 8: 45-53.
- BURCKHARDT D. 1983. — Beiträge zur Systematik und Faunistik der schweizerischen Psylloidea (Sternorrhyncha). *Entomologica Basiliensia* 8: 43-83.
- BURCKHARDT D. 1986. — Taxonomy and host plant relationships of the *Trioza apicalis* Forster complex (Hemiptera, Homoptera: Triozidae). *Entomologica Scandinavica* 16 (4): 415-432.
- BURCKHARDT D. 1994a. — Psyllid pests of temperate and subtropical crop and ornamental plants (Hemiptera, Psylloidea): A review. *Entomology (Trends in Agricultural Science)* 2: 173-186.
- BURCKHARDT D. 1994b. — Notes sur la répartition en Suisse de quelques espèces de psylles (Hemiptera, Psylloidea). *Bulletin Romand d'Entomologie* 12 (2): 109-115.
- BURCKHARDT D. 1998. — *Ctenarytaina eucalypti* (Maskell) (Hemiptera, Psylloidea) neu für Mitteleuropa mit Bemerkungen zur Blattflohfauna von *Eucalyptus*. *Mitteilungen der entomologischen Gesellschaft Basel* 48 (2): 59-67.
- BURCKHARDT D. 1999. — *Cacopsylla pulchella* (Löw), eine Blattfloh des Judasbaum, auch in Basel (Hemiptera, Psylloidea). *Mitteilungen der entomologischen Gesellschaft Basel* 49 (2): 71-76.
- BURCKHARDT D. 2004. — Fauna Europaea: Psylloidea. Fauna Europaea version 1.0, <http://www.faunaeur.org>
- BURCKHARDT D. 2010. — Pictorial key of Central European *Cacopsylla* species associated with Rosaceae, <http://www.psyllidkey.com/index.html>
- BURCKHARDT D. & HODKINSON P. 1986. — A revision of the west Palaearctic pear psyllids (Hemiptera: Psyllidae). *Bulletin of Entomological Research* 76 (1): 119-132.
- BURCKHARDT D. & LAUTERER P. 1997. — A taxonomic reassessment of the triozid genus *Bactericera* (Hemiptera: Psylloidea). *Journal of Natural History* 31(1): 99-153.
- BURCKHARDT D. & LAUTERER P. 2002a. — Revision of the central European *Trioza rotundata* Flor complex (Hemiptera, Psylloidea): taxonomy and bionomy. *Mitteilungen der schweizerischen entomologischen Gesellschaft* 75 (1-2): 21-34.
- BURCKHARDT D. & LAUTERER P. 2002b. — *Trioza flixiana* sp. n. (Hemiptera, Psylloidea), a new jumping plant-louse species from Central Europe. *Revue suisse de Zoologie* 109 (4): 799-802.
- BURCKHARDT D. & LAUTERER P. 2006. — The Palaearctic triozids associated with Rubiaceae (Hemiptera, Psylloidea): a taxonomic re-evaluation of the *Trioza galii* Foerster complex. *Revue suisse de Zoologie* 113 (2): 269-286.
- BURCKHARDT D. & OUVRARD D. 2012. — A revised classification of the jumping plant-lice (Hemiptera: Psylloidea). *Zootaxa* 3509: 1-34.
- BURCKHARDT D., MÜHLETHALER R., LAUTERER P., MALENOVSKÝ I. & KUNZ G. 2007. — Die Blattflöhe und Zikaden der Alp Flix (Insecta, Hemiptera: Psylloidea und Auchenorrhyncha). *Jahresbericht der Naturforschenden Gesellschaft Graubünden* 114: 91-97.
- CARRARO L., OSLER R., LOI N., ERMACORA P. & REFATTI E. 1998. — Transmission of european stone fruit yellows phytoplasma by *Cacopsylla pruni*. *Journal of Plant Pathology* 80: 233-239.
- COCQUEMPOT C., MALAUSA J.-C., THAON M. & BRANCACCIO L. 2012. — Le Psylle du Gommier rouge (*Glycaspis brimblecombei* Moore) introduit sur les eucalyptus de France (Hemiptera, Psyllidae). *Bulletin de la Société entomologique de France* 117 (3): 363-370.
- CONCI C. & TAMANINI L. 1982. — *Psylla limbata*, nuova per l'Italia, da *Rhamnus alpinus* (Homoptera Psylloidea). *Atti della Società Italiana di Scienze Naturali e del Museo Civico di Storia Naturale in Milano* 123 (4): 483-494.
- CONCI C. & TAMANINI L. 1984. — *Trioza (Trioza) rapisardai* n. sp., from Piemonte, host plant *Laserpitium siler* (Homoptera Psylloidea). *Atti della Società Italiana di Scienze Naturali e del Museo Civico di Storia Naturale in Milano* 125 (3-4): 201-208.
- CONCI C. & TAMANINI L. 1985. — *Bactericera harrisoni* in Italy, and comparison with *B. bohémica* (Homoptera Psylloidea). *Annali dei Musei civici, Rovereto* 1: 99-110.
- CONCI C. & TAMANINI L. 1986a. — *Cacopsylla propinqua*, from Valle d'Aosta, new for Italy (Homoptera Psylloidea). *Doriana* 6: 1-8.
- CONCI C. & TAMANINI L. 1986b. — *Cyamophila probaskai* from Alto Adige and Trentino, genus and species new for Italy (Homoptera: Psylloidea). *Studi Trentini di Scienze Naturali Acta Biologica* 62: 59-68.
- CONCI C. & TAMANINI L. 1988. — Seven species of psylloidea new for Italy. *Annali dei Musei civici, Rovereto* 4: 307-320.
- CONCI C. & TAMANINI L. 1989a. — Life history, nymphs and egg of *Cyamophila probaskai*, host plant *Anthyllis vulneraria* ssp. *alpestris*. *Studi Trentini di Scienze Naturali, Acta Biologica* 65 (1988): 137-146.
- CONCI C. & TAMANINI L. 1989b. — Rare or interesting species of Italian Psylloidea. I. *Atti dell'Accademia Roveretana degli Agiati* 238 (1988): 47-72.
- CONCI C. & TAMANINI L. 1990a. — Notes on the genus *Psyllopsis* (Homoptera Psylloidea). *Atti della Accademia Roveretana degli Agiati* 29: 57-85.
- CONCI C. & TAMANINI L. 1990b. — *Cacopsylla iteophila* in Alto Adige and Trentino, new for Italy (Homoptera Psylloidea). *Annali dei Musei civici, Rovereto* 5 (1989): 205-218.
- CONCI C., OSSIANILSSON F. & TAMANINI L. 1988 — *Bactericera parastriola* sp. n., from *Salix phylicifolia*, *lapponum* and *waldsteiniana*, in Sweden and Italy (Homoptera Psylloidea). *Atti della Società italiana di scienze naturali e del museo civico di storia naturale di Milano* 129 (2-3): 225-236.
- CONCI C., RAPISARDA C. & TAMANINI L. 1993. — Annotated catalogue of the Italian Psylloidea. First part. (Insecta Homoptera). *Atti della Accademia Roveretana degli Agiati Serie 7 B Classe di Scienze Matematiche Fisiche e Naturali* 2B: 33-135.
- CONCI C., RAPISARDA C. & TAMANINI L. 1996. — Annotated catalogue of the Italian Psylloidea. Second part (Insecta Homoptera). *Atti della Accademia Roveretana degli Agiati Serie 7 B Classe di Scienze Matematiche Fisiche e Naturali* 5B: 5-207.
- COTTE J. 1915. — Une randonnée dans les Basses-Alpes. *Annales du Muséum d'Histoire naturelle de Marseille*, 15 (3): 21 p.
- DEHARVENG L., BEDOS A., DAUGERON C., VILLEMANT C. & JUDSON M. L. I. 2015. — Organization, usefulness and limitations of an ATBI (All Taxa Biodiversity Inventory): the inventory of terrestrial invertebrates in the Mercantour National Park, in Daugeron C., Deharveng L., Isaia M., Villemant C. & Judson M. (eds), *Mercantour/Alpi Marittime All Taxa Biodiversity Inventory*. *Zoosystema* 37 (1): 9-30. <http://dx.doi.org/10.5252/z2015n1a1>
- DOBREANU E. & MANOLACHE C. 1959. — Nouvelle contribution à la connaissance des Psylles (Psylloidea-Trioziinae). *Revue de Biologie* 4: 279-299.
- DOBREANU E. & MANOLACHE C. 1962. — *Insecta. Homoptera Psylloidea. Fauna Republicii Populare Romine. Vol. 8, Fascicula 3*. Academiei Republicii Populare Romine, Bucuresti, 377 p.
- HODKINSON I. D. 1999. — Biocontrol of eucalyptus psyllid *Ctenarytaina eucalypti* by the Australian parasitoid *Psyllaephagus pilosus*: a review of current programmes and their success. *Biocontrol News and Information* 20 (4): 129N 134N.
- HODKINSON I. D. & WHITE I. M. 1979a. — *Homoptera Psylloidea. Handbooks for the Identification of British Insects, Volume 2, Part 5(a)*. Royal Entomological Society of London, London, 98 p.
- HODKINSON I. D. & WHITE I. M. 1979b. — New psyllids from

- France with redescrptions of the type species of *Floria* Löw and *Amblyrhina* Löw (Homoptera: Psylloidea). *Entomologica scandinavica* 10 (1): 55-63.
- HODKINSON I. D. & HOLLIS D. 1980. — *Floria variegata* Löw (Homoptera: Psylloidea) in Britain. *Entomologists Gazette* 31 (3): 171, 172.
- HODKINSON I. D. & HOLLIS D. 1981. — The psyllids (Homoptera: Psylloidea) of Mallorca. *Entomologica scandinavica* 12 (1): 65-77.
- HODKINSON I. D. & HOLLIS D. 1987. — The legume-feeding psyllids (Homoptera) of the west Palaearctic region. *Bulletin of the British Museum (Natural History) Entomology series* 56 (1): 1-86.
- KLIMASZEWSKI S. M. 1963. — Polnische Arten der Gattung *Psylla* Geoff. (Homoptera, Psyllidae). *Annales Zoologici (Warsaw)* 20 (20): 363-455.
- KLIMASZEWSKI S. M. 1967. — Polnische Arten der Familie Triozidae (Homoptera: Psylloidea). *Annales Zoologici (Warsaw)* 25 (3): 227-315.
- KLIMASZEWSKI S. M. 1983. — Revision of the Palaearctic species of the genus *Craspedolepta* Enderl. s. l. (Homoptera, Aphalaridae). *Polskie Pismo Entomologiczne* 53 (1-2): 3-29.
- KONOVALOVA Z. A. 1988. — 2. Suborder Psyllinea, in LER P. A. (ed.), *Key to the Identification of Insects of the Soviet Far East, Volume 2, Homoptera and Heteroptera*. Nauka, Leningrad: 495-540.
- LAUTERER P. 1976. — Psyllids of Wetland Nature Reserves of the German Democratic Republic, with Notes on Their Biology, Taxonomy and Zoogeography (Homoptera, Psylloidea). *Faunistische Abhandlungen (Staatliches Museum für Tierkunde in Dresden)* 6 (10): 111-122.
- LAUTERER P. 1979. — New and interesting records of psyllids from Czechoslovakia (Homoptera, Psylloidea). *Acta Musei Moraviae Scientiae Naturales* 64: 93-102.
- LAUTERER P. 1993. — Notes on the bionomics and occurrence of some psyllids (Homoptera, Psylloidea) in Czechoslovakia and the Balkan Peninsula. *Acta Musei Moraviae Scientiae Naturales* 77 (1-2): 147-156.
- LAUTERER P. 1994. — Psyllids (Homoptera, Psylloidea) from the area flooded by the Nove Mlýny reservoir system and its environs in southern Moravia. *Acta Musei Moraviae Scientiae Naturales* 78 (1-2): 165-200.
- LAUTERER P. 1998. — Results of the investigations on Hemiptera in Moravia, made by the Moravian museum (Introduction, Psylloidea I). *Acta Musei Moraviae Scientiae Biologicae* 83 (1-2): 99-126.
- LAUTERER P. 1999. — Results of the investigations on Hemiptera in Moravia, made by the Moravian museum (Psylloidea 2). *Acta Musei Moraviae Scientiae Biologicae* 84 (1-2): 71-151.
- LAUTERER P. 2011. — Psyllids (Hemiptera, Psylloidea) inhabiting the canopy and shrub layer of an oak and hornbeam forest in Báb near Nitra (Slovakia). *Folia Faunistica Slovaca* 16 (2): 97-101.
- LAUTERER P. & MALENOVSKÝ I. 2002. — New distributional and biological data on European Psylloidea (Hemiptera, Sternorrhyncha), with special reference to the fauna of the Czech Republic and Slovakia. *Entomologica Basiliensia* 24: 161-177.
- LOGINOVA M. M. 1963. — Revision of the species of the genera *Aphalara* Frst. and *Craspedolepta* Enderl. (Homoptera, Psylloidea) in the fauna of the USSR. II. *Entomological Review* 42 (3): 334-346.
- LOGINOVA M. M. 1966. — New and little-known Psyllids (Homoptera, Psylloidea) from the USSR. *Trudy Zoologicheskogo Instituta* 37: 3-35.
- LOGINOVA M. M. 1975. — Representatives of the genus *Psylla* (Homoptera, Psylloidea) developing on *Rhamnus* and *Cerasus*. *Zoologicheskyy Zhurnal* 54 (5): 701-711.
- MALAUSSA J. C. & GIRARDET N. 1997. — Lutte biologique contre le psylle de l'eucalyptus: acclimatation sur la Côte d'Azur d'un auxiliaire prometteur, *Psyllaephagus pilosus*. *Phytoma – La Défense des Végétaux* 498: 49-51.
- MALENOVSKÝ I. & KMENT P. 2004. — First record of *Livilla variegata* (Low, 1881) (Hemiptera: Psylloidea, Psyllidae) in Slovakia. *Biologia (Bratislava)* 59 (2): 292.
- MERCIER L. & POISSON R. 1926. — Un Hémiptère Homoptère, de la famille des Psyllines, parasite d'*Eucalyptus* cultivés à Cherbourg. *Bulletin de la Société Linnéenne de Normandie Series* 7 (9): 34-37.
- OSSIANNILSSON F. 1992. — *The Psylloidea (Homoptera) of Fennoscandia and Denmark. Fauna Entomologica Scandinavica, Volume 26*. E. J. Brill, Leiden, New York, 346 p.
- OUVRARD D. 2014. — Psyl'list – The World Psylloidea Database. <http://www.hemiptera-databases.com/psyllist> – searched on 24 March 2014.
- PECCOD J., LABONNE G. & SAUVION N. 2013. — Molecular Test to Assign Individuals within the *Cacopsylla pruni* Complex. *PLoS ONE* 8 (8): e72454.
- PERAGALLO A. 1881. — Insectes nuisibles aux oliviers. *Annales de la Société entomologique de France, Bulletin des Séances*, 1881: LXXI-LXXII.
- QUEIROZ D. L., BURCKHARDT D. & MAJER J. 2012. — Integrated Pest Management of Eucalypt Psyllids (Insecta, Hemiptera, Psylloidea), in LARRAMENDY M. L. & SOLONESKI S. (eds), *Integrated Pest Management and Pest Control – Current and Future Tactics*. InTech, Rijeka: 385-412.
- RAPISARDA C. 1987. — Nymphal description and biological notes on some species of psyllids new for the Italian fauna (Homoptera, Psylloidea). *Phytophaga* 2 (1984): 57-72.
- RAPISARDA C. 1989. — Contributo alla conoscenza degli Psilloidei viventi su *Rhamnus alaternus* L. in Italia (Homoptera). *Phytophaga* 3 (1985-89): 21-60.
- RAPISARDA C. & CONCI C. 1989. — Faunistic notes and zoogeographical considerations on the psyllid fauna of the south-eastern Alps. *Biogeographia* 13: 623-639.
- RISSO A. 1826. — *Histoire naturelle des principales productions de l'Europe méridionale et particulièrement de celles des environs de Nice et des Alpes-Maritimes*, 5. Librairie Levrault, Paris & Strasbourg: 400 p.
- SCHAEFER H. A. 1949. — Beiträge zur Kenntnis der Psylliden der Schweiz. *Mitteilungen der schweizerischen entomologischen Gesellschaft* 22 (1): 1-96.
- SELJAK G., MALENOVSKÝ I. & LAUTERER P. 2008. — New records of jumping plant-lice from Slovenia with description of *Bactericera lyrata* sp. n. (Hemiptera: Psylloidea). *Revue suisse de Zoologie* 115 (3): 527-540.
- ŠULC K. 1913. — Monographia generis *Trioza* Foerster. Species regionis palaearticae. Pars IV., No. 36.-49. *Sitzungsberichte der königlichen böhmischen Gesellschaft der Wissenschaften* 1913 (1): 1-48.
- TAMANINI L. 1977. — Notizie corologiche e morfologiche su alcuni psillidi poco noti delle prealpi (Homoptera Psylloidea). *Studi Trentini di Scienze Naturali Acta Biologica* 54: 103-119.
- VONDRÁČEK K. 1950. — To the revision of Melichar's collection of jumping plant lice (Psyllinea). *Acta Musei Moraviae* 35: 183-189.
- VONDRÁČEK K. 1957. — *Mery-Psilloidea (Fauna CSR, Svazek 9). [Jumping plant lice – Psylloidea. (Fauna of Czechoslovakia, Volume 9)]*. Československa Akademie Ved., Praha, 431 p.
- WAGNER W. 1947. — Neue deutsche Homopteren und Bemerkungen über schon bekannte Arten. *Verhandlungen des Vereins für naturwissenschaftliche Heimatforschung zu Hamburg* 29 (1947): 72-89.
- WAGNER W. & FRANZ H. 1961. — Überfamilie Sternorrhyncha (Psylloidea), in FRANZ, H. (ed), *Die Nordost-Alpen im Spiegel Ihrer Landtierwelt. Eine Gebietsmonographie umfassend: Fauna, Faunengeschichte, Lebensgemeinschaften und Beeinflussung der Tierwelt durch den Menschen*, Vol. 2. Universitätsverlag Wagner, Innsbruck: 158-179.

Submitted on 27 May 2014;
accepted on 4 December 2014;
published on 27 March 2015.