

## New records of Lamiaceae from China and Uzbekistan

Yue ZHAO, Orzimat T. TURGINOV,  
Obidjon A. TURDIBOEV, Sardor O. PULATOV,  
Ya-Ping CHEN & Chun-Lei XIANG



DIRECTEUR DE LA PUBLICATION / *PUBLICATION DIRECTOR*: Gilles Bloch  
Président du Muséum national d'Histoire naturelle

RÉDACTEUR EN CHEF / *EDITOR-IN-CHIEF*: Thierry Deroin

RÉDACTEURS / *EDITORS*: Porter P. Lowry II; Zachary S. Rogers

ASSISTANT DE RÉDACTION / *ASSISTANT EDITOR*: Emmanuel Côté (adanson@mnhn.fr)

MISE EN PAGE / *PAGE LAYOUT*: Emmanuel Côté

COMITÉ SCIENTIFIQUE / *SCIENTIFIC BOARD*:

P. Baas (Nationaal Herbarium Nederland, Wageningen)  
F. Blasco (CNRS, Toulouse)  
M. W. Callmänder (Conservatoire et Jardin botaniques de la Ville de Genève)  
J. A. Doyle (University of California, Davis)  
P. K. Endress (Institute of Systematic Botany, Zürich)  
P. Feldmann (Cirad, Montpellier)  
L. Gautier (Conservatoire et Jardins botaniques de la Ville de Genève)  
F. Ghahremaninejad (Kharazmi University, Téhéran)  
K. Iwatsuki (Museum of Nature and Human Activities, Hyogo)  
A. A. Khapugin (Tyumen State University, Russia)  
J.-Y. Lesouef (Conservatoire botanique de Brest)  
P. Morat (Muséum national d'Histoire naturelle, Paris)  
J. Munzinger (Institut de Recherche pour le Développement, Montpellier)  
S. E. Rakotoarisoa (Millenium Seed Bank, Royal Botanic Gardens Kew, Madagascar Conservation Centre, Antananarivo)  
P. H. Raven (Missouri Botanical Garden, St. Louis)  
G. Tohmé (Conseil national de la Recherche scientifique Liban, Beyrouth)  
J. G. West (Australian National Herbarium, Canberra)  
J. R. Wood (Oxford)

COUVERTURE / *COVER*:

Réalisée à partir des Figures de l'article/*Made from the Figures of the article.*

*Adansonia* est indexé dans / *Adansonia is indexed in*:

- Science Citation Index Expanded (SciSearch®)
- ISI Alerting Services®
- Current Contents® / Agriculture, Biology, and Environmental Sciences®
- Scopus®

*Adansonia* est distribué en version électronique par / *Adansonia is distributed electronically by*:

- BioOne® (<http://www.bioone.org>)

*Adansonia* est une revue en flux continu publiée par les Publications scientifiques du Muséum, Paris  
*Adansonia is a fast track journal published by the Museum Science Press, Paris*

Les Publications scientifiques du Muséum publient aussi / *The Museum Science Press also publish*: *Geodiversitas, Zoosystema, Anthropolzoologica, European Journal of Taxonomy, Naturae, Cryptogamie* sous-sections *Algologie, Bryologie, Mycologie, Comptes Rendus Palevol*

Diffusion – Publications scientifiques Muséum national d'Histoire naturelle  
CP 41 – 57 rue Cuvier F-75231 Paris cedex 05 (France)  
Tél. : 33 (0)1 40 79 48 05 / Fax: 33 (0)1 40 79 38 40  
diff.pub@mnhn.fr / <http://sciencepress.mnhn.fr>

© Publications scientifiques du Muséum national d'Histoire naturelle, Paris, 2024  
ISSN (imprimé / *print*): 1280-8571/ ISSN (électronique / *electronic*): 1639-4798

# New records of Lamiaceae from China and Uzbekistan

**Yue ZHAO**

CAS Key Laboratory for Plant Diversity and Biogeography of East Asia, Kunming Institute of Botany, Chinese Academy of Sciences, Kunming 650201, Yunnan (China)  
and Ministry of Education Key Laboratory of Ecology and Resource Use of the Mongolian Plateau & Inner Mongolia Key Laboratory of Grassland Ecology, School of Ecology and Environment, Inner Mongolia University, Hohhot 010000, Inner Mongolia (China)  
zhaoyue@mail.kib.ac.cn

**Orzimat T. TURGINOV**

Institute of Botany of the Academy of Sciences of the Republic of Uzbekistan,  
Durmon yuli str. 32 100125, Tashkent (Uzbekistan)  
and Faculty of Biology, Department of Botany and Plant physiology,  
National University of Uzbekistan named after Mirzo Ulugbek, Tashkent 100174 (Uzbekistan)  
orzimat@mail.ru (corresponding author)

**Obidjon A. TURDIBOEV**

Kokand State Pedagogical Institute, 150700 Turon Str. 23, Kokand (Uzbekistan)  
turdiboyev.obidjon@mail.ru

**Sardor O. PULATOV**

Institute of Botany of the Academy of Sciences of the Republic of Uzbekistan,  
Durmon yuli str. 32 100125, Tashkent (Uzbekistan)  
sardor7244@mail.ru (corresponding author)

**Ya-Ping CHEN**

**Chun-Lei XIANG**

CAS Key Laboratory for Plant Diversity and Biogeography of East Asia, Kunming Institute of Botany, Chinese Academy of Sciences, Kunming 650201, Yunnan (China)  
chenyaping@mail.kib.ac.cn  
xiangchunlei@mail.kib.ac.cn (corresponding author)

Submitted on 17 April 2023 | accepted on 29 May 2023 | published on 22 January 2024

Zhao Y., Turginov O. T., Turdiboev O. A., Pulatov S. O., Chen Y.-P. & Xiang C.-L. 2024. — New records of Lamiaceae from China and Uzbekistan. *Adansonia*, sér. 3, 46 (2): 9-17. <https://doi.org/10.5252/adansonia2024v46a2>. <http://adansonia.com/46/2>

## ABSTRACT

Geographic novelties of three species of Lamiaceae are reported in this paper. *Scutellaria repens* Buch.-Ham. ex D.Don, previously only known from India, Myanmar, Nepal, and Pakistan, is documented from Tibet, China for the first time. *Lamium purpureum* L., previously known as widely distributed in Eurasia (but not Uzbekistan) and North Africa, and *Dracocephalum baldshuanicum* (Gontsch.) A.L.Budantzev, previously only known from Afghanistan, Iran, Kirgizstan, Tajikistan, Turkmenistan, are newly reported from Uzbekistan. Diagnostic characters, detailed illustrations, and updated distributions of the three species are provided. In addition, lectotypes for *Dracocephalum baldshuanicum* are designated.

## KEY WORDS

Central Asia,  
Lamioideae,  
Nepetoideae,  
*Lamium*,  
*Dracocephalum*,  
*Scutellaria*,  
lectotypification.



## RÉSUMÉ

*Signalements nouveaux de Lamiaceae de Chine et d'Ouzbékistan.*

De nouveaux signalements géographiques sont indiqués pour trois espèces de Lamiaceae dans cet article. *Scutellaria repens* Buch.-Ham. ex D. Don, précédemment connue uniquement de l'Inde, du Myanmar, du Népal et du Pakistan, est documentée pour la première fois au Tibet, en Chine. *Lamium purpureum* L., réputé largement présent en Eurasie (mais pas en Ouzbékistan) et en Afrique du Nord, et *Dracocephalum baldshuanicum* (Gontsch.) A.L. Budantzev, rapportés jusqu'alors uniquement d'Afghanistan, d'Iran, du Kirgizstan, du Tadjikistan et du Turkménistan, sont nouvellement signalés en Ouzbékistan. Les caractères diagnostiques, des illustrations détaillées et les distributions actualisées des trois espèces sont fournis. En outre, les lectotypes de *Dracocephalum baldshuanicum* sont désignés.

## MOTS CLÉS

Asie centrale,  
Lamioideae,  
Nepetoideae,  
*Lamium*,  
*Dracocephalum*,  
*Scutellaria*,  
lectotypification.

## INTRODUCTION

The Lamiaceae are one of the largest flowering plant families, with over 230 genera and 7 000 species worldwide (Harley *et al.* 2004; Olmstead 2021; Zhao *et al.* 2021a). Species of Lamiaceae are of major economic importance and widely used as cosmetics, ornamentals, and culinary and medicinal herbs. During the past decade, we have been re-examining species diversity and phylogenetic relationships of Lamiaceae in Asia (Xiang *et al.* 2013; Chen *et al.* 2014; Zhao *et al.* 2017; Chen *et al.* 2019a, b, 2020; Zhao *et al.* 2021a, b, c; Zhao *et al.* 2022). During field expeditions between 2019 to 2022, we collected one species each of *Scutellaria* L., *Lamium* L. and *Dracocephalum* L. that did not match species described in local floras; we confirmed they are new distribution records for two Asian countries (China and Uzbekistan).

The genus *Scutellaria* is one of the largest genera within Lamiaceae, comprising approximately 360 species and widely distributed globally (Paton 1990; Harley *et al.* 2004; Paton *et al.* 2016; Zhao *et al.* 2017; WFO 2023). China is perhaps the center of diversity of the genus, harboring more than 100 species (Li 1977; Li & Hedge 1994). *Lamium* is the type genus of subfamily Lamioideae and the Lamiaceae, consisting of 34 species, primarily distributed in Eurasia, North Africa (including Macaronesia), and Central and East Asia (Harley *et al.* 2004; Zhao *et al.* 2021b; Celep *et al.* 2022). *Dracocephalum* comprises approximately 70 species primarily distributed in temperate Eurasia (Wu & Wang 1977; Harley *et al.* 2004; Chen *et al.* 2021). Recently Chen *et al.* (2022) expanded the genus to include *Lallemantia* Fisch. & C. A. Mey and *Hyssopus* L. In addition to the report of newly recorded species of these genera, we also provide taxonomic notes for each of the species in this paper.

## MATERIAL AND METHODS

In order to clarify species diversity within Lamiaceae from China and Uzbekistan, we have conducted extensive fieldwork as well as examination of herbarium material. We examined

specimens of Lamiaceae from the B, BM, C, CAL, CDBI, DR, E, FI, GH, GMU, HIB, IBSC, K, KUN, KYO, L, LE, LINN, LUCCA, M, MA, MAO, MICH, MO, MW, NAS, P, PE, PI, S, SG, TASH, TI, U, US, W, WU, WUK and XJBI (herbarium acronyms followed Thiers 2023) herbaria, as well as our own collections from the field.

## SYSTEMATICS

Family LAMIACEAE Martinov  
Genus *Scutellaria* L.

*Scutellaria repens* Buch.-Ham. ex D. Don  
(Figs 1; 2)

*Prodromus Florae Nepalensis*: 110 (Don *et al.* 1825).

TYPE MATERIAL. — Nepal • Narainhetty; *Hamilton, s.n.*; holo-, CAL[CAL0000020538] photo!

PHENOLOGY. — Flowering from September to April, fruiting from October to May.

DISTRIBUTION AND HABITAT. — China, India, Myanmar, Nepal, Pakistan; new record for China, occurring in Gyirong County, Xizang (Tibet). Growing on grassy slopes, 900–2200 m.

ETYMOLOGY. — The specific epithet refers to the often prostrate stems.

COMMON NAME (assigned here). — Jilong Huang Qin (吉隆黄芩; Chinese name).

ADDITIONAL SPECIMENS EXAMINED. — China • Xizang, Shigatse, Gyirong County, Resuo Village; 15.IX.2019; *Y.P. Chen, Y. Zhao & B.Y. Zhang EM 1201*; KUN!

Nepal • 1821; *N. Wallich 2141.1*; K[K001115294] (photo!) • 1821; *N. Wallich 2141*; K[K001115297, K000820749] (photo!) • Pokhara region, trekking route from Nayapul to Tikhedhunga, Hill slope facing south, near the road; 13.XI.2008; *A. Sukhorukov s.n.*; MW[MW0746728] (photo!) • Kathmandu, territory of the Botanical Garden, hillside, in shrubs on moist soil; 15.XI.2005; *A. Sukhorukov, s.n.*; MW[MW0746729] (photo!) • Dhawalagiri Zone; 22.IX.1996; *M. Mikage et al. 9684297*; L[L4404858] (photo!).  
India. Calcutta Botanic Garden (cultivated); *N. Wallich 2141.3*;



FIG. 1. — *Scutellaria repens* Buch.-Ham. ex D.Don: **A**, habit; **B, C**, inflorescences; **D-F**, flowers. Photographed by Y. P. Chen.

K[K001115296] (photo!) • 1821, *N. Wallich 2141*; K[K000820753] (photo!) • Paprola, Kangra District, Punjab; 22.XI.1936; *Walter Koelz 10314*; MICH[MICH1519301] (photo!) • Bhadwar, Kan-

gra, Punjab; 19.IV.1933; *Koelz 4156*; MICH[MICH1519303] (photo!), US[US02770122] (photo!) • Himachal Pradesh, Kullu; 28.XII.1930; *Koelz 1540*; MICH[MICH1519302] (photo!) • Kangra;

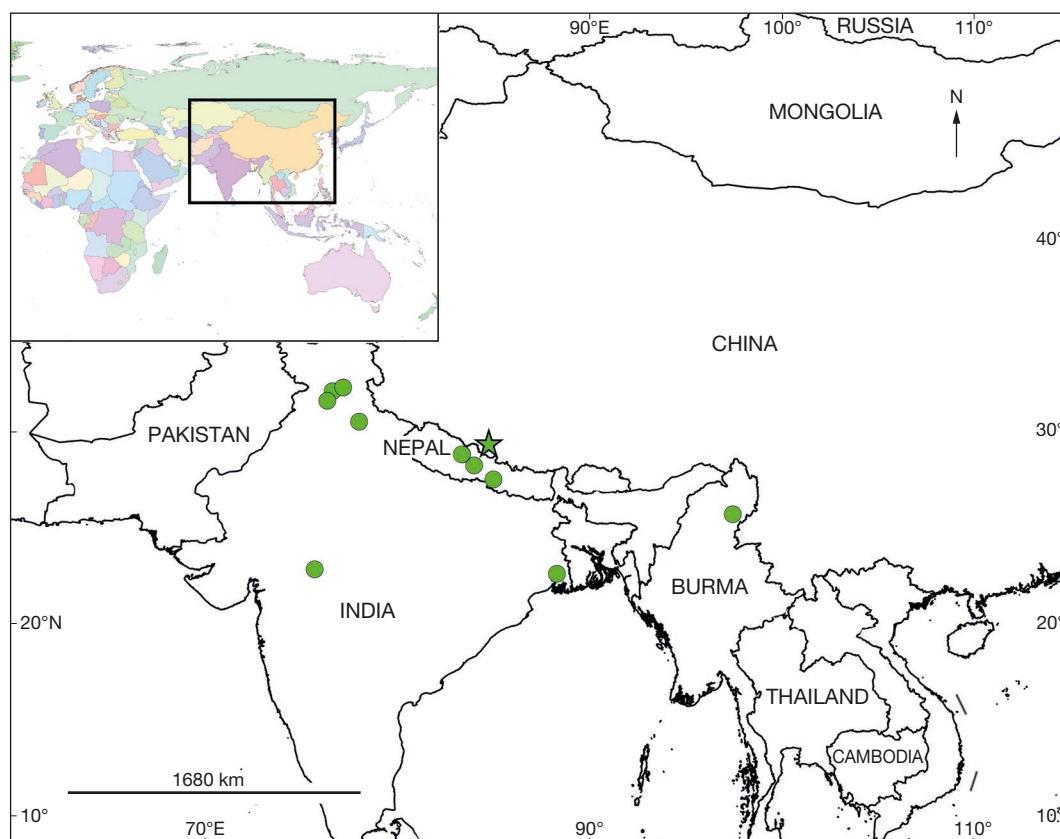


FIG. 2. — Distribution of *Scutellaria repens* Buch.-Ham. ex D. Don.

20.X.1874; *A. Legit* 23625; US[US802873] (photo!) • Himachal Pradesh, Kangra; 20.X.1874; *A. Legit* 23782; US[US802879, US802880] (photo!) • Punjab, Arui Seoraj; 4.XI.1916; *R.E. Cooper* 5979; P[P04158111] (photo!) • Punjab; XI.1879; *J.R. Drummond* 918; P[P04158113] (photo!) • Punjab; 1917; *R.R. Stewart s.n.*; US[US1173668] (photo!) • Uttarakhand, N.W. Himalaya, near Mussourie; *G. King* 1869; US[US0097585] (photo!) • 26.III.1912; *H. Hallier s.n.*; L[L2871346, L2871347, L2871348] (photo!) • Himal Bor. Occ. Regio trop.; *J.J. s.n.*; L[L2871349, L2871350] (photo!), U[U1403349] (photo!).  
**Burma.** Upper Burma, Malahaya hill; 10.III.1893; *Dr. King's Collector* 351; U[U1403348] (photo!).

#### TAXONOMIC NOTES

Morphologically, *Scutellaria repens* is similar with *S. scandens* by having scandent stems and axillary racemes (Paton 1990), but the two species are differentiated by nutlets, stems and flowers. *Scutellaria repens* has grey-black, subpapillate, pubescent nutlets, wingless stems, and a parallel-sided corolla tube, while *S. scandens* has brown, papillate, glabrous nutlets, obviously winged stems, and a bent and saccate corolla tube base. Paton *et al.* (2016) indicated that *S. shweliensis* W. W. Sm. and *S. tenasserimensis* A. J. Paton are closely related to *S. repens* rather than *S. scandens*. Morphologically, all the former three species have subpapillate, pubescent nutlets and parallel-sided corolla, but can be distinguished by other characters.

#### Genus *Dracocephalum* L.

*Dracocephalum baldshuanicum* (Gontsch.) A.L. Budantzev (Figs 3; 4)

*Botanicheskii Zhurnal* (Moscow & Leningrad) 78 (2): 111 (Budantsev 1993).

*Lallemantia baldshuanica* Gontsch., *Trudy Tadzhikestansk. Bazy* 2: 184 (Gontscharov 1936).

LECTOTYPE (here designated). — **Tajikistan** • Tut-Kaul, Baldschuan region; 8.V.1906; *G.G. Morren* 446; lecto-, LE[LE00053902] photo!, isolecto-, LE[LE00053901, LE00053903, LE00053904] photo!).

PHENOLOGY. — Flowering occurs from April to June and fruiting from May to July.

DISTRIBUTION AND HABITAT. — Iran, Afghanistan, Kyrgyzstan, Tajikistan, Turkmenistan and Uzbekistan; new record for Uzbekistan, occurring in Babatagh. It grows on soft slopes from the foothills to middle elevations of mountains between 900 to 1300 m. In the ephemeral vegetation belt, this species is part of groupings that include the forb-grass ephemeral formation with perennials and, less frequently of the *Aegilops* ephemeral formation.

ETYMOLOGY. — The specific epithet refers to Baldschuan in Tajikistan, where the species was found.

COMMON NAME. — Baldjuan lallemantiyasi (Uzbek name).





FIG. 3. — *Dracocephalum baldshuanicum* (Gontsch.) A.L.Budantzev: **A**, habit; **B**, inflorescence; **C**, leaves. Photographed by O. T. Turginov.

ADDITIONAL SPECIMENS EXAMINED. — **Uzbekistan** • Surkhandarya region, Mountain Babatag, Kuruksay, surroundings of the village of Tomchisay; 13.IV.2022; *S.O. Pulatov & O.A. Turdiboyev* BT12, BT13, BT14, BT15, BT16; TASH! • Uzun region, surrounding of the village Jonchekka; 21.IV.2022; *O.A. Turdiboyev & S.O. Pulatov* BT01204221, BT01204222, BT01204223; TASH!

**Tajikistan** • District Kulab, between Kulab and the Tashrabat route near the village of Chimchigly, Alintau Mountain range; 15.V.1910; *D. Divnogorskaja s.n.* • *Locus classicus*, in the mountains near the village of Chargi; 25.V.1910; *D. Divnogorskaja s.n.* • *Loc. cit.*, river Yakhsu near Kulab; 30.IV.1906; *R. Roschewitz s.n.* • In the mountains of Imam-Maskara to the east of Kulab; alt. 2130–2430 m; VI.1883; *A.*

*Regel s.n.* • Between Kulab and Baldshuan; 30.VI.1906; *R. Roschewitz s.n.* • Baldshuan; alt. 920 m; VI.1883; *A. Regel s.n.* • *Loc. cit.*, in the clayey hills; 27.V.1897; *S. Korshinsky s.n.* • District Baldshuan, in the Valley of Dangere; V.1884; *A. Regel s.n.* • In the mountains of Jilantau between Baldshuan and Kangurt; 26.V.1913; *A. Michelson s.n.* • On the eastern slopes of the Sarsarjak mountains near the village Margak; 9.VII.1932; *N. Gontscharov, G. Grigorjev, V. Nikitin s.n.* • In the valley of the river Vakhsh at the mouth of the narrows of Kuli-Safion near the village Shurguzar; 4.V.1913; *A. Michelson s.n.* • Saripul in the river Aksu; VI.1884; *A. Regel s.n.* • Umar, in the mountains of Babatag; 18.V.1906; *G. Morren s.n.* • Saray to the river Panj; III–IV.1884; *A. Regel s.n.* • Jomut on the western slopes of the Gazy-Mailik mountains

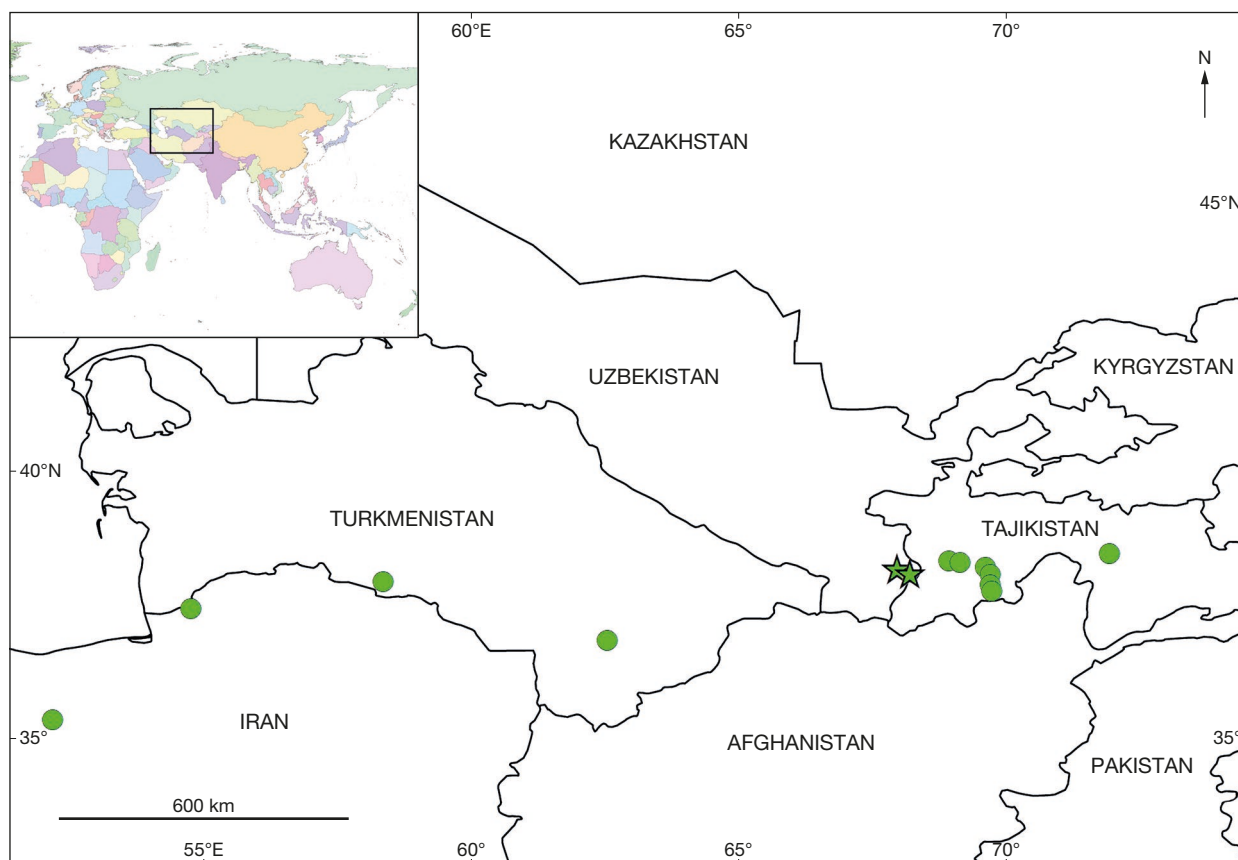


FIG. 4. — Distribution of *Dracocephalum baldshuanicum* (Gontsch.) A.L. Budantzev.

between the rivers Vakhsh and Kafirnigan; alt. *c.* 920 m; 13-25.V.1883; *A. Regel s.n.* • Hissar, in the mountains of Tashbulak; alt. 1520-1825 m; 21.IV.1883; *A. Regel s.n.* • Between Dushanbe and Warzob at the river Sigdy in the Hissar mountains; alt. *c.* 920-1216 m; 22.VII-3.IX.1884; *A. Regel s.n.* (all herbarium specimens stored in LE).

**Iran** • Gorgan, 8 km east of Aitmar, south of Hootan; alt. 230 m; *Hiver 3719*; TEHRAN.

NOTE

When describing this species, Gontscharov (1936) indicated that type specimens were collected from “Montes Transoxanae. Tut-Kaul ad fl. Vachsch., 8 May 1906, (446) (Leg. G.G. Morren)”, but Gorschkova (1954) thought that this species was “Described from Tut-Kaul, at the river Vakhsh” and mentioned that types specimens were deposited in LE”. In this study, we have found four type specimens of *D. baldshuanicum* from LE. Having studied all the materials available to us in more detail, we concluded that the lectotype is stored in LE. Therefore, the lectotypification of *D. baldshuanicum* is proposed in conformance with Art. 9.3 of International Code of Nomenclature for algae, fungi, and plants (Turland *et al.* 2018).

TAXONOMIC NOTES

*Dracocephalum baldshuanicum* is morphologically similar to *D. royleanum* Benth., but can be readily distinguished by the corolla tube protruding from the calyx and its larger limb.

Genus *Lamium* L.

*Lamium purpureum* L.  
(Figs 5; 6)

*Species Plantarum* 2: 579 (Linnaeus 1753).

LECTOTYPE. — Herb. Linn. No. 733.11 (LINN).

PHENOLOGY. — Flowering from March to October, fruiting from May to October.

DISTRIBUTION AND HABITAT. — Native to Eurasia, naturalized throughout northern and southern America; disturbed, fertile soils, usually in full or partial sun. Occurs throughout Uzbekistan.

ETYMOLOGY. — The epithet and common name refer to the purple tint of the upper leaves.

COMMON NAME. — Gulobi lamium (Uzbek name).

ADDITIONAL SPECIMENS EXAMINED. — **Uzbekistan** • Namangan region Turakurgan district, near city Turakurgan; 2.IV.2022; *K. Sh. Tojibaev s.n.*; TASH[TASH109423]! • Tashkent city, Yunusabad district, near market Uch Kakhramon; 22.III.2023; *O. T. Turginov* 15; TASH[TASH109422]!

**Germany** • Zschon [Zschoner] Grund; IX.1949; *T.K. Möbius s.n.*; DR[DR069208]! • Sachsen, Dresden, Gartensparte; 3.V.2019; *A. Lautenschläger* 2; DR[DR067780]!

**Italy** • Giardino in loc. Bertacca, Massarosa (LUCCA); 17.III.1982; *A. Lunardini s.n.*; (PI[PI009143]!); Region of Toscana, Prov. Siena,



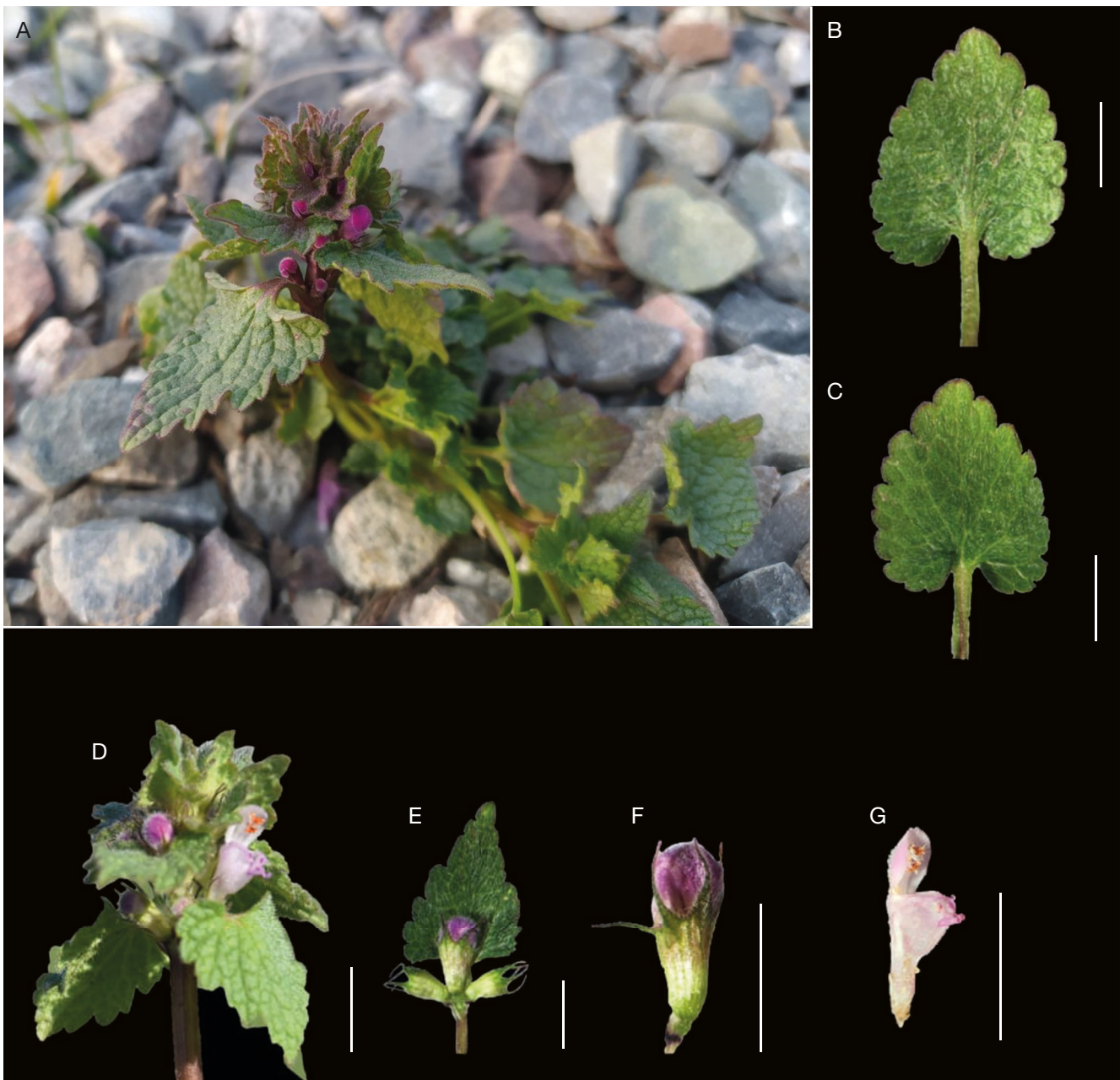


FIG. 5. — *Lamium purpureum* L.: A, plant; B, C, leaves; D, inflorescence; E, verticillaster; F, G, flowers. Scale bar: 1 cm. Photographed by O. T. Turginov.

north of Montepulciano, south of Podere Pietrose, little north of Il Granaio; *W. Till* 130016; WU[WU0069675]!

**Russia** • Yakutia, City Olekminsk, hill near the city; 16.VII.1947; *M. Karavayev* s.n.; MW[MW0129807] (photo!) • Mordovia, Mordovian State Reserve named after P.G. Smidovich, surrounding of the village Pushta; 9.IX.1996; *L. V. Teryoshkina*; GMU (photo!) • Vologod region, Kirillovsky district, surroundings of the village Ferapontovo; 28.VI.1998; *N. Shvedchikova* s.n.; MW[MW0490795] (photo!).

#### TAXONOMIC NOTES

It is often found alongside *Lamium amplexicaule* L., which is easily mistaken for it since they have similar-looking leaves and similar bright purple flowers. Morphologically,

they are easily distinguished from each other in that *L. purpureum* L. has stalked leaves on the flower stem (vs. without stalked leaves in *L. amplexicaule* L.) (Parnell & Curtis 2012).

#### DISCUSSION

In this study, one species of Lamiaceae (*Scutellaria repens*) is reported for the first time from China, and two additional mint species (*Dracocephalum baldshuanicum*, *Lamium purpureum*) are reported for the first time from Uzbekistan,

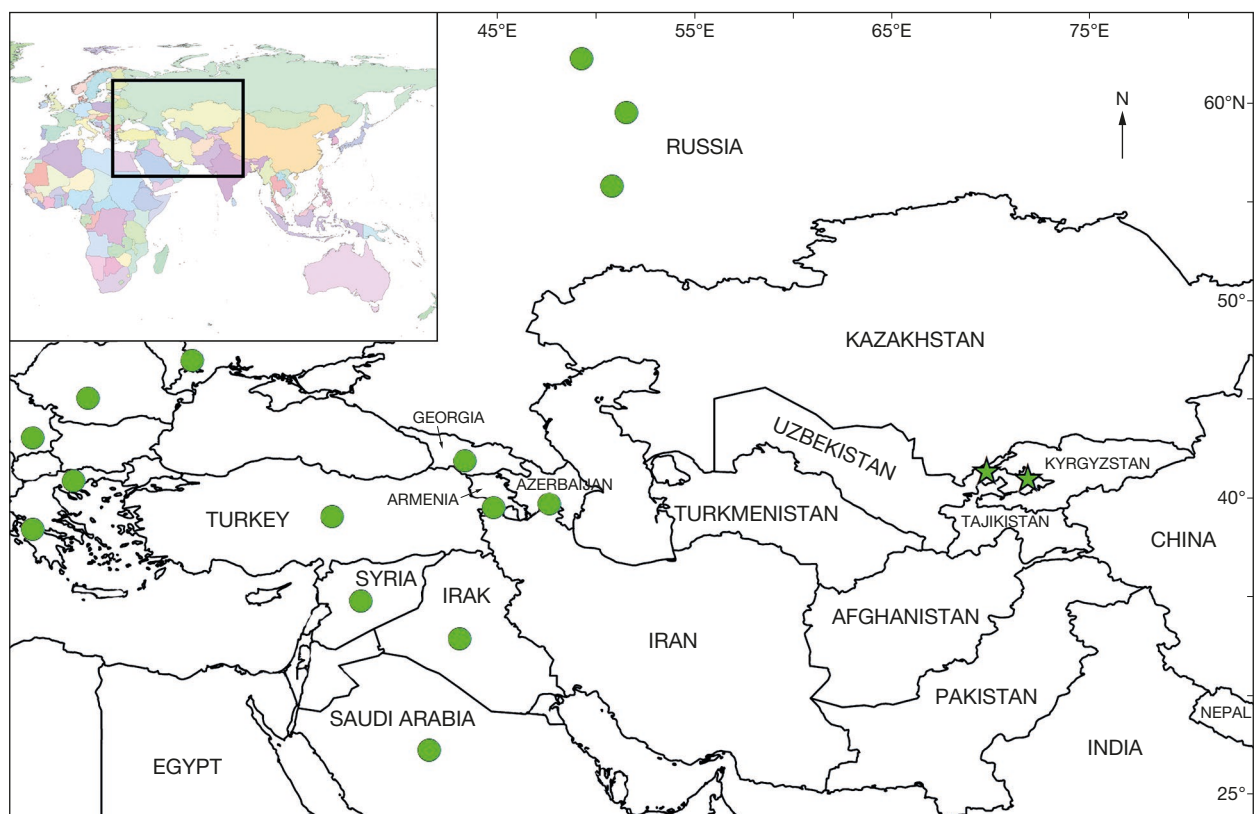


FIG. 6. — Distribution of *Lamium purpureum* L.

respectively. *Scutellaria repens* is distributed sporadically in the Himalaya region of India, Myanmar, Nepal, and Pakistan. It is not surprising that we found it occurring in Gyirong County, Xizang, China since the locality is near the border between China and Nepal. The climatic conditions, environmental factors and habitat types are similar in these areas. Similarly, *Dracocephalum baldshuanicum* is distributed sporadically in Iran, Turkmenistan, and Tajikistan (Fig. 4) and, only a few collections are known from those countries. Here, we reported *D. baldshuanicum* from Uzbekistan for the first time, from the Babatag region of southern Uzbekistan, close to the border with Uzbekistan. Additional collections may help clarify our understanding of the distribution area of these two species. *Lamium purpureum* was found from Uzbekistan but this is perhaps not surprising because it has a wide distribution elsewhere in Eurasia. In Uzbekistan, *L. purpureum* is generally found with *L. amplexicaule*. Morphologically, both species have similar-looking leaves and purple flowers and can easily be confused. This is likely part of reason that *L. purpureum* was not reported from Uzbekistan before.

The mountains of Central Asia and Southwest China are considered to be biodiversity hotspots (Myers *et al.* 2000), but the flora of these regions has not been well studied (Li *et al.* 2020). Recently however, many new species and

new records have been reported from the region (Tojibaev *et al.* 2014; Sun *et al.* 2022). The aforementioned findings indicate that more intensive field collections are necessary, especially international joint field trips that focus on border regions. These collaborative endeavors will contribute to important plant diversity discoveries in future.

#### Acknowledgements

We are grateful to Dr Hamid Nazari (Department of Biology, Faculty of Sciences, Bu-Ali Sina University, Iran) for help with the identification, Dr Bryan Drew (University of Nebraska at Kearney) for reviewing the manuscript. We would like to thank the curators of K, KUN, LE, MW, PE, and TASH for specimen access. This study was funded by the Natural Science Foundation of Yunnan Province (202001AS070016), the National Natural Science Foundation of China (No. 31872648), the “Survey of Wildlife Resources in Key Areas of Tibet (ZL202203601), and the project of “Grid mapping of the flora of Uzbekistan” (for 2021-2025), the “Taxonomic revision of polymorphic plant families of the flora of Uzbekistan” (FZ-20200929321) and Features of the formation of urban flora in different personal natural-climatic and anthropogenic conditions (on the example of Belarus and Uzbekistan) (MRB-2021-529).



## REFERENCES

- BUDANTSEV A. L. 1993. — A synopsis of the tribe Nepeteae (Lamiaceae). The genera *Lophanthus*, *Dracocephalum*, *Cedronella*, *Schizonepeta* and *Agastache*. *Botanicheskii Zhurnal* 78: 106-115.
- CELEP F., KARAER F., DREW B. T. 2022. — *Lamium cappadocicum*, a new species from Central Anatolia, Turkey: evidence from molecular and morphological studies. *Turkish Journal of Botany* 46: 614-623. <https://doi.org/10.55730/1300-008X.2736>
- CHEN Y. P., LI B., OLMSTEAD R. G., CANTINO P. D., LIU E. D. & XIANG C. L. 2014. — Phylogenetic placement of the enigmatic genus *Holocheila* (Lamiaceae) inferred from plastid DNA sequences. *Taxon* 63: 355-366. <https://doi.org/10.12705/632.8>
- CHEN Y. P., ZHU X. X., ZHAO F., FENG H. Z., PATON A., XIANG C. L. 2019a. — Molecular and morphological evidence for a new species of *Siphocranion* (Lamiaceae) from the Sino-Vietnamese border. *Phytotaxa* 425: 1-18. <https://doi.org/10.11646/phytotaxa.425.1.1>
- CHEN Y. P., WILSON T. C., ZHOU Y. D., WANG Z. H., LIU E. D., PENG H. & XIANG C. L. 2019b. — *Isodon hsiwenii* (Lamiaceae: Nepetoideae), a new species from Yunnan, China. *Systematic Botany* 44: 913-922. <https://doi.org/10.1600/036364419X15710776741486>
- CHEN Y. P., PATON A. J. & XIANG C. L. 2020. — *Hanceola suffruticosa* (Lamiaceae, Nepetoideae), a new species from the Sino-Vietnamese border. *PhytoKeys* 145: 131-138. <https://doi.org/10.3897/phytok-ey.145.49995>
- CHEN Y. P., CHEN Y. S., XIANG C. L. 2021. — *Dracocephalum microphyton* (Lamiaceae: Nepetoideae), a new species from southwest China. *Kew Bulletin* 76: 287-292. <https://doi.org/10.1007/s12225-021-09933-8>
- CHEN Y. P., TURDIMATOVICH T. O., NURALIEV M. S., LAZAREVI P., DREW B. T. & XIANG C. L. 2022. — Phylogeny and biogeography of the northern temperate genus *Dracocephalum* s.l. (Lamiaceae). *Cladistics* 38: 429-451. <https://doi.org/10.1111/CLA.12502>
- DON D., HAMILTON F. & WALLICH N. 1825. — *Prodromus florum Nepalesis*. J. Gale, Londini, 256 p. <https://doi.org/10.5962/bhl.title.86>
- GONTSCHAROV N. F. 1936. — New Scrophulariaceae and Labiatae of Tajikistan. *Proceedings of the Tajik base. Botany* 2: 179-190 [in Russian].
- GORSCHKOVA S. G. 1954. — *Lallemantia* Fisch. et Mey., in SHISHKIN B. K. (ed.), *Flora of the U.S.S.R.*. Vol. 20. Izdatel'stvo Akademii Nauk SSR, Moscow: 482-488.
- HARLEY R. M., ATKINS S., BUDANTSEV A. L., CANTINO P. D., CONN B. J., GRAYER R., HARLEY M. M., KOK DE R., KRESTOVSKAJA T., MORALES R., PATON A. J., RYDING O. & UPSON T. 2004. — Labiatae, in KADEREIT J. W. (ed.), *The Families and Genera of Vascular Plants*. Vol. 7. Springer Verlag, Berlin: 167-275.
- LI H. W. 1977. — *Scutellaria* L., in WU C. Y. & LI H. W. (eds), *Flora Reipublicae Popularis Sinicae*. Vol. 65. Science Press, Beijing: 124-248.
- LI H. W. & HEDGE I. 1994. — *Scutellaria* L., in WU C. Y. & RAVEN P. H. (eds), *Flora of China*. Vol. 17. Science Press, Beijing & Missouri Botanical Garden Press, St. Louis: 75-103.
- LINNAEUS C. 1753. — *Species Plantarum*. *Salvius*, Stockholm: 579-598. <https://doi.org/10.5962/bhl.title.37656>
- OLMSTEAD R. G. 2021. — A synoptical classification of the Lamiales, version 2.8.0 [retrieved from <http://davetank.github.io/research/Lamiales%20class%20n.v.2.8.0.pdf> on 5 April 2021].
- PARNELL J. & CURTIS T. 2012. — *Webb's An Irish Flora*. Cork University Press, Cork, 556 p.
- PATON A. 1990. — A global taxonomic investigation of *Scutellaria* (Labiatae). *Kew Bulletin* 45 (3): 99-450. <https://doi.org/10.2307/4110512>
- PATON A., SUDDEE S. & BONGCHEEWIN B. 2016. — Two new species of *Scutellaria* (Lamiaceae) from Thailand and Burma. *Kew Bulletin* 71: 1-6. <https://doi.org/10.1007/s12225-016-9620-2>
- SUN Z. P., ZHAO Y., BONGCHEEWIN B., KIM S., GUO G., FUNAMOTO T., WANG H. C. & XIANG C. L. 2022. — Systematic placement of *Elsholtzia griffithii* (Nepetoideae, Lamiaceae), a new record from China. *Phytotaxa* 548: 39-50. <https://doi.org/10.11646/phytotaxa.548.1.3>
- LI W., TOJIBAEV K. SH., HISORIEVE H., SHOMURODOV K. F., LUO M., FENG Y. & MA K. 2020. — Mapping Asia Plants: currently status of floristic information for central Asian flora. *Global Ecology and Conservation* 24: e01220. <https://doi.org/10.1016/j.gecco.2020.e01220>
- MYERS N., MITTERMELER R. A., MITTERMELER C. G., DA FONSECA G. A. B. & KENT J. 2000. — Biodiversity hotspots for conservation priorities. *Nature* 403: 853-858. <https://doi.org/10.1038/35002501>
- THIERS B. (continuously updated) — *Index Herbariorum: a Global Directory of Public Herbaria and Associated Staff*. New York Botanical Garden's Virtual Herbarium, 2023 [retrieved from <http://sweetgum.nybg.org/ih/> on 13 April 2023].
- TOJIBAEV K., BESHOKO N., TURGINOV O. & MIRZALIEVA D. 2014. — New records for Fabaceae in the flora of Uzbekistan. *Flora Mediterranea* 24: 25-35.
- TURLAND N. J., WIERSEMA J. H., BARRIE F. R., GREUTER W., HAWKSWORTH D. L., HERENDEEN P. S., KNAPP S., KUSBER W. H., LI D. Z., MARHOLD K., MAY T. W., MCNEILL J., MONRO A. M., PRADO J., PRICE M. J. & SMITH G. F. (eds) 2018. — International Code of Nomenclature for algae, fungi, and plants (Shenzhen Code) adopted by the Nineteenth International Botanical Congress Shenzhen, China, July 2017. *Regnum Vegetabile* 159. Koeltz Botanical Books, Glashütten, 254 p.
- WFO 2023. — *Scutellaria* L. [retrieved from <http://www.worldfloraonline.org/taxon/wfo-4000034856> on 9 March 2023].
- WU C. Y. & WANG W. T. 1977. — *Dracocephalum* L., in WU C. Y., LI H. W. (eds), *Flora Reipublicae Popularis Sinicae*. Vol. 65. Science Press, Beijing: 346-384.
- XIANG C. L., ZHANG Q., SCHEEN A.-C., CANTINO P. D., FUNAMOTO T. & PENG H. 2013. — Molecular phylogenetics of *Chelonopsis* (Lamiaceae: Gomphostemmatae) as inferred from nuclear and plastid DNA and morphology. *Taxon* 62: 375-386. <https://doi.org/10.12705/622.11>
- ZHAO F., LIU E. D., PENG H., & XIANG C. L. 2017. — A new species of *Scutellaria* (Scutellarioideae, Lamiaceae) from Sichuan Province in southwest China. *PeerJ* 5: e3624. <https://doi.org/10.7717/peerj.3624>
- ZHAO F., CHEN Y. P., SALMAKI Y., DREW B. T., WILSON T. C., SCHEEN A. C., CELEP F., BRÄUCHLER C., BENDIKSBY M., WANG Q., MIN D. Z., PENG H., OLMSTEAD R. G. & XIANG C. L. 2021a. — An updated tribal classification of Lamiaceae based on plastome phylogenomics. *BMC Biology* 19: 2. <https://doi.org/10.1186/s12915-020-00931-z>
- ZHAO F., WU Y. W., DREW B. T., YAO G., CHEN Y. P., CAI J., LIU E. D., LI B. & XIANG C. L. 2021b. — Systematic placement of the enigmatic Southeast Asian genus *Paralamium* and an updated phylogeny of Tribe Pogostemoneae (Lamiaceae Subfamily Lamioideae). *Frontiers in Plant Science* 12: 646133. <https://doi.org/10.3389/fpls.2021.646133>
- ZHAO Y., CHEN Y. P., ZHENG H. L., PENG H. & XIANG C. L. 2021c. — *Phlomooides liangwangshanensis* (Lamiaceae), a new species from Yunnan, China. *Phytotaxa* 491: 72-78. <https://doi.org/10.11646/phytotaxa.491.1.8>
- ZHAO Y., CHI J. C., CHEN Y. P., LIANG C. Z., TURGINOV O. T., PULATOV S. O., RAKHMATOV A. A., AROMOV T. B. & XIANG C. L. 2022. — Three new records of Lamiaceae from China and Uzbekistan. *Phytotaxa* 531: 111-119. <https://doi.org/10.11646/phytotaxa.531.2.3>

Submitted on 17 April 2023;  
accepted on 29 May 2023;  
published on 22 January 2024.